



STOLL

COLOR

IN

KNITTING

Stoll Trend Collection 2023

COLOR IN KNITTING

A celebration of 150 years of
the STOLL Brand

150 years after the foundation of Stoll in 1873, we celebrate this historic event with the present Trend Collection. It draws inspiration from our vast sample archives with a selection of vintage stitch structures that are interpreted with the most recent technology. This approach impressively outlines the continuous technical advancements over the span of 150 years.

Besides, the collection treasures innovative products, including the introduction of the new flat knitting gauge E20, which creates knitwear finer than ever.

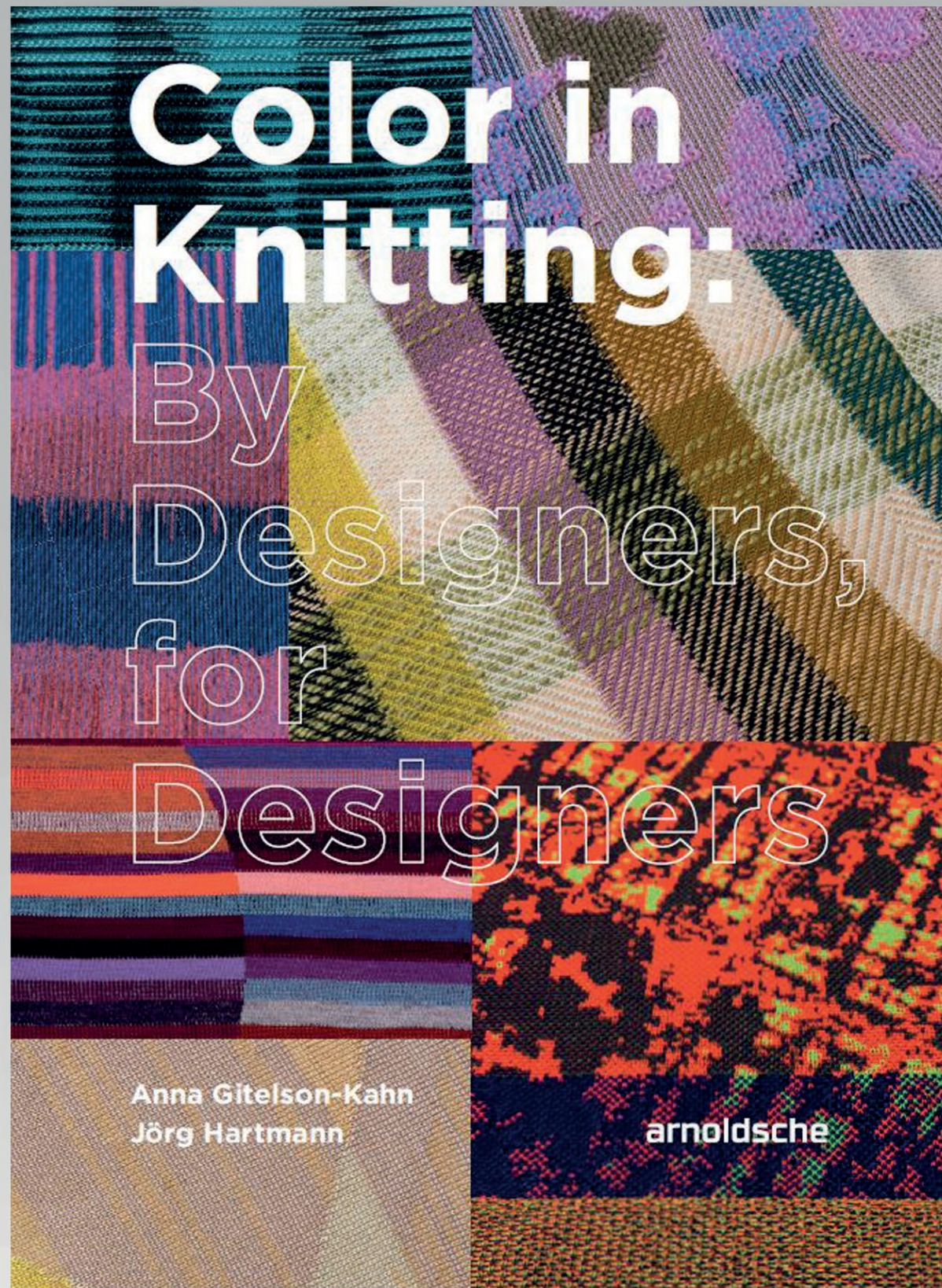
In addition, workflow styles have been incorporated, showcasing how digital software tools can speed up the design process and save precious material taking sustainability into account.

A range of seamless products illustrate the sustainable and resourceful capabilities of our STOLL-knit and wear® technology.

In addition to our collection we are excited to announce the release of our book *Color in Knitting: By Designers, for Designers*. The book features samples and technical background information likewise. This makes it an excellent source for everybody who is curious to learn more about the innovation potential of Stoll technology for product development. Find more information about the book on the next page.

Stoll Book Release

To obtain a copy of this invaluable resource, simply scan the provided QR-Code to purchase the book.





2310001 | Women's Fully Fashion Wide Leg Trousers featuring a stunning structural imitation of crepe de chine/crepe georgette-like textile mixed with plane fine gauge jersey in a geometric artwork. Inverse plating at the sides offers a subtle color hue and silky sheen on the fine merino wool. | ADF 530-32 ki BcW | E 20

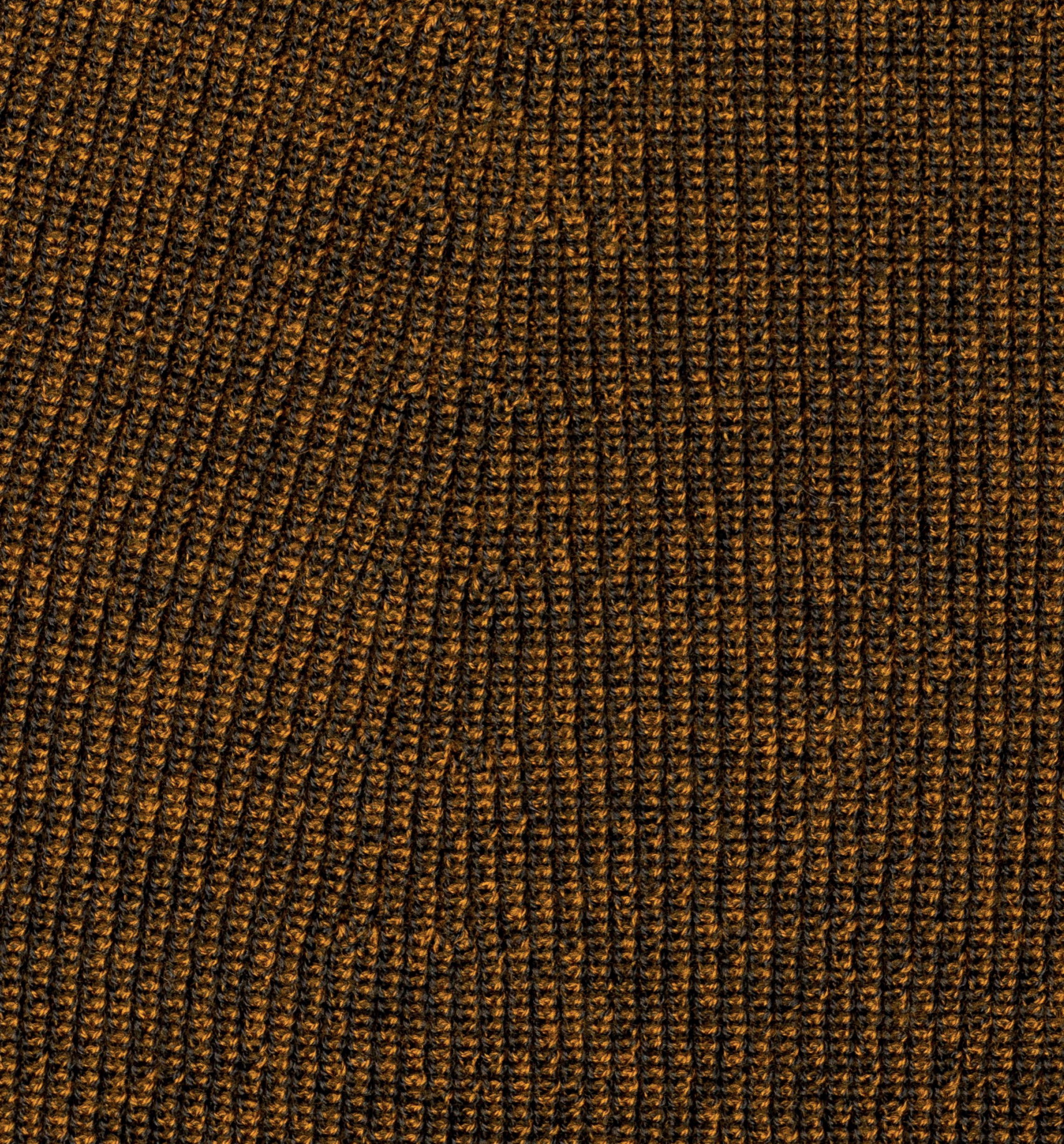


2210023 | Women's Fully Fashion Asymmetrical Draped Top that features precise plating following an artwork to create a structural appealing slub yarn effect. A subtle silky sheen in a geometrical jersey transfer artwork harmonizes with 2310001 Wide Leg Trousers as knitted set. | ADF 530-32 ki BcW multi gauge | E 7.2





2210034 | Stoll-knit and wear® Men's Sweater with plated half cardigan color blend featuring a bold all-over Stoll-ikat-plating® artwork crossing every body part. | ADF 830-24 ki W knit and wear | E 7.2

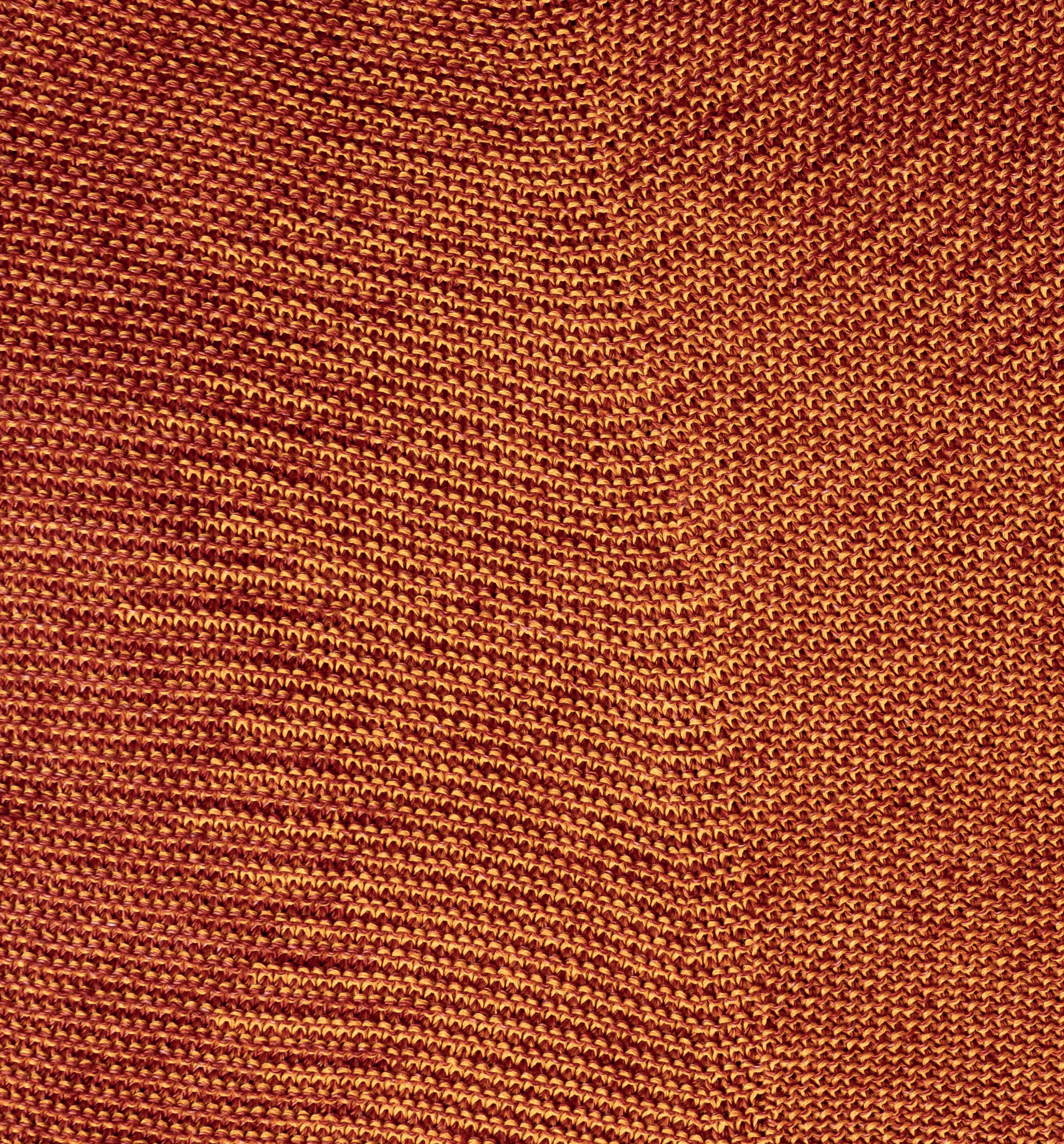


2210029 | Stoll-knit and wear® Men's Sweater with half cardigan in traditional two-color plating technique that results in a beautiful color blend. | ADF 830-24 ki W knit and wear | E 7.2





2310002 | Women's Coarse Gauge Poncho with sophisticated tuck structure using three different yarn gauges to create multifaceted compositions of color and structure. This poncho is knitted jointlessly in 1x1 technique starting with the rib collar. | CMS 520 C+ ki multi gauge | E 1,5.2



2210019 | Stoll-knit and wear® Women's V-Neck Raglan Sweater in Links-Links structure paired with subtle Stoll-ikat-plating® design that appears and dissolves when changing perspective. | ADF 830-24 ki W knit and wear | E 7.2



2310006 + 2310007 | Stoll-knit and wear® Women's V-Neck Sweater and Flared Pants featuring traditional plating color effect and split technique rib design. | ADF 830-24 ki W knit and wear | E 7.2

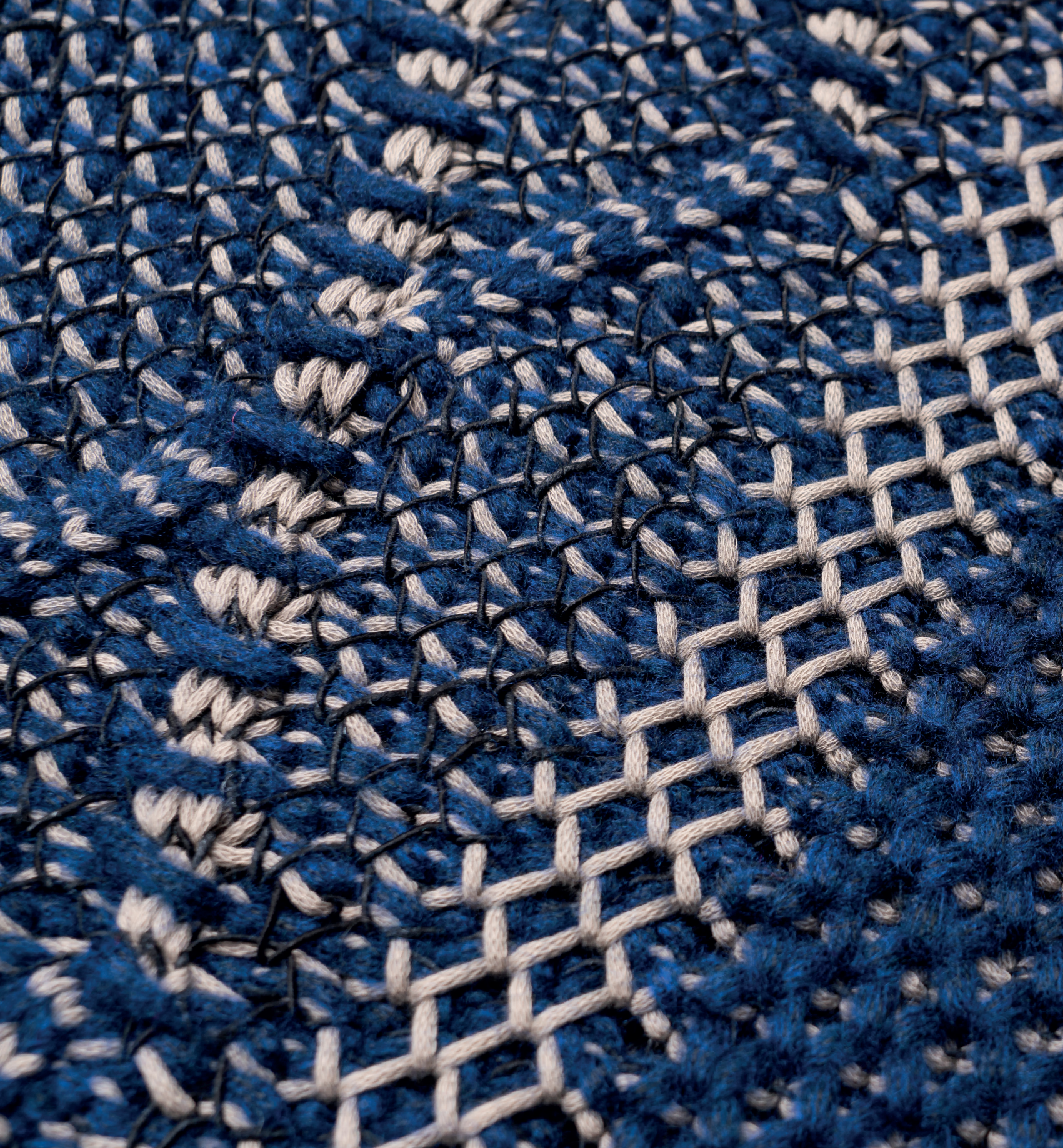


2210026 | Women's Fully Fashion Turtleneck Pullover that examines the perception of color in different sized cross-cable structures. The garment was designed fully digitally with k.innovation CREATE DESIGN and external 3D software before the final knitting program with k.innovation CREATE PLUS was executed. | ADF 530-24 ki multi gauge | E 3,5.2





2210027 | Women's Fully Fashion Long Dress - a stunning cross-cable structured dress that features a traditional plating effect with shiny lurex resulting in subtle color hues. It complements the 2210026 pullover as part of a stylish knitted set. | ADF 530-24 ki multi gauge | E 3,5.2



2310004 | Fully Fashion Men's Fishermen Sweater in coarse gauge featuring an elaborate tuck and aran structure that plays with three different yarn gauges and textures to create multifaceted compositions of color. | CMS 520 C+ ki multi gauge | E 1,5.2





2210039 | Women's Fully Fashion Sweater featuring a deconstructed twill jacquard design that plays with different graphic layers on both face and rear. The garment was designed fully digitally with k.innovation CREATE DESIGN and external 3D software before the final knitting program with k.innovation CREATE PLUS was executed. | ADF 830-24 ki W multi gauge | E 7.2