

MATERIALIZATION

STOLL



MATERIALIZATION

Cover:
See page 32
for details



See page 05
for details

MATERIALIZATION

INTRODUCTION

OVERCOMING THE RESISTANCE OF MATERIAL REPRESENTS THE BIGGEST OBSTACLE IN THE CREATION AND PRODUCTION OF TEXTILES.

THE LATEST STOLL COLLECTION REFLECTS ON THIS CHALLENGE, HIGHLIGHTING HOW VERSATILE STOLL MACHINES HANDLE COMPLICATED MATERIALS OF ALL KINDS.

WHEN WE SPEAK OF MATERIALS IN THE CONTEXT OF KNITTING, WE USUALLY MEAN YARNS – WHICH ARE ENGINEERED TO PERFORM WELL IN THE KNITTING PROCESS. BUT IN FACT, THERE IS A VAST ARRAY OF YARN-LIKE MATERIALS WE NEVER THINK TO USE. WE FOUND INSPIRATION IN RECYCLED PLASTIC BAGS, SILVER FOIL, JUTE BAGS AND OTHER PACKAGING MATERIALS.

THIS COLLECTION WAS ALSO INSPIRED BY AFRICAN FARM WORKERS, WHOSE WORKWEAR IS OFTEN FASHIONED FROM A MIX OF UPCYCLED SECOND-HAND CLOTHES AND FOUND WASTE MATERIALS.

THE RESULTING OUTFITS ARE UNCONVENTIONAL, BUT ALSO HIGHLY FUNCTIONAL, STYLISH AND RICH IN MATERIALS.

WELCOME TO MATERIALIZATION.

Jörg Hartmann / Head of Fashion & Technology



3D VIEWS

Some of the garments in this book are rendered in 3D. Scan the QR code to explore.



STOLL PATTERN SHOP

Scan the QR codes for direct links to the knits in our pattern shop and more details. Or visit patternshop.stoll.com

INTRODUCTION

MATERIALIZATION

Wall carpet, in cracked soil look. Two-colour cross tubular jacquard with additional lurex yarn in STOLL-ikat plating® design creates visual depth. The 3D effect is heightened by the use of thermoplastic and different elastic yarns.

1910052 / Cracked soil wall carpet / ADF 850-24 W knit and wear / E 7.2
STOLL-artwork® / STOLL-ikat plating® / Two-colour cross tubular jacquard



MATERIALIZATION

INTRODUCTION

OVERCOMING THE RESISTANCE OF MATERIAL REPRESENTS THE BIGGEST OBSTACLE IN THE CREATION AND PRODUCTION OF TEXTILES.

THE LATEST STOLL COLLECTION REFLECTS ON THIS CHALLENGE, HIGHLIGHTING HOW VERSATILE STOLL MACHINES HANDLE COMPLICATED MATERIALS OF ALL KINDS.

WHEN WE SPEAK OF MATERIALS IN THE CONTEXT OF KNITTING, WE USUALLY MEAN YARNS – WHICH ARE ENGINEERED TO PERFORM WELL IN THE KNITTING PROCESS. BUT IN FACT, THERE IS A VAST ARRAY OF YARN-LIKE MATERIALS WE NEVER THINK TO USE. WE FOUND INSPIRATION IN RECYCLED PLASTIC BAGS, SILVER FOIL, JUTE BAGS AND OTHER PACKAGING MATERIALS.

THIS COLLECTION WAS ALSO INSPIRED BY AFRICAN FARM WORKERS, WHOSE WORKWEAR IS OFTEN FASHIONED FROM A MIX OF UPCYCLED SECOND-HAND CLOTHES AND FOUND WASTE MATERIALS.

THE RESULTING OUTFITS ARE UNCONVENTIONAL, BUT ALSO HIGHLY FUNCTIONAL, STYLISH AND RICH IN MATERIALS.

WELCOME TO MATERIALIZATION.

Jörg Hartmann / Head of Fashion & Technology

INTRODUCTION
MATERIALIZATION



1810087 / Draped skirt / ADF 550-52 BW multi gauge / E 7.2
STOLL-artwork® / STOLL-weave-in® / STOLL-ikat plating® / Fully Fashion /
Gore technique / Presser foot with U-groove / PTS/NPJ

Foil-inspired draped skirt. The combination of see-through polypropylene weft yarn and various tuck structures evoke shiny sequins. Selective areas show additional weft insertion. A STOLL-ikat plating® graphic on the inner layer shows through.



Lightweight Fully Fashion oversized cardigan, in double-face knitted fabric. The outer face has an open felted look, using coarse wool yarn as weft insertion. The softness of the inner layer is achieved using fine gauge plated cotton. The shape is influenced using alternating tuck structures and visible goring marks in specific areas.

1810116 / Oversized cardigan / ADF 530-52 W multi gauge / E 7.2
STOLL-artwork® / STOLL-weave-in® / Fully Fashion / Gore technique /
Presser foot with U-groove / PTS/NPJ



Fully Fashion neckerchief, with shiny foil tape weave-in, that can be worn as statement jewellery. An organic design is created using tuck transfer structure. The random plated and striped single jersey mirrors the reflections of light on the foil surface.

1910024 / Neckerchief jewel / CMS ADF 52 BW multi gauge / E 7.2
STOLL-artwork® / STOLL-weave-in® / STOLL-ikat plating® / Fully Fashion /
Gore technique / Tuck transfer / PTS/NPJ



1810097 / Mock skirt and mini cape / CMS ADF 32 BW multi gauge / E 7.2
STOLL-artwork® / STOLL-weave-in® / STOLL-ikat plating® / Pointelle net structure /
Presser foot with U-groove



Mock skirt in STOLL-weave-in® structure, that can be worn either as a short cape or miniskirt. The ultra-light-weight knitted fabric has an unusual touch and drape. The thermoplastically-molded waistband forms natural pleats. Subtle colour shading, with STOLL-ikat plating® graphic.



See previous page for details



Fully Fashion asymmetrical draped shirt, knitted in finest gauge. Linen intarsia design. The triangular shape is realized in traversal direction. When dressed, one half is folded upside down. Float-jacquard design on one shoulder yoke.

1910018 / Draped shirt / CMS 850 HP knit and wear / E 9.2
STOLL-artwork® / STOLL-flexible gauge® / Fully Fashion / Intarsia / Float jacquard



Fully Fashion
boxy flower shirt,
with watercolour-
like artwork
on back body:
A two-colour
striped STOLL-
ikat plating®, a
STOLL-weave-in®
graphic and
selective plush
areas merge to
create a flower.
The woven and
plush sections
create a 3D
structure.

1810119 / Flower shirt / ADF 550-52 BW / E 18m.16
STOLL-artwork® / STOLL-weave-in® / STOLL-ikat plating® / Fully Fashion /
Striped jersey / Plush / Gore technique / Presser foot with U-groove



STOLL-knit and wear® balaclava in half cardigan, with selective STOLL-weave-in®. Foldover panel created with gorings. All-over random colour plating and functional plating in the neck.

1910035 / STOLL-knit and wear® balaclava / CMS 350 HP W TT sport / E 7.2
STOLL-weave-in® / STOLL-knit and wear® / Presser foot with U-groove / Gore technique



Reversible Fully Fashion workwear jacket in two-colour STOLL-weave-in® design, to imitate used denim. A fading STOLL-ikat plating® graphic on the selvages give a washed-out look. Both pocket layers and elbow patches are seamlessly attached in 1x1 technique and feature STOLL-weave-in®. Denim detailing: long floats for seam stitches, selectively placed fringe yarn for rough buttonholes and edges.

1810104 / Reversible denim workwear jacket / ADF 530-32 BW multi gauge / E 7.2
STOLL-artwork® / STOLL-weave-in® / STOLL-ikat plating® / STOLL-multi gauge® /
STOLL-applications® / Fully Fashion / Presser foot with U-groove / PTS/NP



Ultra-lightweight flexible mocassins, knitted in one piece. Different materials are used to improve comfort for specific functions: silicone and lightweight filler yarn for the sole (for cushioning and grip), leather-like thermoplastic yarns (for tenacity), polyester and wool (for breathability).



1810090 / Mocassins / ADF 550-52 BW / E 18m.16
STOLL-weave-in® / Fully Fashion / Plating / Core technique / Selective plating



Deconstructed intarsia argyle slipover. Seams move asymmetrically from the sides to the front and back body. The classic argyle design in various materials dissolves into random rhomboid shapes. One body part knits in full production, the other shows smaller argyle distances.

1910007 / Deconstructed argyle slipover / ADF 550-52 BW multi gauge / E 7.2
Fully Fashion / Intarsia / PTS/NPJ



Survival hood, with active heating and lighting for dark and cold conditions. The one-piece panel features knitted-in conductive yarn, with full automation. Extra parts, such as magnetic snaps, are partly knitted-in. Separate 3D-printed LED devices can be attached when needed, to help the wearer see and be seen.

1710045 / Survival hood / ADF 850-24 W / E 18m.16
STOLL-weave-in® / Fully Fashion / Inverse plating / Two-colour cross tubular jacquard /
Gore technique / Presser foot with U-groove / PTS/NPJ



23



STOLL-knit and wear® sweater, in colour-blocking design. The placement of colours show knit and wear specifications, whereas the colour change in the body is plated. The weft insertion on one sleeve seamlessly crosses over narrowings into the shoulder area.

1810085 / STOLL-knit and wear® sweater / ADF 850-24 W knit and wear / E 7.2
STOLL-weave-in® / STOLL-knit and wear® / Intarsia plating / Presser foot with U-groove / PTS/NPJ





Draped kimono blouse knitted in traversal direction. Sectional weft insertion with embroidered look. This effect is achieved using different materials in both tuck and weft yarns in a stripy design. A STOLL-ikat plating® graphic on the back body emphasizes the rugged design.

1810088 / Draped blouse / CMS ADF 52 W multi gauge / E.7.2
STOLL-artwork® / STOLL-weave-in® / STOLL-ikat plating® / Fully Fashion /
Gore technique / Intarsia plating



Fully Fashion basket bag, with knitted-on straps and closure. The shape is entirely knitted upside down, finishing in a woven Fair Isle technique for a rounded bottom. The basket itself features a STOLL-weave-in® 3D tuck structure made of reinforced linen. Woven coarse felted wool and polyamide contrast with each other.

1810117 / Basket bag / ADF 530-52 BW multi gauge / E 7.2
STOLL-weave-in® / STOLL-flexible gauge® / Fully Fashion / Presser foot with U-groove / PTS/NPJ



Fully Fashion,
coarse-gauge
beanie. The stripy
float jacquard
showcases
multi-coloured
and fringed yarns.

1810123 / Beanie / CMS 520 C+ multi gauge / E 1,5,2
Fully Fashion / Two-colour float jacquard / 1x1 technique / Fair Isle



30



Fine dust mask
in 3D origami
design. Each
intarsia area is
molded with
melting yarn.
The single jersey
lycra areas are
breathable.
A knitted-in
metal plate can
be adjusted to
the bridge of
the nose. The
highly elastic
straps feature a
plated adhesion
area made from
silicone yarn.

1810065 / Fine dust mask / CMS ADF 530-32 BW / E 18m.16
Fully Fashion / Intarsia plating / Bind off / Gore technique



STOLL-knit and wear® waistcoat, with gored hood that can be draped like a flounce collar. The shape is created with asymmetrical narrowings and ends in two straps which can be used as a belt. Partially transferred tuck structure on the back body, in a flower design.



31

32



1810120 / STOLL-knit and wear® waistcoat / CMS 830 HP knit and wear / E 7.2
STOLL-artwork® / STOLL-knit and wear® / Tuck stitch structure / Gore technique



Single jersey tote bag, with multiple weft insertions and STOLL-ikat plating® graphic in a geometrical lattice design. Melting yarn reinforcement. The 1910022 rope-like belt can be attached with press buttons, as a strap.

1910027 / Tote bag / CMS ADF 32 BW multi gauge / E 7.2
STOLL-weave-in® / STOLL-ikat plating® / Inverse plating



33

Rope-like belt in twill STOLL-weave-in® design, knitted with thermo-plastic polyurethane yarn for leather-like grip. The length is adjustable, with four press buttons. An additional fringe weft-insertion can be used to tie it up.

1910022 / Rope belt / CMS ADF 32 BW multi gauge / E 7.2
STOLL-weave-in® / STOLL-ikat plating® / Pointelle net structure / Presser foot with U-groove



Thermoplastic molded belt, in STOLL-weave-in® mesh structure. Horizontal stripes in various weft and knit materials, with a subtle STOLL-ikat plating® design. The cotton weave-in yarn creates fringes and can be used as a rope tie.

1810095 / Belt / CMS ADF 52 BW multi gauge / E 7.2
STOLL-artwork® / STOLL-weave-in® / STOLL-ikat plating® / Pointelle net structure /
Presser foot with U-groove



See next page
for details



Deconstructed skirt in intarsia patchwork design, knitted in one piece. The different intarsia areas feature various fringing weft materials, a destroyed tuck structure design and STOLL-ikat plating® gradients. In some areas, weft yarns transition from one intarsia panel to the next, joining them together.

1810124 / Deconstructed skirt / ADF 530-32 W multi gauge / E 7.2
STOLL-artwork® / STOLL-weave-in® / STOLL-ikat plating® / Fully Fashion /
Plated intarsia / Presser foot with U-groove / PTS/NPJ



37

38



Fully Fashion pullover in multi-coloured tuck structure, that looks like braids of polypropylene foil, printed wool, mohair, polyamide non-woven and suede tape yarn. Selectively plated patches on the front as well as a felted shoulder yoke give the pullover a patchwork look.

1810118 / Patchwork pullover / CMS ADF 16 multi gauge / E 3.5.2
Fully Fashion / Tuck stitch structure / Selective plating / Two-colour float jacquard /
Gore technique / PTS / NPJ



See previous
page for details





Tote bag / see page 28

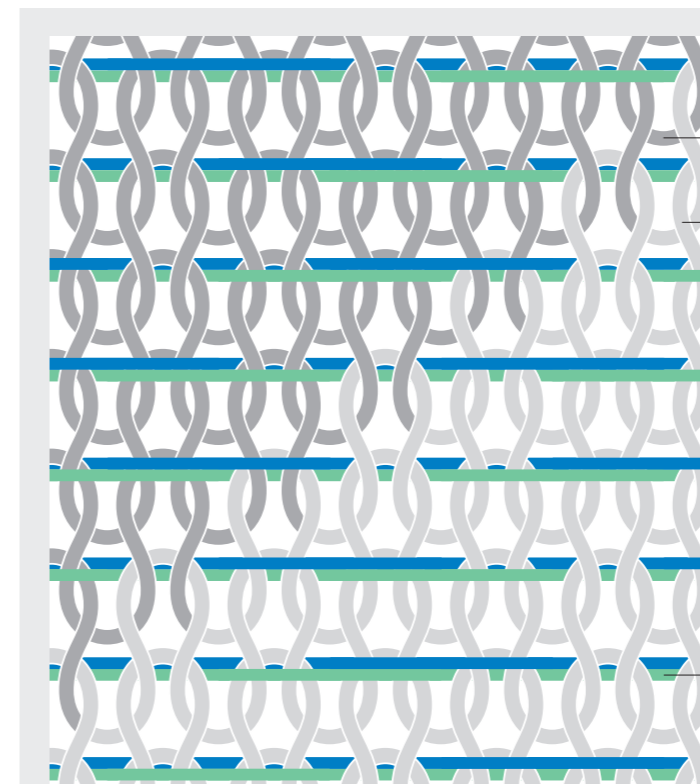


STOLL-ikat plating® jersey base fabric.

STOLL-weave-in® yarns are inserted by transferring different constellations of needles between the two weave-in yarns.

The weft insertion of both yarns occurs within one knitting row following different graphical stripes.

KNITTING TECHNIQUES



STOLL-IKAT PLATING® JERSEY

2x Pinori Filati / Glow
Nm 60 / 100% PES

2x Pinori Filati / Glow
Nm 60 / 100% PES

STOLL-WEAVE-IN® YARN

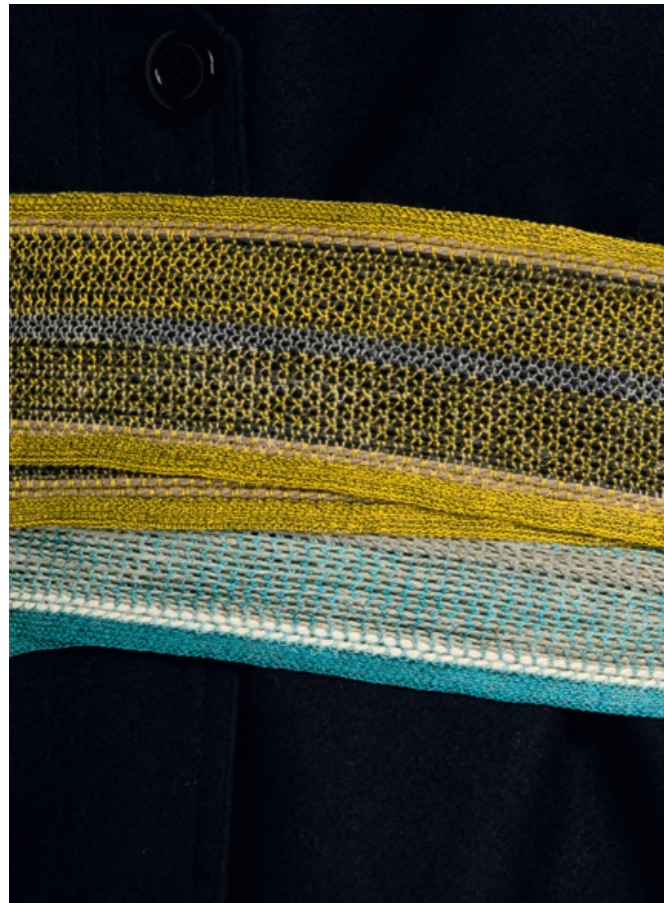
1x Gebrüder Otto / kbA Baumwolle
Nm 50/3 / 100% CO

STOLL-WEAVE-IN® YARN

1x Be.Mi.Va. / Cayenne
Nm 1,3 / 100% CO

PATTERN N° 1810095

BELT

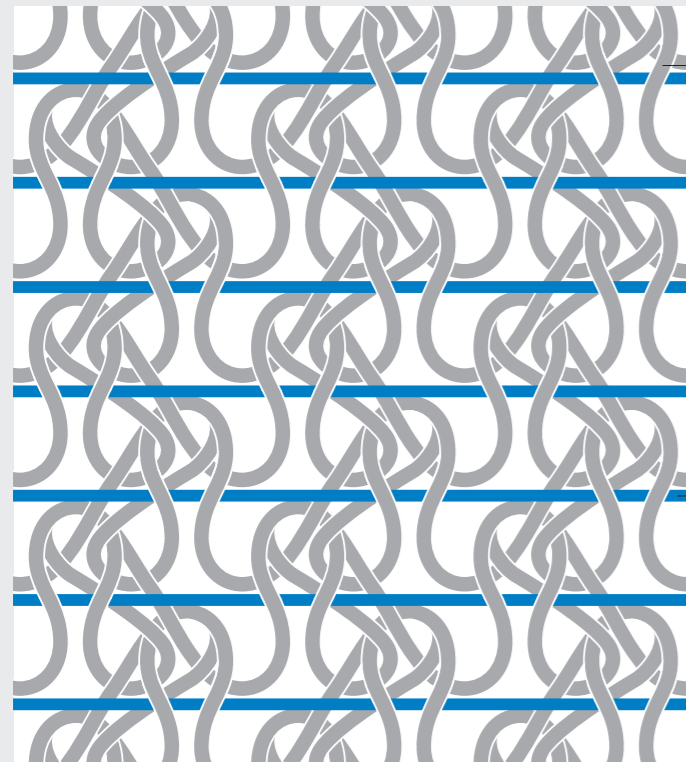


STOLL-ikat
plating®
net-structure.

Pointelle
net-structure is
alternately trans-
ferring in both
directions to avoid
tourquing.
STOLL-weave-in®
yarns are inserted
just before
pointelle stitch is
transferred back
to front needle bed
with racking.



Thermoplastic molded belt / see page 50



STOLL-IKAT PLATING®
POINTELLE NET-STRUCTURE

2x TWD Fibres / Diolen® text. SET trilobal
dtex 76 f24 x1 / 100% PES

1x Schoeller / Thermoplastic Yarn
Nm 40/1 / 60% PP / 40% AR

1x JRC-Reflex / CRY Standard
dtex 900 / PA / HT

STOLL-WEAVE-IN® YARN

1x C.T.F. / Gabillino
Nm 2,8 / 78% LI / 22% PA

PATTERN N° 1810087

DRAPED SKIRT

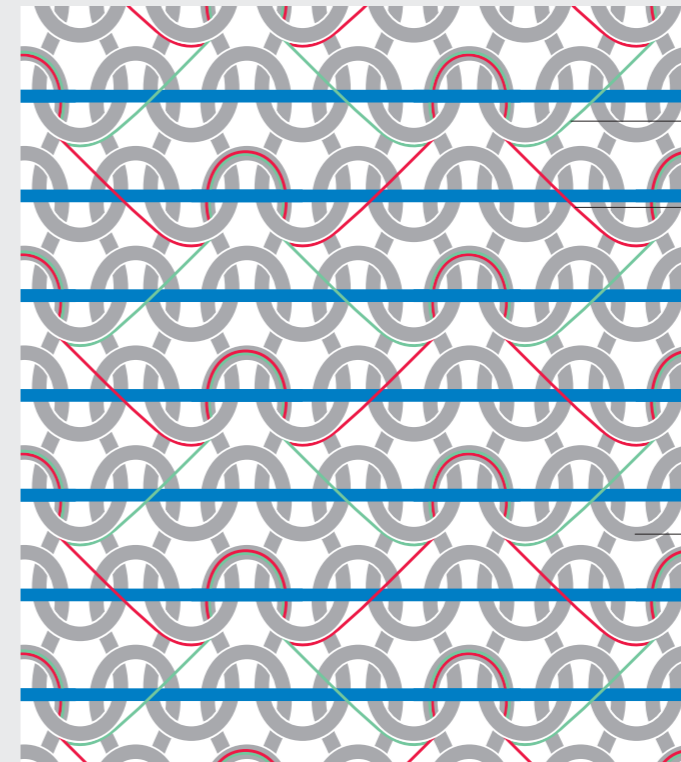


Draped skirt / see page 05



STOLL-ikat
plating®
reverse jersey.

Connecting yarn
is tucking on front
and back needles
and holding to
be transferred to
base fabric after
weave-in thread is
inserted.



HOLDING TUCK-TRANSFER YARN

1x TWD Fibres / Diolen® text. SET trilobal
dtex 76 f24 x1 / 100% PES

1x TWD Fibres / Diolen® text. SET trilobal
dtex 76 f24 x1 / 100% PES

STOLL-WEAVE-IN® YARN

1x Be.Mi.Va. / Sarong
Nm 4,5 / 100% VI

STOLL-IKAT PLATING®
REVERSE JERSEY

1x Pinori Filati / Glow
Nm 60 / 100% PES

1x Suedwollegroup / Burke (Banda TEC)
Nm 60/1 / 100% WV

S U P P L I E R S

A D D R E S S E S

ALPES MANIFATTURA FILATI S.P.A.
Via Salute 52 / 36028 Rossano Veneto (VI) / Italy
Tel +39 0424544200
alpes@alpesfilati.com / www.alpesfilati.com

A.M.F S.P.A.
Via B. Sacchi 54/58 / 36061 Bassano del Grappa (VI) / Italy
Tel +39 04248808
info@amfsnaps.com / www.amfsnaps.com

COFIL S.R.L.
Via dell'Artigianato 5 / 59013 Montemurlo (PO) / Italy
Tel +39 0574650704
cofil@filaticofil.com / www.filaticofil.com

C.T.F. S.R.L.
Via Labriola 260 / 59013 Montemurlo (PO) / Italy
Tel +39 0574556280
ctf@compagniatessile.it

DI.VÈ S.P.A.
Via Papa Giovanni XXIII 94/96 / 13882 Vergnasco-Cerrione (BI) / Italy
Tel +39 0152583057
dive@filatidive.it / www.filatidive.it

D-K KUNSTSTOFF-FOLIEN GMBH
Seelmannstraße 16 / 06847 Dessau-Roßlau / Germany
Tel +49 (0)3405711712
d-k-kunststoff-folien@t-online.de / www.d-k-kunststoff-folien.de

EMILCOTONI S.P.A.
Viale dell'Industria 12 / 29122 Piacenza (PC) / Italy
Tel +39 0523606913
info@emilcotoni.it / www.emilcotoni.it

E. MIROGLIO EAD
Industrial zone / 8800 Sliven / Bulgaria
Tel +39 0445595777
info@emiroglio.com / www.emiroglio.com

EMS-GRILTECH
Via Innovativa 1 / 7013 Domat/Ems / Switzerland
Tel +41 816327202
info@emsgriltech.com / www.emsgriltech.com

FILATI BE.MI.VA. S.P.A.
Via Mugellese 115 / 50013 Capalle (FI) / Italy
Tel +39 055898261
sales@bemiva.it / www.bemiva.it

FILATI RICCIO S.R.L.
Via 1° Maggio 4 / 59013 Oste-Montemurlo (PO) / Italy
Tel +39 0574680906
info@filatiriccio.it / www.filatiriccio.it

FILPUCCI S.P.A.
Via dei Tigli 41 / 50013 Capalle (FI) / Italy
Tel +39 05589871
filpucci@filpucci.it / www.filpucci.it

FUESERS GARNE GMBH
Eichsfelder Str. 7 / 40595 Düsseldorf / Germany
Tel +49 (0)211970960
info@fuesers.de / www.fuesers.de

GEBRÜDER OTTO BAUMWOLLFEINZWIRNEREI GMBH & CO. KG
Königstraße 34 / 89165 Dietenheim / Germany
Tel +49 (0)734796060
info@otto-garne.com / www.otto-garne.de

HEILIGENSTÄDTER REISSVERSCHLUSS GMBH & CO. KG
Rengelröder Weg 33 / 37308 Heilbad Heiligenstadt / Germany
Tel +49 (0)360655220
info@h-rv.de / www.h-rv.de

JRC-REFLEX SAS
PO Box 133 / 26104 Romans sur Isere / France
Tel +33 475025770
info@jrc-reflex.com / www.jrc-reflex.com

LANECARDATE S.P.A.
Via Garibaldi 57/A / 13836 Cossato (BI) / Italy
Tel +39 0159840035
info@lanecardate.com / www.lanecardate.com

LANIFICIO DELL'OLIVO S.P.A.
Via F.lli Cervi 84 / 50013 Campi B. (FI) / Italy
Tel +39 055898641
info@lanificiodellolivo.it / www.lanificiodellolivo.it

LEMUR S.R.L.
Via Volta 27 / 38061 Ala (TN) / Italy
Tel +39 0464672171
info@lemur-italy.com / www.lemur-italy.com

LINEAPIÙ ITALIA S.P.A.
Via Brunelleschi 6/F / 50010 Capalle (FI) / Italy
Tel +39 05589561
info@lineapiu.com / www.lineapiu.com

LUIGI BOLDRINI S.R.L.
Via E. Codignola 4 / 50018 Scandicci (FI) / Italy
Tel +39 055755220 / Tel +39 055750829
info@luigiboldrini.com / www.luigiboldrini.com

MANIFATTURA IGEA S.P.A.
Via Pollative 119 / 59100 Prato (FI) / Italy
Tel +39 05745181
igea@igeayarn.it / www.igeayarn.it

MANIFATTURA SESIA S.R.L.
Via Tosalli 67/69 / 28073 Fara Novarese (NO) / Italy
Tel +39 0321819984
sales@mansesia.it / www.mansesia.it

MILLEFILI S.P.A.
Via C. Marx 35/37 / 41012 Carpi (MO) / Italy
Tel +39 0596222711
millefili@millefili.it / www.millefili.com

S U P P L I E R S

A D D R E S S E S

NIKOL WEBER KG
Technische Garne und Zwirne
Mühlberg 16 / 95152 Selbitz / Germany
Tel +49 (0) 928098000
info@nikol-weber.de / www.nikol-weber.de

OTEX TEXTILVEREDELUNG GMBH
Heinrich-Heine-Str. 5 / 09557 Flöha / Germany
Tel +49 (0)3726792380
info@o-tex.de / www.o-tex.de

PINORI FILATI S.P.A.
Via Eugenio Gestri 19 / 59100 Prato (PO) / Italy
Tel +39 057454911
info@pinori.it / www.pinori.it

QINGDAO BANGYUAN TECHNOLOGY LTD. CO.
Tel +86 53286763511
info@bornyarn.com / www.bornyarn.com

SECO ACCESSOIRES GMBH
Florianstraße 6 / 95643 Tirschenreuth / Germany
Tel +49 (0)96312603
info@seco-knopf.de / www.seco-knopf.de

SCHOELLER GMBH & CO.KG
Spinnereistraße 10 / 6971 Hard / Austria
Tel +43 (0)55746090
info@schoeller-wool.com / www.schoeller-wool.com

SÜDWOLLE GMBH & CO. KG
Wieseneckstr. 26 / 90571 Schwaig / Germany
Tel +49 (0)911504800
yarns@suedwollegroup.de / www.suedwollegroup.com

TWD FIBRES GMBH
Kunertstraße 1 / 94469 Deggen Dorf / Germany
Tel +49 (0)9901790
info@twd-fibres.de / www.twd-fibres.de

UNITIN® INDUSTRIAS MORERA S.A.
C/ Pau Claris 115 1º2ª / 08009 Barcelona / Spain
Tel +34 934881910
xmorera@unitin.com / www.unitin.com

W. ZIMMERMANN GMBH & CO. KG
Riederstraße 7 / 88171 Weiler-Simmerberg / Germany
Tel +49 (0)838792120
info@zimsi.com / www.zimsi.com

ZEGNA BARUFFA LANE BORGOSIESIA S.P.A.
Via Milano 160 / 13856 Vigliano Biellese (BI) / Italy
Tel +39 0157001
baruffa@baruffa.com / www.baruffa.com

A D D R E S S E S

S U P P L I E R S

A D D R E S S E S

S U P P L I E R S

MATERIALS

OVERVIEW

N°	SUPPLIER	YARN	COUNT	COMPOSITION
01	Zegna Baruffa	Millennium	Nm 80/2	100% WV
02	C.T.F.	Pomposo	Nm 4,5	75% SE / 25% PU
03	TWD Fibres	Diolen® text. SET trilobal	dtex 76 f24 x1	100% PES
04	Di.Vè	Orfeo	Nm 1,8	51% PC / 27% WV / 10% WP / 10% SE / 2% VI
05	Be.Mi.Va.	Sarong	Nm 4,5	100% VI
06	Filpucci	Lumière	Nm 60	100% VI
07	Be.Mi.Va.	Alexa	Nm 2,6	70% WV / 30% PA
08	Be.Mi.Va.	Cayenne	Nm 1,3	100% CO
09	Be.Mi.Va.	Maya	Nm 6,5	100% PA
10	Lineapiù	Scarabeo	Nm 52	62% CO / 26% PES / 12% PA
11	Nikol Weber	Polypropylen Bändchen	Nm 5,3	100% PP
12	Zegna Baruffa	Cashwool	Nm 30/2	100% WV
13	Lineapiù	Giselle	Nm 24	63% VI / 37% PA
14	Zegna Baruffa	Maxi Stampato	Nm 4,6	100% WV
15	Igea	Bambi	Nm 3,4	66% PES / 34% PA
16	C.T.F.	Gabillino	Nm 2,8	78% LI / 22% PA
17	Lineapiù	Magia	Nm 20	72% VI / 19% PA / 7% WV / 2% EA
18	C.T.F.	Invincibile	Nm 4	70% PES / 30% VI
19	Filpucci	Planet	Nm 23	87% LI / 13% PA
20	Lineapiù	Eskimo	Nm 2	40% PC / 36% WP / 14% WV / 10% PA
21	C.T.F.	Skarikato/2	Nm 28/2	100% LI
22	C.T.F.	Cera	Nm 8	100% CO
23	Nikol Weber	Polypropylen Bändchen	Nm 5,3	100% PP
24	Filati Riccio	Like	Nm 1,9	45% WV / 45% PC / 10% PA
25	Unitin	Indigo Fantasia	Nm 2	100% CO
26	Lanecardate	Felpa	Nm 15/12	100% WV
27	Suedwollegroup	Burke (Banda TEC)	Nm 60/1	100% WV
28	Pinori Filati	Glow	Nm 60	100% PES
29	Emilcotoni	Suvin HT	Nm 90/3	100% CO
30	Zegna Baruffa (Chiavazza)	Hibiscus	Nm 2	100% WV
31	Igea	Lotus	Nm 18	90% CO / 10% LI
32	Zegna Baruffa (Chiavazza)	Orsetto	Nm 2	85% WV / 15% PA
33	C.T.F.	Biakka	Nm 3,1	90% LI / 10% VI
34	Alpes	Sirte Fiammato	Nm 7	53% LI / 47% CO
35	Qingdao Bangyuan Technology	TPU Imitation Leather Yarn®	den 1000	78% TPU / 22% PES

Editorial department: Fashion & Technology
Art direction & graphic design: ssawstudio.com

© 2019 H. STOLL AG & CO. KG

MATERIALS

OVERVIEW

MATERIALS

MATERIALS

OVERVIEW

N°	SUPPLIER	YARN	COUNT	COMPOSITION
01	Zegna Baruffa	Millennium	Nm 80/2	100% WV
02	C.T.F.	Pomposo	Nm 4,5	75% SE / 25% PU
03	TWD Fibres	Diolen® text. SET trilobal	dtex 76 f24 x1	100% PES
04	Di.Vè	Orfeo	Nm 1,8	51% PC / 27% WV / 10% WP / 10% SE / 2% VI
05	Be.Mi.Va.	Sarong	Nm 4,5	100% VI
06	Filpucci	Lumière	Nm 60	100% VI
07	Be.Mi.Va.	Alexa	Nm 2,6	70% WV / 30% PA
08	Be.Mi.Va.	Cayenne	Nm 1,3	100% CO
09	Be.Mi.Va.	Maya	Nm 6,5	100% PA
10	Lineapiù	Scarabeo	Nm 52	62% CO / 26% PES / 12% PA
11	Nikol Weber	Polypropylen Bändchen	Nm 5,3	100% PP
12	Zegna Baruffa	Cashwool	Nm 30/2	100% WV
13	Lineapiù	Giselle	Nm 24	63% VI / 37% PA
14	Zegna Baruffa	Maxi Stampato	Nm 4,6	100% WV
15	Igea	Bambi	Nm 3,4	66% PES / 34% PA
16	C.T.F.	Gabillino	Nm 2,8	78% LI / 22% PA
17	Lineapiù	Magia	Nm 20	72% VI / 19% PA / 7% WV / 2% EA
18	C.T.F.	Invincibile	Nm 4	70% PES / 30% VI
19	Filpucci	Planet	Nm 25	87% LI / 13% PA
20	Lineapiù	Eskimo	Nm 2	40% PC / 36% WP / 14% WV / 10% PA
21	C.T.F.	Skarikato/2	Nm 28/2	100% LI
22	C.T.F.	Cera	Nm 8	100% CO
23	Nikol Weber	Polypropylen Bändchen	Nm 5,5	100% PP
24	Filati Riccio	Like	Nm 1,9	45% WV / 45% PC / 10% PA
25	Unitin	Indigo Fantasia	Nm 2	100% CO
26	Lanecardate	Felpa	Nm 15/12	100% WV
27	Suedwollegroup	Burke (Banda TEC)	Nm 60/1	100% WV
28	Pinori Filati	Glow	Nm 60	100% PES
29	Emilcotoni	Suvin HT	Nm 90/3	100% CO
30	Zegna Baruffa (Chiavazza)	Hibiscus	Nm 2	100% WV
31	Igea	Lotus	Nm 18	90% CO / 10% LI
32	Zegna Baruffa (Chiavazza)	Orsetto	Nm 2	85% WV / 15% PA
33	C.T.F.	Biakka	Nm 3,1	90% LI / 10% VI
34	Alpes	Sirte Fiammato	Nm 7	53% LI / 47% CO
35	Qingdao Bangyuan Technology	TPU Imitation Leather Yarn®	den 1000	78% TPU / 22% PES

OVERVIEW

MATERIALS

MATERIALS



01 02 03 04 05 06 07 08 09 10 11 12 13 14 15 16 17 18 19 20 21 22 23 24 25 26 27 28 29 30 31 32 33 34 35

STOLL HEADQUARTERS

GERMANY

H. STOLL AG & CO. KG

Stollweg 1 / 72760 Reutlingen

Tel +49 (0)71213130 / Fax +49 (0)7121313110

contact@stoll.com / www.stoll.com

STOLL FASHION & TECHNOLOGY GERMANY

H. STOLL AG & CO. KG

Stollweg 1 / 72760 Reutlingen

Tel +49 (0)71213130 / Fax +49 (0)7121313426

fashion.technology@stoll.com / www.stoll.com

STOLL BRANCHES & AGENCIES

FRANCE

SAS STOLL FRANCE SERVICES

87, Avenue Henri Barbusse / 92140 Clamart

Tel +33 141088383 / Fax +33 141088500

stollfrance@wanadoo.fr

ITALY

STOLL ITALIA SRL.

Via Siemens, 3/A / 41012 Carpi (MO)

Tel +39 059651899 / Fax +39 059652314

stollitalia@stoll.it

USA, CANADA

STOLL AMERICA KNITTING MACHINERY, INC.

250 West 39th Street (Ground Floor) / New York / NY 10018

Tel +1 2123983869 / Fax +1 2129217639

info@stollamerica.com

JAPAN

STOLL JAPAN CO. LTD.

Minato-Ku / Shibaura 4-16-23

Aquacity Shibaura / JP-Tokyo 108-0023

Tel +81 337693690 / Fax +81 337693694

morosawa@stolljapan.jp

INDIA

STOLL INDIA PVT. LTD.

C-25, Sector 63 / 201 301 Noida / Uttar Pradesh

Tel +91 1204690850 / Fax +91 1204690851

saran@stoll-india.com

CHINA, HONG KONG, TAIWAN, THAILAND, VIETNAM

CHEMTAX (STOLL) COMPANY LTD.

Flat G, 7/F, Phase 2 / Kwai Shing Industrial Building / 42-46 Tai Lin Pai Road /

Kwai Chung, N.T. / Hong Kong

Tel +852 23686269 / Fax +852 27212687

annie.tse@chemtax.com

BANGLADESH

STOLL BANGLADESH LTD.

House 30, Road 10, Block-K / Baridhara, Dhaka-1212 / Bangladesh

Tel +88 029891719

ali.akbar@stoll.com