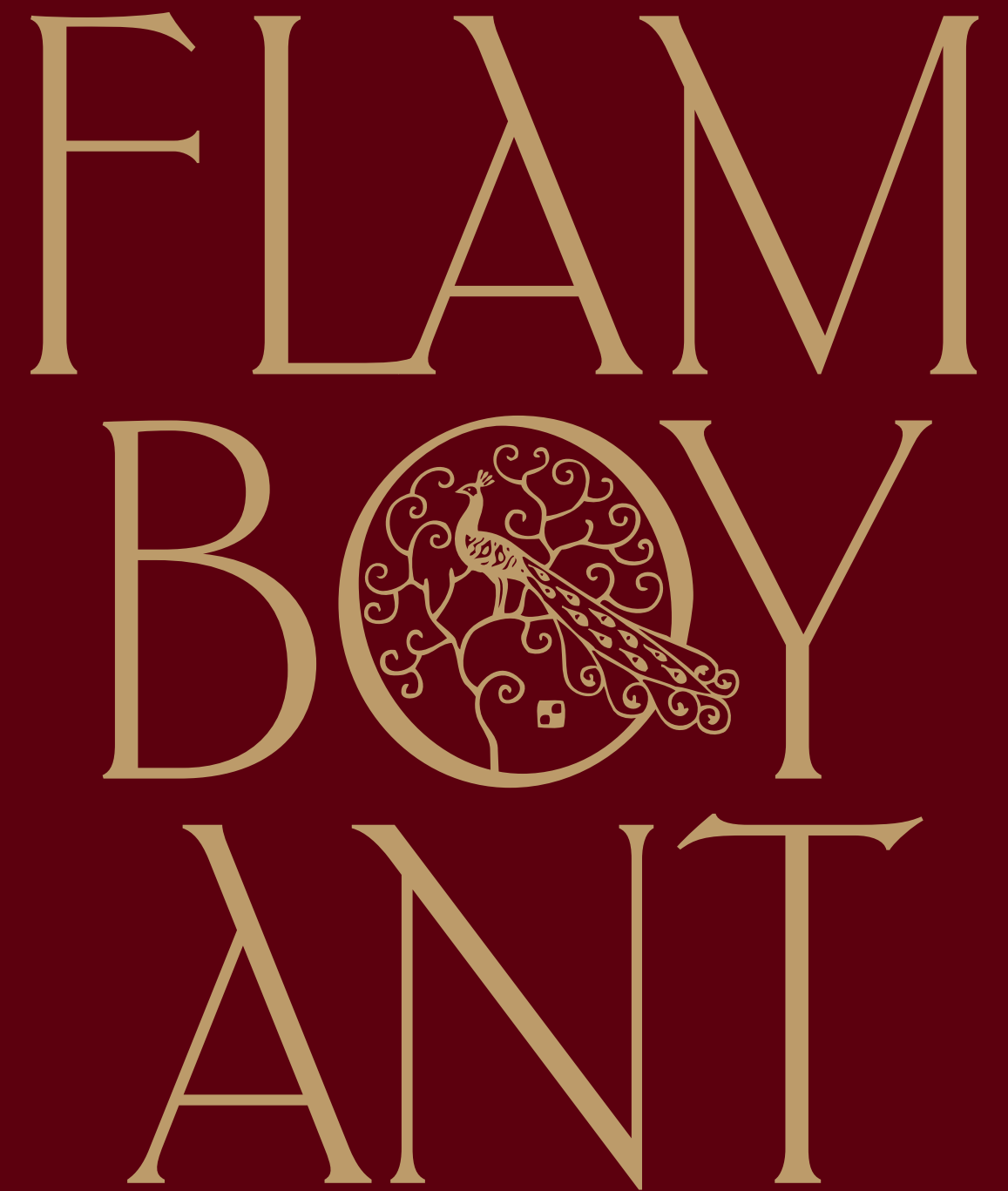


FLAM
BOY
ANT







Since the 16th century, when Europe's interest in countries in the East rose, European art became distinctly influenced by non-Western art. First stimulated by trade with the East, faraway countries became easier accessible with the advent of the railroad and steamship. Travellers took home not only exotic objects, but also inspiration that influenced their taste at home and led to a new aesthetic in the West, a combination of the seemingly incompatible. Western artists, designers and architects drew from oriental subjects, costumes, ornamental motifs and complex geometric patterns and portrayed the Orient as exotic, colourful and sensual. Exoticism in the decorative arts and interior decoration was associated with fantasies of opulence and 'barbaric splendor'.

By the middle of the 19th century, many non-Western forms and ornamental motifs had found their way into the vocabulary of European decorative arts.

For AW 13/14 we drew inspiration from this rich clash of aesthetics and from flamboyant style icons of the time. The collection combines long and elegant silhouettes, draped cuts and layered knits with ornaments, exotic motifs and graphic patterns. Hairy textures, achieved by the use of mohair, chenille and alpaca yarns form a contrast to shiny yarns with viscose blends.

In addition to established Stoll knitting techniques like intarsia and multigauge, we rediscovered an almost forgotten technique: Stoll-devoré knit® offers a unique method of knitting transparent and opaque areas simultaneously. It allows to design

transparency into knits like known from the appearance of burn-out techniques or so called devoré fabrics.

The colour pallet is also inspired by the opulence of exotic subjects, from earth tones to rich purples, reds and greens and shiny metallics.

The collection includes 4 designs created by students as a result of a joint project between the Stuttgart State Academy of Arts and Design, the Italian yarn manufacturer Zegna Baruffa Lane Borgosesia and Stoll Germany. The designs were shown during Pitti Filati in Florence on the booth of Zegna Baruffa Lane Borgosesia and in the Stoll showroom in Manhattan.

Wilhelma, the zoological and botanical garden of Stuttgart, with its impressive 19th century Moorish style buildings and greenhouses made the right setting for

the photo shoot of the collection.

Indulge in the opulent pieces and be inspired by the influences of Oriental culture from the past centuries translated by Stoll into modern techniques!

INSPIRATION





1210060
CMS 530 HP
E 18
○

intarsia rib dress with separate tubular starts for each colour with 28 (30) intarsia yarn carriers, top part with smooth transition from the ribs into straps (ending in neckline), indicated V-neck by ribs without intarsia binding, ribs with smallest intarsia-colour field width



1210103
CMS 822 HP KNIT & WEAR
E 7.2

long sleeveless Fully Fashion dress
with shoulder straps in 1x1 rib with
transfer structure, double jersey
structure with needle set out and
origami pleats, godet insert at
the rear, dress knitted from top
to bottom



1210084

CMS 530 HP MULTI GAUGE

E 7.2



Fully Fashion pullover with cascading
neckline and relief-diamond motif in
plated pointelle and float structure



1210034
CMS 530 HP MULTI GAUGE
E 7.2

STOLL-MULTI GAUGES®
dress with V-neck and fringe decoration,
1x1 rib in chest area, shoulder part in
1x1 tubular, skirt part knitted with all
needles in tubular with slub yarn



1210034
CMS 530 HP MULTI GAUGE
E 7.2

○
STOLL-MULTI GAUGES®
dress with V-neck and fringe
decoration, 1x1 rib in chest area,
shoulder part in 1x1 tubular,
skirt part knitted with all needles
in tubular with slub yarn



1210109
CMS 530 HP MULTI GAUGE
E 8.2

○
long sleeveless Fully Fashion dress
in double jersey float structure with
godet insert at the rear and deep
back cut-out



1210019
CMS 530 HP MULTI GAUGE
E 7.2

○
STOLL-DEVORÉ KNIT®
STOLL-MULTI GAUGES®

sleeveless Fully Fashion dress with
filigree motif around the neckline,
knitted with all needles, skirt part
with rolled hem in plush and tubular
structure with filigree motifs and
striped background with connection
points, knitted with all needles and
1x1 technique, top and skirt part
combined with 1x1 tubular drawcord



1210019
CMS 530 HP MULTI GAUGE
E 7.2

STOLL-DEVORÉ KNIT®
STOLL-MULTI GAUGES®
sleeveless Fully Fashion dress with
filigree motif around the neckline,
knitted with all needles, skirt part
with rolled hem in plush and tubular
structure with filigree motifs and
striped background with connection
points, knitted with all needles and
1x1 technique, top and skirt part
combined with 1x1 tubular drawcord

1210110
CMS 530 HP MULTI GAUGE
E 7.2

STOLL-APPLICATIONS®
Fully Fashion raglan coat in A-line
with open radial intarsia wave
applications on inside striped tubular
structure, knitted on trim with
intarsia waves





1210020
CMS 520 C
E 3 m.3L

○
STOLL-MULTI GAUGES®
sleeveless Fully Fashion dress in
different gauge optics with 1-needle
intarsia stripes and initial row in
manual work look, bottom and
middle part knitted in 1x1 technique
with and without cast off, upper part
knitted with all needles



1210021
CMS 530 HP MULTI GAUGE
E 7.2

STOLL-APPLICATIONS®
dress knitted in 1x1 technique with
purl stripes and applications in
interlock purl, made up across
the knitting direction, sleeves with
open rhombic intarsia pattern
in double jersey



1210144
CMS 530 HP MULTI GAUGE
E 7.2
STOLL-DEVORÉ KNIT®
jersey wrap-around dress with
different filigree motifs and
asymmetrical hem



1210036
CMS 530 HP MULTI GAUGES
E 3,5,2

○
dress in stripe design with gore and
cast off technique and knitted on
jersey undergarment



1210035
CMS 530 HP MULTI GAUGE
E 7.2
○
STOLL-MULTI GAUGES®
Full Fashion dress, top with different
pointelle structures, tails in 2-layered,
racked mesh structure with stitch
doubling to the top part, underskirt
in jersey with V-goring



1210003 / 1210004 / 1210005
CMS 502 HP
E 18

○
Fully Fashion pullover with leopard
skin motif in pointelle structure, cuffs
in interlock



1210041
CMS 530 HP MULTI GAUGE
E 8.2

○
Fully Fashion dress with vertical
intarsia stripes in jersey and 2-colour
tubular with openings, pattern offset
from skirt to top part



1210120
CMS 530 HP MULTI GAUGE
E 7.2

○
sleeveless asymmetrical Fully Fashion
mini dress with layered skirt part
and side openings, skirt in 1-needle
relief-diamond structure with
2-colour twined floats, top part in
2-colour jersey structure



1210101
CMS 530 HP MULTI GAUGE
E 3,5,2

○
Fully Fashion coat in intarsia wave
structure with holding stitches and
goring, transparent areas in 1x1
technique, knitted on trim in
reverse tubular



1210134
CMS 530 HP MULTI GAUGE
E 3,5.2

○
STOLL-MULTI GAUGES®
Fully Fashion pullover with dégradé
patterning in 2-colour jacquard with
1x1 net back and intarsia neckline



1210121
CMS 530 HP MULTI GAUGE
E 3,5,2

Fully Fashion top with pointelle
diamond-motif in continually
decreasing size achieved by Fair Isle

1210071
CMS 530 HP MULTI GAUGE
E 8,2

Fully Fashion mini skirt in pointelle
and float structure mix with holding
stitches, intarsia areas and bordure
with shell-pointelle structure, shape
achieved by goring



1210040
CMS 530 HP MULTI GAUGE
E 3,5,2

STOLL-MULTI GAUGES®
Fully Fashion dress with intarsia areas
in honeycomb and shell-float
structure, 2x2 rib waistband

1210033
CMS 530 HP MULTI GAUGE
E 7.2

○
STOLL-MULTI GAUGES®
Fully Fashion dress, knitted in one
piece, consisting of intarsia ribbons,
skirt part with plated, crinkled
reverse jersey

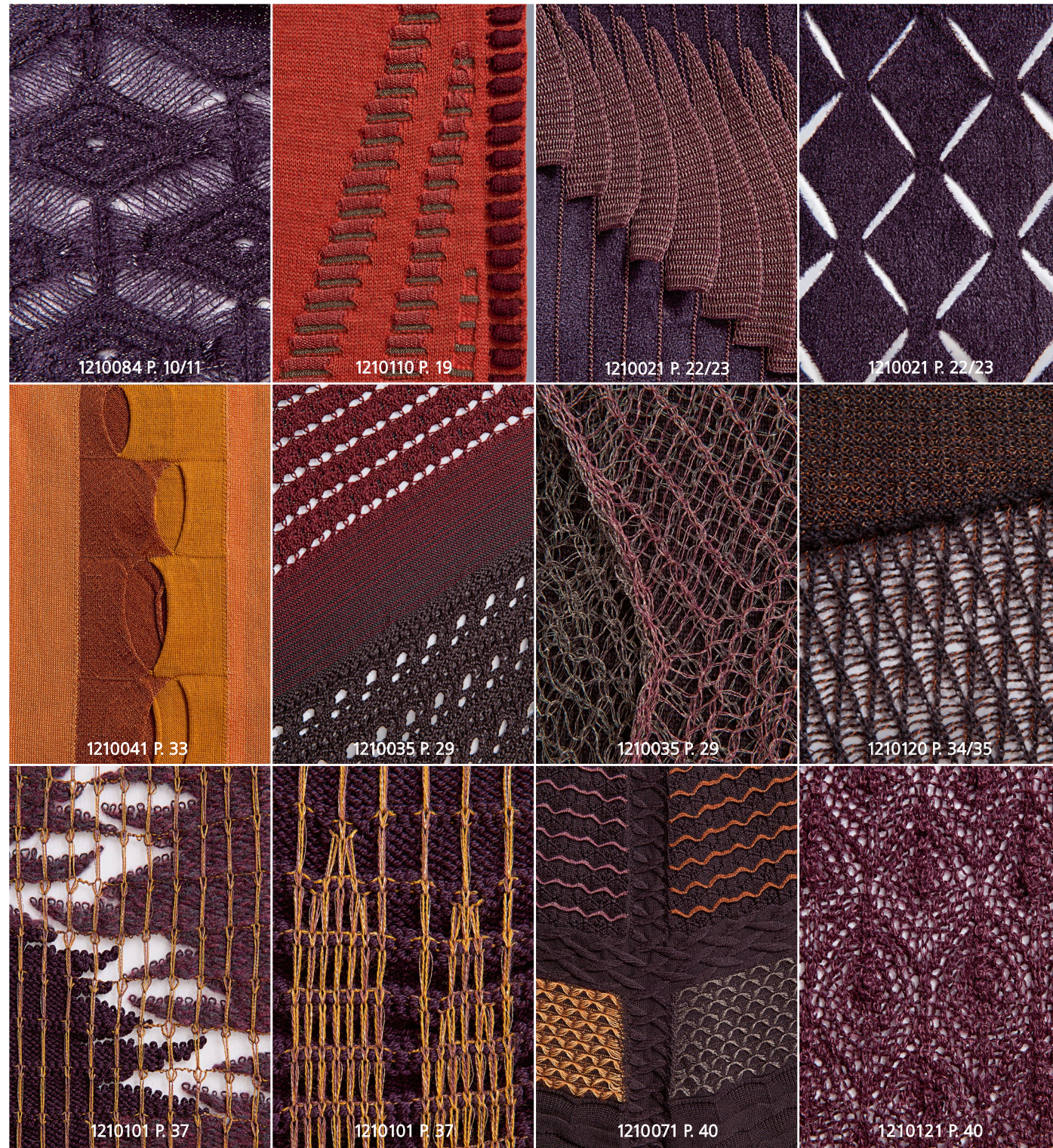




1210046
CMS 530 HP
E 14

○
STOLL-DEVORÉ KNIT®
sleeveless Fully Fashion jersey dress
with cheetah motif in intarsia-cross
tubular jacquard and filigree motif

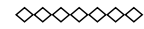
◇◇◇◇◇ DETAILS ◇◇◇◇◇



◇◇◇◇◇ YARN DETAILS ◇◇◇◇◇

Page	N°	Yarn Details
7	1210060	Zegna Baruffa: Millennium, Nm 60/2 (100% WV)
8/9	1210103	Lineapiù: Image, Nm 46 (80% VI, 20% PES) Zegna Baruffa: Millennium, Nm 60/2 (100% WV) Di.Vè: Confort, Nm 118 (90% PA, 10% EA) Sesia: Glacé, Nm 67 (70% CO, 30% PES) Zimmermann: 6348XX (74,7% PA, 25,3% EA)
10/11	1210084	Lineapiù: Giselle, Nm 24 (63% VI, 37% PA) Lineapiù: Image, Nm 46 (80% VI, 20% PES)
13/14	1210034	Lineapiù: Renoir, Nm 16 (37% PA, 32% WM, 31% WV) Zegna Baruffa: Cashwool, Nm 30/2 (100% WV)
15	1210109	Lineapiù: Image, Nm 46 (80% VI, 20% PES) Colorific: Monofil T, 80 den (100% PA)
16/17/18	1210019	Zegna Baruffa: Millennium, Nm 60/2 (100% WV) Igea: Shanty, Nm 50 (88% VI, 12% PA) Be.Mi.Va.: Cellophane, Nm 150/1 (100% PA)
19	1210110	Zegna Baruffa: Raja, Nm 48/2 (70% WV, 30% WS) Zegna Baruffa: Millennium, Nm 60/2 (100% WV) Lineapiù: Image, Nm 46 (80% VI, 20% PES) Igea: Shanty, Nm 50 (88% VI, 12% PA)
21	1210020	Igea: Airsoft, Nm 2,9 (45% WV, 45% PES, 10% PC) Sesia: Ulisse, Nm 1,2 (100% WV)
22/23	1210021	Lineapiù: Giselle, Nm 24 (63% VI, 37% PA) Sesia: Glacé, Nm 67 (70% CO, 30% PES)
24/25	1210144	Zegna Baruffa: Millennium, Nm 60/2 (100% WV) Be.Mi.Va.: Cellophane, Nm 150/1 (100% PA)
26/27	1210036	Igea: Shanty, Nm 50 (88% VI, 12% PA) Itessa: Alpaboom Antiflame, Nm 2,5 (50% WP, 45% PC, 5% WV) Lineapiù: Image, Nm 46 (80% VI, 20% PES)
29	1210035	Zegna Baruffa: Cashwool, Nm 30/2 (100% WV) Sesia: Glacé, Nm 67 (70% CO, 30% PES) Lineapiù: Image, Nm 46 (80% VI, 20% PES)
30/31	1210003 1210004 1210005	Zegna Baruffa: Millennium, Nm 60/2 (100% WV) Emilcotoni: York Bright, Nm 200/2 (100% CO) Lineapiù: Margot, Nm 44 (100% SE)
33	1210041	Lineapiù: Image, Nm 46 (80% VI, 20% PES) Zegna Baruffa: Millennium, Nm 60/2 (100% WV) Igea: Shanty, Nm 50 (88% VI, 12% PA)
34/35	1210120	Lineapiù: Camelot, Nm 22 (44% WM, 37% PA, 19% WV) Lineapiù: Image, Nm 46 (80% VI, 20% PES)
37	1210101	Zegna Baruffa: Cashwool, Nm 30/2 (100% WV) Zegna Baruffa: Noon, Nm 14/2 (70% WV, 30% PA) Zegna Baruffa: Millennium, Nm 60/2 (100% WV) Lineapiù: Image, Nm 46 (80% VI, 20% PES) Colorific: Monofil T, 80 den (100% PA)
38/39	1210134	Zegna Baruffa: Cashwool, Nm 30/2 (100% WV) Igea: Airsoft, Nm 2,9 (45% WV, 45% PES, 10% PC)
40	1210121 1210071	Itessa: Alpaca, Nm 16/2 (100% WP) Igea: Shanty, Nm 50 (88% VI, 12% PA) Zegna Baruffa: Millennium, Nm 60/2 (100% WV) Igea: Shanty, Nm 50 (88% VI, 12% PA) Lineapiù: Image, Nm 46 (80% VI, 20% PES) Sesia: Glacé, Nm 67 (70% CO, 30% PES) Igea: Pepe, Nm 13,5 (66% VI, 34% WV)
41	1210040	Igea: Airsoft, Nm 2,9 (45% WV, 45% PES, 10% PC) Zegna Baruffa: Cashwool, Nm 30/2 (100% WV) Zimmermann: 4495X (93,8% PA, 6,2% EA)
42/43	1210033	Lineapiù: Giselle, Nm 24 (63% VI, 37% PA) Igea: Shanty, Nm 50 (88% VI, 12% PA) Lineapiù: Camelot, Nm 22 (44% WM, 37% PA, 19% WV)
44	1210046	Zegna Baruffa: Millennium, Nm 60/2 (100% WV) Lineapiù: Image, Nm 46 (80% VI, 20% PES) Be.Mi.Va.: Cellophane, Nm 150/1 (100% PA)

STOLL-DEVORÉ KNIT®



THE REBIRTH OF AN
ALMOST FORGOTTEN
STOLL TECHNIQUE



1210118

After decades Stoll gives a new renaissance to an old technique. This pattern technique offers once again a unique method of knitting transparent and opaque areas simultaneously. It enables you to design transparency into your knits just as you might know from the appearance of burn-out techniques or so called devoré fabrics. We call it Stoll-devoré knit®.

Beside the sophisticated look which comes across with this technology there are other particular finesses related to this stitch formation.

Using fine and coarse gauge yarns in one and the same knit, a considerable reduction of weight can be obtained. This directly translates into savings on material and costs especially for coarse gauge fabrics and precious yarns.

EXAMPLES FROM THE COLLECTION

1210019
P. 16/17/18



2-ply filigree structure with monofilament knitted in 1x1 with ringed back



with the same machine setting you will be also enabled to knit robust plush fabrics if you think of imitating 'animal furs'

front side

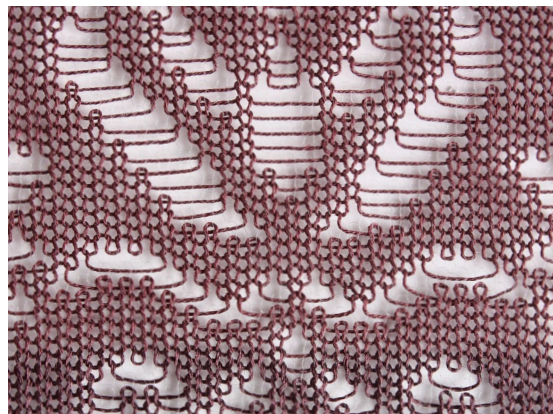


reverse side

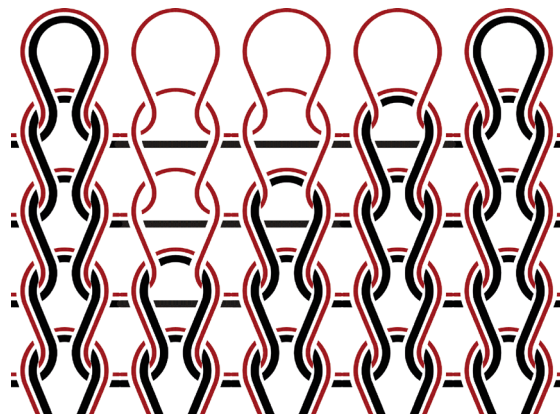


1210046
P. 44

Devoré patterns are knitting patterns that have 2 stitch structures (stitch and float) laying above each other in one knitting row.



Devoré-pattern



Stitch notation

The single jersey basic structure (SJ) is formed by a thin, transparent monofilament thread that is also called binding thread. The motif results by selecting stitches that are formed by thicker yarn. This yarn is called motif yarn. The needles that are not selected for the stitch will be driven out and the motif yarn will be laid-in as float. Both yarns will be sunk together.

STOLL HEADQUARTER

GERMANY

H. Stoll GmbH & Co. KG – Stollweg 1 – 72760 Reutlingen
T +49 (0)71213130, F +49 (0)7121313110
contact@stoll.com, www.stoll.com

STOLL FASHION & TECHNOLOGY

STOLL FASHION & TECHNOLOGY GERMANY

H. Stoll GmbH & Co. KG – Stollweg 1 – 72760 Reutlingen
T +49 (0)71213130, F +49 (0)7121313426
contact@stoll.com, www.stoll.com

STOLL FASHION & TECHNOLOGY CENTER NEW YORK

250 West 39th Street (Ground Floor) – New York – NY 10018
T +1 2123983869, F +1 2129217639
info@stollfny.com, www.stollfny.com

STOLL BRANCHES & AGENCIES

FRANCE

Stoll France
85-87 Avenue Henri Barbusse – 92140 Clamart
T +33 141088383, F +33 141088500
stollfrance@wanadoo.fr

ITALY

Stoll Italia srl.
Via Dei Maniscalchi 9/A – 41012 Carpi (MO)
T +39 059651899, F +39 059651870
stollitalia@stoll.it

USA, CANADA

Stoll America Knitting Machinery, Inc.
250 West 39th Street (1st Floor) – New York – NY 10018
T +1 2123983869, F +1 2129217639
info@stollamerica.com

JAPAN

Stoll Japan Co. Ltd.
Minato-Ku – Shibaura 4-16-23 – Aquacity Shibaura 9F – JP-Tokyo 108-0023
T +81 337693690, F +81 337693694
info@stolljapan.jp

INDIA

Stoll India Pvt. Ptd. – C-25, Sector 63 – 201 301 Noida – Uttar Pradesh
T +91 1204690850/3298033, F +91 1204690851
contact@stoll-india.com

CHINA, HONG KONG, TAIWAN, THAILAND, VIETNAM

Chemtax (Stoll) Company Limited – 6/FI. Goldsland Building
22-26 Minden Avenue – Tsim Sha Tsui, Kowloon – Hong Kong
T +852 23686269, F +852 23687500
stoll@chemtax.com

YARN MANUFACTURERS

FILATI BE.MI.VA. S.P.A

Via Muggellese 115 – 50010 Capalle (FI) – Italy
T +39 055898261, F +39 055898084
sales@bemiva.it, www.bemiva.it

COLORIFIC MONOFIL GMBH

F. W. Raiffeisenstraße 17 – 52531 Übach Palenberg – Germany
T +49 (0)24516709596, F +49 (0)245167098
info@colorific-monofil.de, www.colorific-monofil.de

DI.VÈ S.P.A.

Via Papa Giovanni XXIII 94 – 13882 Vergnasco-Cerrione (BI) – Italy
T +39 0152583057, F +39 0152583900
dive@filatidive.it, www.filatidive.com

IGEA S.P.A.

Via Pollative 119/L – 59100 Prato (FI) – Italy
T +39 05745181, F +39 0574621749
igea@igeayarn.it, www.igeayarn.it

ITESSA INDUSTRIAL TEXTILES DE SUD-AMERICA S.A.C.

Av. Separadora Industrial 2583
Urb. Santa Raquel Ate – Lima – Peru
T +51 3489292, F +51 3482726
sales@itessa.com.pe, www.itessa.com.pe

LINEAPIÙ S.P.A.

Via Brunelleschi 6/F – 50010 Capalle (FI) – Italy
T +39 05589561, F +39 0558956568
gruppolineapiu@lineapiu.com, www.lineapiuitalia.com

MANIFATTURA SESIA S.R.L.

Via Tosalli 67/69 – 28073 Fara Novarese (NO) – Italy
T +39 0321819984, F +39 0321819985
sales@mansesia.it, www.mansesia.it

NEW MILL (FASHION MILL)

Via Udine 90 – Cas. Post. 198 – 59013 Montemurlo (PO) – Italy
T +39 057468161, F +39 0574682738
info@fashionmill.it, www.newmill.it

W. ZIMMERMANN GMBH & CO. KG

Riederstraße 7 – 88171 Weiler-Simmerberg – Germany
T +49 (0)838792120, F +49 (0)8387921242
info@zimsi.com, www.zimmermann-garne.de

ZEGNA BARUFFA LANE BORGOSIESA S.P.A.

Via Milano 160 – 13856 Vigliano Biellese (BI) – Italy
T +39 0157001, F +39 015700252
baruffa@baruffa.com, www.baruffa.com

AMF S.P.A

Via B. Sacchi 54-58 – 36061 Bassano del Grappa (VI) – Italy
T +39 04248808
info@amfsnaps.com, www.amfsnaps.com

GEWAND

Elisabeth Oechsle – Vogelsangstraße 31 – 70176 Stuttgart – Germany
T/F +49 (0)7116157842
info@gewand-stuttgart.de, www.gewand-stuttgart.de

TEXTIL REHM

Von Wieland Straße 3 – 86643 Rennertshofen – Germany
T/F +49 (0)84341500

STUDENTS

Velia Dietz (1210101 P. 37)
Pina Jax (1210110 P. 19)
Sophie Probst (1210109 P. 15)
Sarah Wendler (1210103 P. 8/9)

PROJECT PARTNERS

STAATLICHE
AKADEMIE DER
BILDENDEN KÜNSTE
STUTT GART



STOLL
KNIT AHEAD

LOCATION

Wilhelma
The Zoological and Botanical Garden
Wilhelma 13, 70376 Stuttgart
www.wilhelma.de

EDITORIAL DEPARTEMENT Fashion & Technology *ART DIRECTION & GRAPHIC DESIGN* ssawstudio.com
PHOTOGRAPHY rafaalkroetz.de *HAIR & MAKEUP* raheltaeubert.com *MODEL* Thea Stratton © NEXT London
PRE-PRESS timeray.de *PRINTING* leibfarth-schwarz.de

©2012 STOLL GMBH & CO. KG