

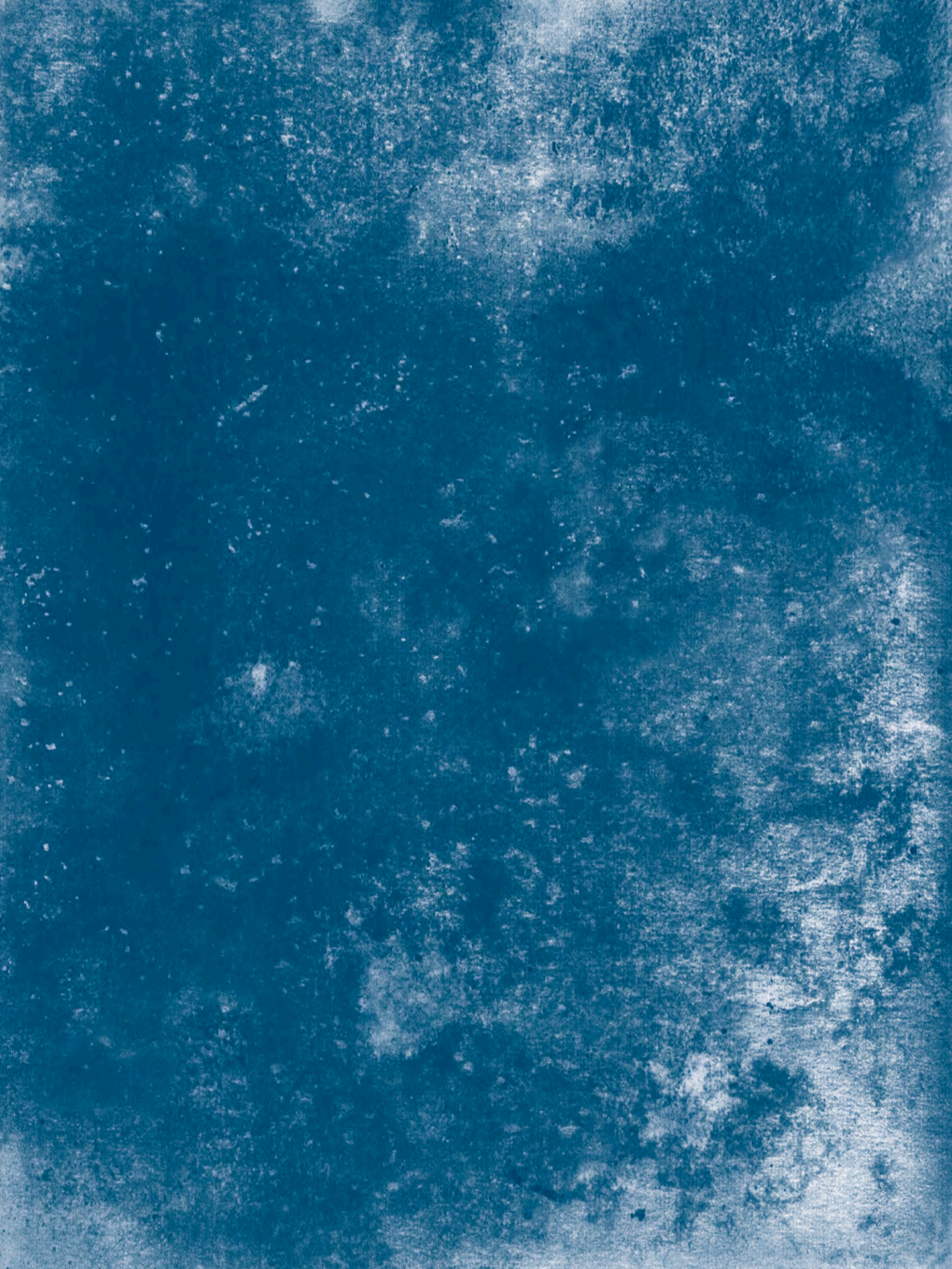
STOLL

DENIM

COLLECTION

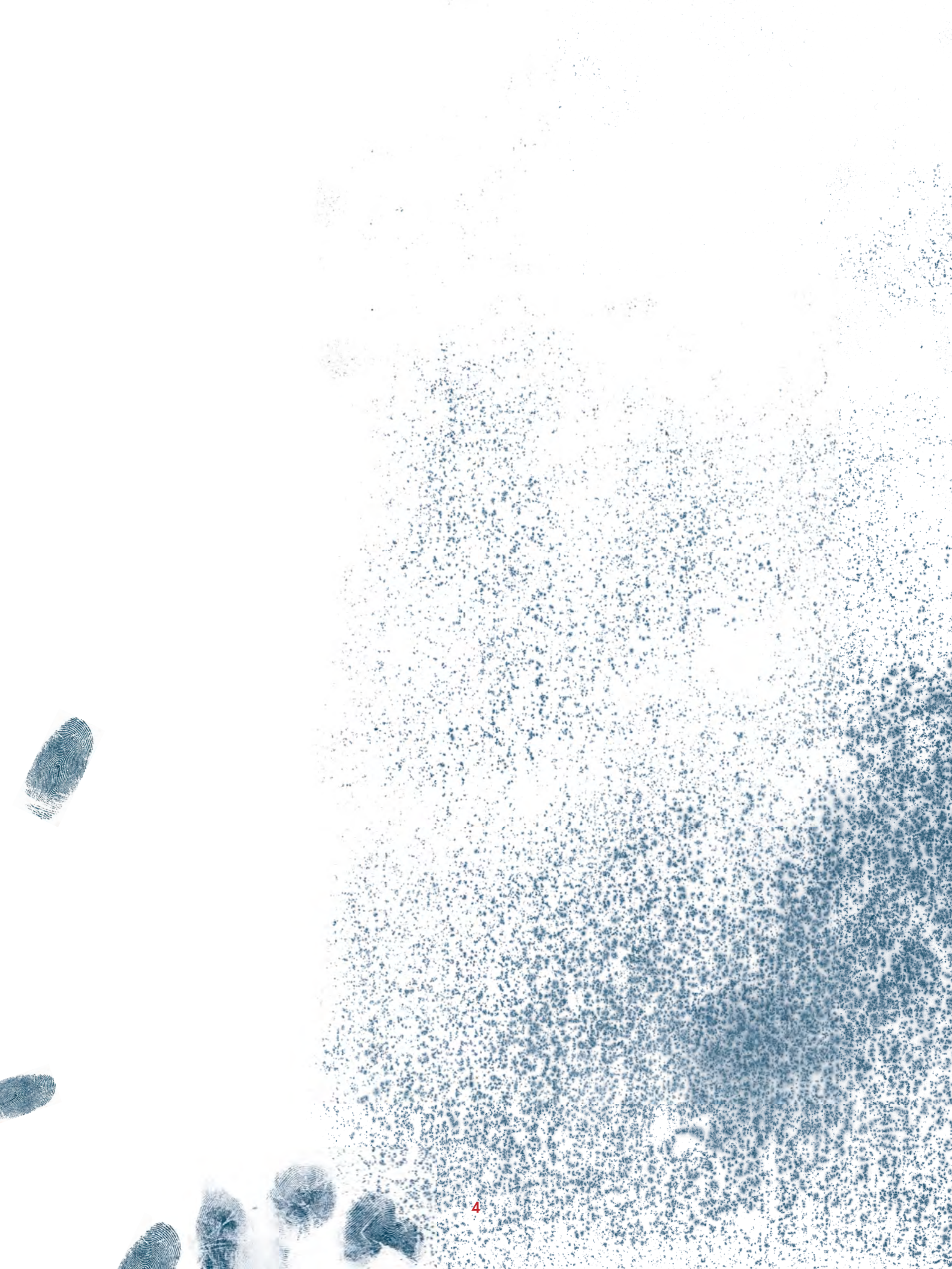
SS14







# **STOLL-DENIM A VISION**





# D E N I M

DENIM\*  
{Serge de Nimes}

Löb »Levi« Strauss, inventor of jeans, was born on February 26, 1829, in the Franconian located Buttenheim (Germany). At the age of 18, he emigrated with his family first to New York and a few years later to America's West Coast where he opened a store for dry goods. He supplied miners in the days of the goldrush with heavy indigo denim workwear trousers. That was the birth of denim wear.

Movie icons like James Dean and Marilyn Monroe gave jeans their popular momentum. Nowadays, denim has become a nonconformist uniform. Either the wearer turns it into an individualistic garment by naturally wearing it off or the industry provides already authentic vintage looks imitating the signs of wear. The latter applies when raw denim goes through a process chain of manual mechanical strain or other treatments like washing, staining or bleaching.

The current Stoll-Denim Collection shows a selection of the almost unlimited potential in knitting.

Our cutting edge flat knitting technology offers a wide range of innovation for the design and manufacturing of denim looks. Our partnership with Unitin Industrias Morera S.A., Spain and CHT R. Beitlich, Germany, has contributed to the success of the pieces made with indigo-dyed cotton.

As flat knitted fabrics are sensitive to mechanical strain, the traditional method of distressed looks cannot be applied on knits as drop stitches would occur. Thus, the distressed look of our knits is the result of software programs automating the worn-out look directly on to the machine.

The innovation above is not just an aesthetic design feature but contributes to economic, social and ecological advantages, as water consumption and manual labor can be significantly reduced.

Here we find our motivation to come up with new solutions and innovations for our coming collection. Get inspired!

\* The fabric used in the manufacture of jeans was woven for the first time in the French town of »Nimes«.









**1310018**  
**CMS ADF-3**  
**E 7.2**

Fully Fashion denim pullover in plated rice grain structure with 1x1 rib cuffs, gored bordure with stripes in float jacquard, horizontal breast insert with fringes and letters in 2-colour transfer float jacquard, Fair Isle collar in Stoll-knit and wear<sup>®</sup> knitted on CMS 822 HP multi gauge, E 7.2, worn-out effects achieved by knitting technique and wash treatments (by CHT R. Beitlich GmbH)





**1310018**  
**CMS ADF-3**  
**E 7.2**

Fully Fashion denim pullover in plated rice grain structure with 1x1 rib cuffs, gored bordure with stripes in float jacquard, horizontal breast insert with fringes and letters in 2-colour transfer float jacquard, Fair Isle collar in Stoll-knit and wear® knitted on CMS 822 HP multi gauge, E 7.2, worn-out effects achieved by knitting technique and wash treatments (by CHT R. Beitlich GmbH)





1210177  
**CMS ADF-3**  
E 7.2

STOLL-MULTI GAUGES®

Fully Fashion dress with herringbone start in plated 1x1 jersey block stripes with thread dégradé in combination with different twisted yarns (Nm 50/3, Nm 100/2), vertical fringes by using Contrary Yarn Carrier Shifting between two systems in a single stroke









1210177  
CMS ADF-3  
E 7.2

STOLL-MULTI GAUGES®

Fully Fashion dress with herringbone start in plated 1x1 jersey block stripes with thread degrade in combination with different twisted yarns (Nm 50/3, Nm 100/2), vertical fringes by using Contrary Yarn Carrier Shifting between two systems in a single stroke





1310026  
**CMS ADF-3**  
E 7.2

STOLL-MULTI GAUGES®

Fully Fashion jeggings in 2-colour transfer jacquard structure with imitated twisted side seams in 2-colour float jacquard, intarsia backside inserts in coarse gauge, herringbone cuffs and linked-off elastic waist, worn-out look achieved by wash treatments (by CHT R. Beitlich GmbH)



1210191  
CMS 822 HP KNIT&WEAR  
E 7.2

STOLL-KNIT AND WEAR®

jeggings in 2-colour float jacquard with 1x1 tubular  
start at the legs and linked-off 2x2 rib elastic  
waist, worn-out effects achieved by controlled  
ladders and 3 different wash treatments  
(by CHT R. Beitlich GmbH)











1210195  
**CMS 822 HP KNIT&WEAR**  
E 7.2

STOLL-KNIT AND WEAR®  
jersey hot pants with imitated seams and back  
pocket in plain stitches, linked-off 2x2 rib elastic  
waistband, worn-out look achieved by wash  
treatments (by CHT R. Beitlich GmbH)





1310025  
CMS ADF-3  
E 8.2, E 7.2

STOLL-MULTI GAUGES®

sleeveless Fully Fashion jersey dress with knitted-on button panel and linked-on 2-colour structured trim, vertical intarsia ornamental seams, tapered waist in 2x2 rib half-tubular structure, semicircular gored leg inserts (E 7.2), back cross seam with cast-off technique





1210169  
**CMS 530 HP MULTI GAUGE**  
E7.2

STOLL-DEVORÉ KNIT®  
plated Fully Fashion jersey T-shirt, button panel  
with floats at front and intarsia-devoré skull motif  
at back, controlled ladders in hem parts





1310031  
CMS ADF-3  
E 7.2

STOLL-MULTI GAUGES®

Fully Fashion jersey denim slipover with coarse 2x2 rib waistband and neck trimming, deep V-neck, gore inserts, armhole intarsia trimmings in 2-colour float jacquard transfer structure and holding stitches, worn-out effects achieved by knitting technique and wash treatments (by CHT R. Beitzlich GmbH)













**1310024**  
**CMS ADF-3**  
**E 7.2**

STOLL-MULTI GAUGES®

Fully Fashion denim bermuda in 2-colour float jacquard transfer structure, gore inserts with holding stitches, linked-on back pockets, side pockets with reinforced pocket mouth, cuffs and waistband in coarse 2x2 rib-tubular, waistband linked-off, worn-out effects achieved by knitting technique and wash treatments  
(by CHT R. Beitlich GmbH)






1310029  
**CMS ADF-3**  
E 8.2

Fully Fashion pullover knitted in one piece in 2-colour cross-tubular pointelle structure with V-neck and back slit, face side with all needles, rear in 1x1, overlapping 2x1 rib waistband in different heights, sleeve hem with drawstring waist









1210197  
**CMS 822 HP KNIT&WEAR**  
E 7.2

STOLL-KNIT AND WEAR®  
jersey top with French shoulder, gored Aran neckline with curled edge and stitch darning, worn-out effects achieved by controlled ladders and wash treatments (by CHT R. Beitlich GmbH)

1210191  
**CMS 822 HP KNIT&WEAR**  
E 7.2

STOLL-KNIT AND WEAR®  
jeggins in 2-colour float jacquard with 1x1 tubular start at the legs and linked-off 2x2 rib elastic waistband, worn-out effects achieved by controlled ladders and 3 different wash treatments (by CHT R. Beitlich GmbH)





1210167  
**CMS 530 HP MULTI GAUGE**  
E 3,5.2

Fully Fashion cardigan with saddle shoulder in plated 1x1 jersey with ornamental stitches and back cross seam with holding stitches, worn-out effects achieved by special mending technique

1310027  
**CMS ADF-3**  
E 7.2

Fully Fashion tunic in 1x1 jersey crepe structure with cast-off technique, intarsia fancy floral motif made by cross stitches










1210178  
CMS ADF-3  
E 7.2

Fully Fashion intarsia pullover with 26 yarn carriers, 2x1 rib Selective Plated Intarsia cuffs, intarsia plated diamond pattern with stripes, partially using Inverse Plating (by Contrary Yarn Carrier Shifting between two systems in a single stroke), striped breast insert with button panel and linked-on 2-colour structured trim









**1210178**  
**CMS ADF-3**  
**E 7.2**

Fully Fashion intarsia pullover with 26 yarn carriers; 2x1 rib Selective Plated Intarsia cuffs, intarsia plated diamond pattern with stripes, partially using Inverse Plating (by Contrary Yarn Carrier Shifting between two systems in a single stroke), striped breast insert with button panel and linked-on 2-colour structured trim

**1310028**  
**CMS ADF-3**  
**E 8.2**

Fully Fashion jersey shirt dress, made up across the knitting direction, breast part gathering by 1x1 jersey and cross stitch with elastic thread, sleeve cuffs with imitated side seams, worn-out look achieved by wash treatments (by CHT R. Beitlich GmbH)









1210226  
**CMS 530 HP MULTI GAUGE**  
**E 3,5.2**

jersey bikini top in 1x1 technique with edges and  
knitted on tapes in purl stitch, worn-out look by  
wash treatments (by CHT R. Beitlich GmbH)






1310030  
CMS ADF-3  
E 7.2

Fully Fashion denim waistcoat in 1x1 rib tuck structure with imitated seams, intarsia zipper panel connected to body with floats, sewn-on chest pockets, worn-out effects achieved by knitting technique and wash treatments (by CHT R. Beitlich GmbH)





**1210227**  
**CMS 530 HP**  
**E 3,5.2**

plated jersey waistcoat, back part shaped by Fair Isle with armhole slits in rice grain structure, differently placed ornamental stitches, edges in 3x2 ribs, worn-out effects achieved by intarsia mending and controlled ladders



**1210227**  
**CMS 530 HP**  
**E 3,5.2**

plated jersey waistcoat, back part shaped by Fair Isle with armhole slits in rice grain structure, differently placed ornamental stitches, edges in 3x2 ribs, worn-out effects achieved by intarsia mending and controlled ladders







# DETAILS



1310018  
Page 7/8







1210177  
Page 9/11



1310026  
Page 12



1210169  
Page 16/17







1310025  
Page 16/17



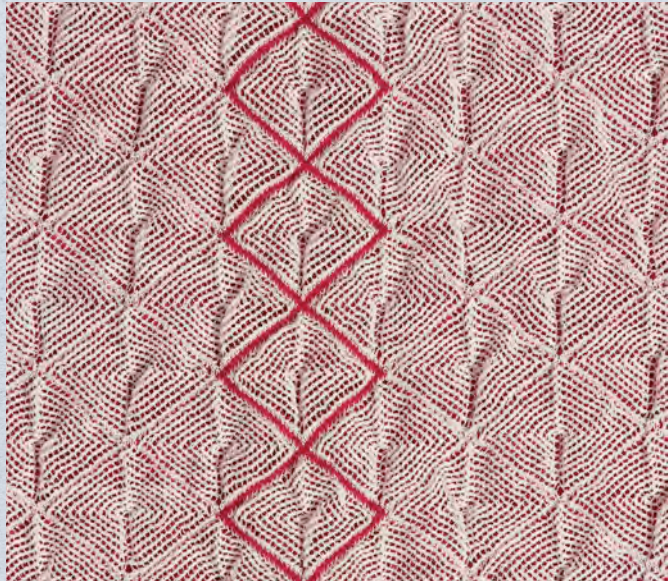
1310031  
Page 18/19







1310024  
Page 20/21



1310029  
Page 22/23



1210197  
Page 24







1210167  
Page 25



1310027  
Page 25



1310028  
Page 29



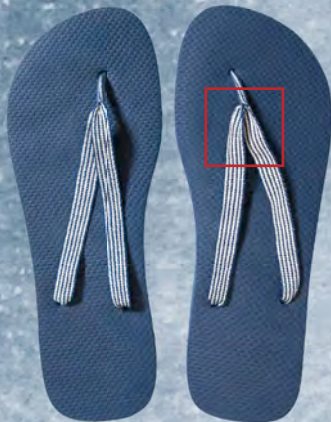




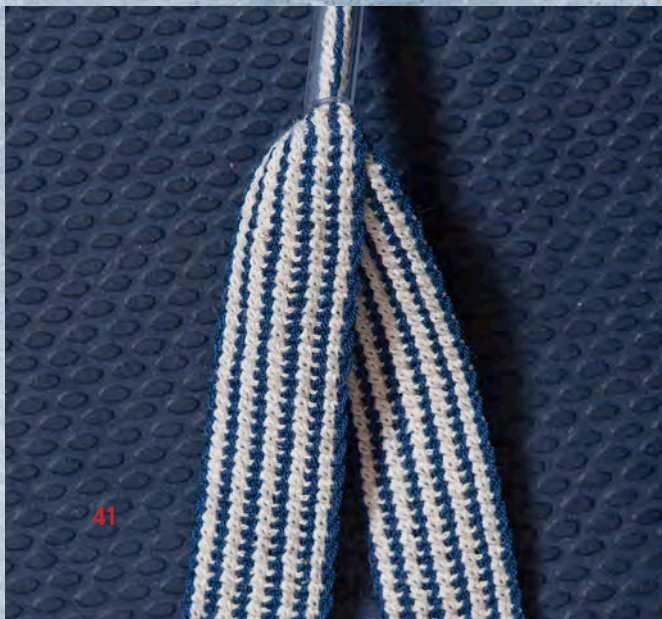
1310030  
Page 32



1210227  
Page 33/34



1310032





# YARN DETAILS

Page	N°	Yarn Details
6/7	1310018	Filpucci: Goffrè, Nm 43 (75% CO, 25% PA) Unitin: Indigo Yarn 11, Nm 50/2, Nm 35/2 (100% CO) Igea: Lotus, Nm 18 (90% CO, 10% LI)
8	1310018	Filpucci: Goffrè, Nm 43 (75% CO, 25% PA) Unitin: Indigo Yarn 11, Nm 50/2, Nm 35/2 (100% CO) Igea: Lotus, Nm 18 (90% CO, 10% LI)
9	1210177	Sesia: Sottile, Nm 100/2 (100% CO) Gebrüder Otto: kbA Baumwolle, Nm 50/3 (100% CO)
10/11	1210177	Sesia: Sottile, Nm 100/2 (100% CO) Gebrüder Otto: kbA Baumwolle, Nm 50/3 (100% CO)
12	1310026	Unitin: Indigo Yarn 11, Nm 35/2 (100% CO) Sesia: Jump, Nm 25 (68% VI, 32% PBT) Zimmermann: 6350N (67,5% PA, 32,5% EA)
13	1210191	Unitin: Indigo Yarn 20, Nm 35/2 (100% CO) Sesia: Jump, Nm 25 (68% VI, 32% PBT) Sesia: Jeans, Nm 50/3 (100% CO) Zimmermann: 3772X (82,6% PA, 17,4% EA)
14/15	1210195	Unitin: Indigo Yarn 14, Nm 35/2 (100% CO) Zimmermann: 6350N (67,5% PA, 32,5% EA)
16/17	1210169	Sesia: Sottile, Nm 100/2 (100% CO) Hasegawa: Mulberry212, Nm 570/2 (100% SE) Be.Mi.Va.: Audrey, Nm 44 (72% CO, 18% LI, 10% PA) Filmar: Osiride, Nm 28/4 (100% CO) Unitin: Indigo Yarn Red, Nm 12/2 (100% CO)
16/17	1310025	Sesia: Jump, Nm 25 (68% VI, 32% PBT) Filmar: Osiride, Nm 28/4 (100% CO) Unitin: Indigo Yarn Red, Nm 12/2 (100% CO) Sesia: Denver, Nm 50/3 (100% CO)
18/19	1310031	Unitin: Indigo Yarn 11, Nm 35/2, Nm 50/2 (100% CO) Igea: Lotus, Nm 18 (90% CO, 10% LI) Igea: Fluid, Nm 6 (40% CO, 30% LI, 30% PC) Filmar: Osiride, Nm 28/4 (100% CO) Unitin: Indigo Yarn Red, Nm 12/2 (100% CO)
20/21	1310024	Unitin: Indigo Yarn 20, Nm 35/2 (100% CO) Igea: Lotus, Nm 18 (90% CO, 10% LI) Filmar: Osiride, Nm 28/4 (100% CO)
22/23	1310029	Filpucci: Goffrè, Nm 43 (75% CO, 25% PA)
24	1210197	Unitin: Indigo Yarn 20, Nm 35/2 (100% CO) Sesia: Jump, Nm 25 (68% VI, 32% PBT) Sesia: Jeans, Nm 50/3 (100% CO)
24	1210191	Unitin: Indigo Yarn 20, Nm 35/2 (100% CO) Sesia: Jump, Nm 25 (68% VI, 32% PBT) Sesia: Jeans, Nm 50/3 (100% CO) Zimmermann: 3772X (82,6% PA, 17,4% EA)
25	1210167	C.T.F.: Gabillino, Nm 2,8 (78% LI, 22% PA) Gebrüder Otto: kbA Baumwolle, Nm 50/3 (100% CO) Filmar: Osiride, Nm 28/4 (100% CO)
25	1310027	C.T.F.: Skarikato/2, Nm 28/2 (100% LI)
26/27	1210178	Igea: Lotus, Nm 18 (90% CO, 10% LI) Sesia: Sottile, Nm 100/2 (100% CO)
29	1210178	Igea: Lotus, Nm 18 (90% CO, 10% LI) Sesia: Sottile, Nm 100/2 (100% CO)
29	1310028	Unitin: Indigo Yarn 14, Nm 50/2 (100% CO) Grignasco: Flag, Nm 20 (88% VI, 12% PBT)
30/31	1210226	Filartex: Jeansella, Nm 2,5 (100% CO) Zimmermann: 6350N (67,5% PA, 32,5% EA)
32	1310030	Igea: Lotus, Nm 18 (90% CO, 10% LI) Unitin: Indigo Yarn 11, Nm 35/2 (100% CO)
33	1210227	C.T.F.: Skarikato/2, Nm 28/2 (100% LI) C.T.F.: Biakka, Nm 3,1 (90% LI, 10% VI) Sesia: Folie, Nm 5,25 (85% PES, 15% CO) Sesia: Jeans, Nm 50/3 (100% CO)
34/35	1210227	C.T.F.: Skarikato/2, Nm 28/2 (100% LI) C.T.F.: Biakka, Nm 3,1 (90% LI, 10% VI) Sesia: Folie, Nm 5,25 (85% PES, 15% CO) Sesia: Jeans, Nm 50/3 (100% CO)
41	1310032	Sesia: Jump, Nm 25 (68% VI, 32% PBT) Be.Mi.Va.: Audrey, Nm 44 (72% CO, 18% LI, 10% PA)



# CREDITS

## ACKNOWLEDGEMENT

We would like to gratefully acknowledge the partnership with:

**CHT R. BEITLICH GMBH**

**UNITIN® INDUSTRIAS MORERA S.A.**

**PRYM FASHION GMBH**

who helped us with their experimental set-up and general advise of manufacturing and treatment of indigo dyed yarns. Further we want to acknowledge the support given by their employees who contributed to this project which was vital for its success.

Jörg Hartmann  
Head of Fashion & Technology

### **CHT R. BEITLICH GMBH/BEZEMA GROUP**

Bismarkstraße 102 - 72072 Tübingen - Germany  
T +49 (0)70711540, F +49 (0)7071154290  
info@cht.com, www.cht.com



### **UNITIN® INDUSTRIAS MORERA S.A.**

Consejo de Cientor 391 - 08009 Barcelona - Spain  
T +34 934881910, F +34 934874703  
info@unitin.com, www.unitin.com



### **PRYM FASHION GMBH**

Zweifaller Straße 130 - 52224 Stolberg - Germany  
T +49 (0)24021405, F +49 (0)2402142901  
www.prym-fashion.de



### **OUTFITS STYLED WITH:**

ALL SAINTS - ABERCROMBIE & FITCH  
CONVERSE - COS - DIESEL - FALKE - G-STAR  
H&M - HILFIGER DENIM - HOLLISTER - LEVI'S  
URBAN OUTFITTERS - WEEKDAY - ZARA



# ADDRESSES

## YARN MANUFACTURERS

### **FILATI BE.MI.VA. S.P.A**

Via Mugellese 115 - 50010 Capalle (FI) - Italy  
T +39 055898261, F +39 055898084  
sales@bemiva.it, www.bemiva.it

### **C.T.F. S.R.L**

Via Labriola 260 - 59013 Montemurlo (PO) - Italy  
T +39 0574 556280, F +39 0574 720393  
ctf@compagniatessile.it

### **FILARTEX S.P.A.**

Via Firenze 13 - 25036 Palazzolo S/O (BS) - Italy  
T +39 0307401612, F +39 0307401661  
yarns@filartex.it, www.filartex.it

### **FILMAR S.P.A.**

Via De Gasperi 65 - 25030 Zocco d'Erbusco (BS) - Italy  
T +39 030776700, F +39 0307760123  
filmar@filmar.it, www.filmar.it

### **FILPUCCI S.P.A.**

Via Dei Tigli 41 - 50010 Capalle (FI) - Italy  
T +39 05589871, F +39 0558969382  
filpucci@filpucci.it, www.filpucci.it

### **GEBRÜDER OTTO GMBH & CO.KG**

Königstraße 34 - 89165 Dietenheim - Germany  
T +49 (0)734796060, F +49 (0)7347960660  
info@otto-garne.com, www.otto-garne.com

### **HASEGAWA CORPORATION**

1012 Ohagi Kohibino Azai Ichinomiya City - Aichi 491 0104 - Japan  
T +81 586 51 4318, F +81 586 51 6255  
sales@hsgwc.co.jp, www.hsgwc.co.jp

### **IGEA S.P.A.**

Via Pollative 119 - 59100 Prato (FI) - Italy  
T +39 05745181, F +39 0574621749  
igea@igeayarn.it, www.igeayarn.it

### **MANIFATTURA SESIA S.R.L.**

Via Tosalli 67/69 - 28073 Fara Novarese (NO) - Italy  
T +39 0321819984, F +39 0321819985  
sales@mansesia.it, www.mansesia.it

### **W. ZIMMERMANN GMBH & CO. KG**

Riederstraße 7 - 88171 Weiler-Simmerberg - Germany  
T +49 (0)838792120, F +49 (0)8387921242  
info@zimsi.com, www.zimsi.com

### **UNITIN® INDUSTRIAS MORERA S.A.**

Consejo de Cientor 391 - 08009 Barcelona - Spain  
T +34 934881910, F +34 934874703  
info@unitin.com, www.unitin.com

### **BITZER+SINGLE GMBH**

Schiller Straße 15 - 72459 Albstadt-Ebingen - Germany  
T + 49 (0)743195800, F +49 (0)7431958088  
info@bitzer-single.de, www.bitzer-single.de

### **A.M.F. S.P.A**

Via B. Sacchi 54/58 - 36061 Bassano del Grappa (VI) - Italy  
T +39 04248808  
info@amfsnaps.com, www.amfsnaps.com

### **TEXTIL REHM**

Von Wieland Straße 3 - 86643 Rennertshofen - Germany  
T/F +49 (0)84341500



## **STOLL HEADQUARTER**

### **GERMANY**

H. Stoll GmbH & Co. KG - Stollweg 1 - 72760 Reutlingen  
T +49 (0)71213130, F +49 (0)7121313110  
contact@stoll.com, www.STOLL.com

### **STOLL FASHION & TECHNOLOGY GERMANY**

H. Stoll GmbH & Co. KG - Stollweg 1 - 72760 Reutlingen  
T +49 (0)71213130, F +49 (0)7121313426  
contact@stoll.com, www.STOLL.com

### **STOLL FASHION & TECHNOLOGY CENTER NEW YORK**

250 West 39th Street (Ground Floor) - New York - NY 10018  
T +1 2123983869, F +1 2129217639  
info@stollftny.com, www.stollftny.com

## **STOLL BRANCHES & AGENCIES**

### **FRANCE**

Stoll France  
85-87 Avenue Henri Barbusse - 92140 Clamart  
T +33 141088383, F +33 141088500  
stollfrance@wanadoo.fr

### **ITALY**

Stoll Italia srl.  
Via Dei Maniscalchi 9/A - 41012 Carpi (MO)  
T +39 059651899, F +39 059651870  
stollitalia@stoll.it

### **USA, CANADA**

Stoll America Knitting Machinery, Inc.  
250 West 39th Street (1st Floor) - New York - NY 10018  
T +1 2123983869, F +1 2129217639  
info@stollamerica.com

### **JAPAN**

Stoll Japan Co. Ltd.  
Minato-Ku - Shibaura 4-16-23 - Aquacity Shibaura 9F - JP-Tokyo 108-0023  
T +81 337693690, F +81 337693694  
info@stolljapan.jp

### **INDIA**

Stoll India Pvt. Ptd. - C-25, Sector 63 - 201 301 Noida - Uttar Pradesh  
T +91 1204690850/3298033, F +91 1204690851  
contact@stoll-india.com

### **CHINA, HONG KONG, TAIWAN, THAILAND, VIETNAM**

Chemtax (Stoll) Company Limited - 6/FI. Goldsland Building  
22-26 Minden Avenue - Tsim Sha Tsui, Kowloon - Hong Kong  
T +852 23686269, F +852 23687500  
stoll@chemtax.com



Editorial Department: Fashion & Technology  
Art Direction & Graphic Design: SSAWstudio.de  
Photography: rafaelkroetz.de  
Styling: stephaniecanisius.com  
Hair & Makeup: raheltaeubert.com  
Models: Nele Kenzler, Panagiotis Giannas (place models)  
Pre-press: timeray.de  
Printing: scheufele.de

© 2013 Stoll GmbH & Co. KG



[www.STOLL.com](http://www.STOLL.com)



**STOLL**  
KNIT AHEAD