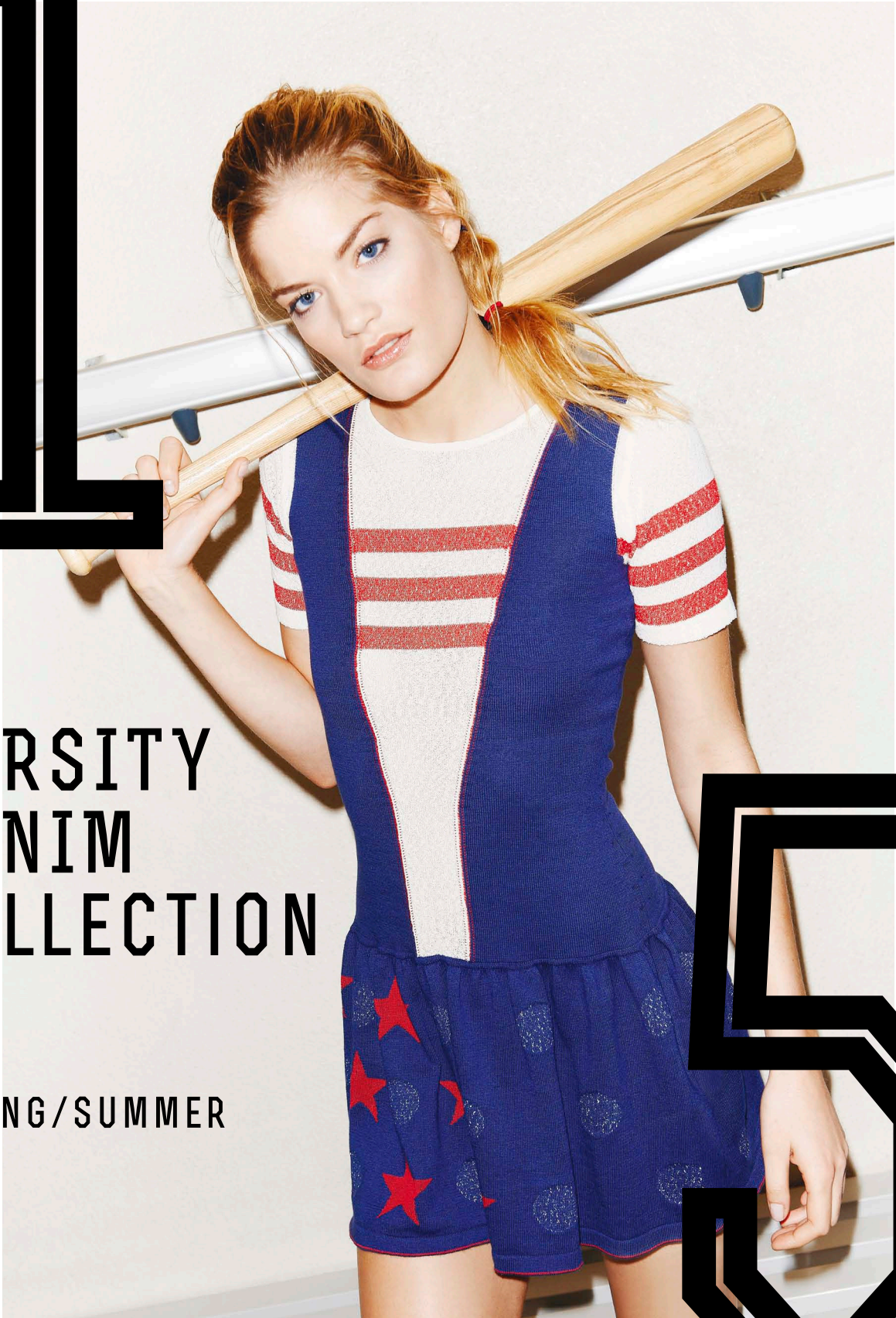


STOLL

1



VARSIITY
DENIM
COLLECTION

SPRING/SUMMER
2015

5





INSPIRATION VARSITY JACKET
VINTAGE MARKET, NEW YORK CITY

3

COVER:

1310181 / CMS ADF-3 MULTI GAUGE / E 7.2

FULLY FASHION INTARSIA CHEERLEADER DRESS WITH
PLATED STRIPES, SKIRT PART WITH SELECTIVE PLATED
MOTIFS, INTARSIA AREAS CONNECTED BY DECORATIVE
STITCHES. WIDENING AND STITCH DARNING USING
CONTRARY YARN CARRIER MOVEMENT. SKIRT-BODY
TRANSITION WITH STITCH DOUBLING.

A VARSITY JACKET,
NEW YORK CITY'S V
SPARKED THE IDEA
TREND COLLECTION.
TEXTURES, GRAPHIC
4 INSPIRED US TO CR
DEDICATED TO CLAS
COLLEGE SPORTSW

THE JACKET ALSO FEATURES THE ICONIC EMBROIDERED LETTER ON ITS SLEEVE. THOSE LETTERS FIRST APPEARED IN CAMBRIDGE, MASSACHUSETTS IN 1865 WHEN THE HARVARD UNIVERSITY'S BASEBALL TEAM PLAYERS WERE GIVEN A JERSEY WITH A BIG 'H'. SINCE THEN, VARSITY JACKETS BECAME A STATUS SYMBOL ON THE AMERICAN COLLEGE CAMPUS AND A SOURCE OF INSPIRATION FOR NUMEROUS FASHION BRANDS AND RECENT CATWALK TRENDS.

THIS TREND COLLECTION CELEBRATES AMERICAN VINTAGE SPORTSWEAR AND DENIM BY RE-CREATING THIS DISTINCT LOOK WITH STOLL'S STATE-OF-THE-ART ADF KNITTING TECHNOLOGY THAT KNITS GRAPHIC SHAPES - LETTERS, NUMBERS, STARS AND STRIPES AT HIGH PRODUCTION SPEED. COTTON PLATED WITH RAYON MAKES THE KNIT HEAVIER AND ADDS TEXTURE AND A SLIGHT GLOSS FOR A MORE FUNCTIONAL LOOK AND FEEL.

FOUND AT ONE OF
INTAGE MARKETS
FOR OUR S/S 15
WITH ITS COLOURS,
S AND DETAILS IT
EATS A COLLECTION 5
SIC AMERICAN
EAR.

A HISTORICAL EARLY 20TH CENTURY GYMNASIUM IN PFULLINGEN (SOUTH GERMANY) WAS THE LOCATION FOR OUR SHOOTING, JUST A FEW MILES FROM THE STOLL HEAD OFFICE IN REUTLINGEN. IT IS STILL IN USE BY A NEARBY SCHOOL AND ITS ORIGINAL INTERIOR MIXES BEAUTIFULLY WITH MODERN SPORTS EQUIPMENT.

WE HOPE YOU FEEL INSPIRED AND SHARE OUR EXCITEMENT FOR THIS COLLECTION - AND DON'T FORGET TO CHECK OUR ONLINE PATTERN DATABASE FOR MORE INNOVATIVE KNITTING IDEAS!

JÖRG HARTMANN

HEAD OF STOLL FASHION & TECHNOLOGY

6

1410032 / CMS 530 HP MULTI GAUGE / E 7.2

STOLL-MULTI GAUGES®

STOLL-APPLICATIONS®

STOLL-FLEXIBLE GAUGE®

FULLY FASHION PLATED JERSEY COLLEGE STYLE

CARDIGAN WITH RAGLAN CUT, INSET POCKETS.

SLEEVES WITH IMITATED SEW ON INTARSIA
PATCHES WORKED IN 3-COLOUR RELIEF JACQUARD.



7

1410058 / CMS ADF-3 / E 16
INVERSE PLATED FULLY FASHION BASEBALL
TOP WITH POINTELLE STRUCTURE.





9

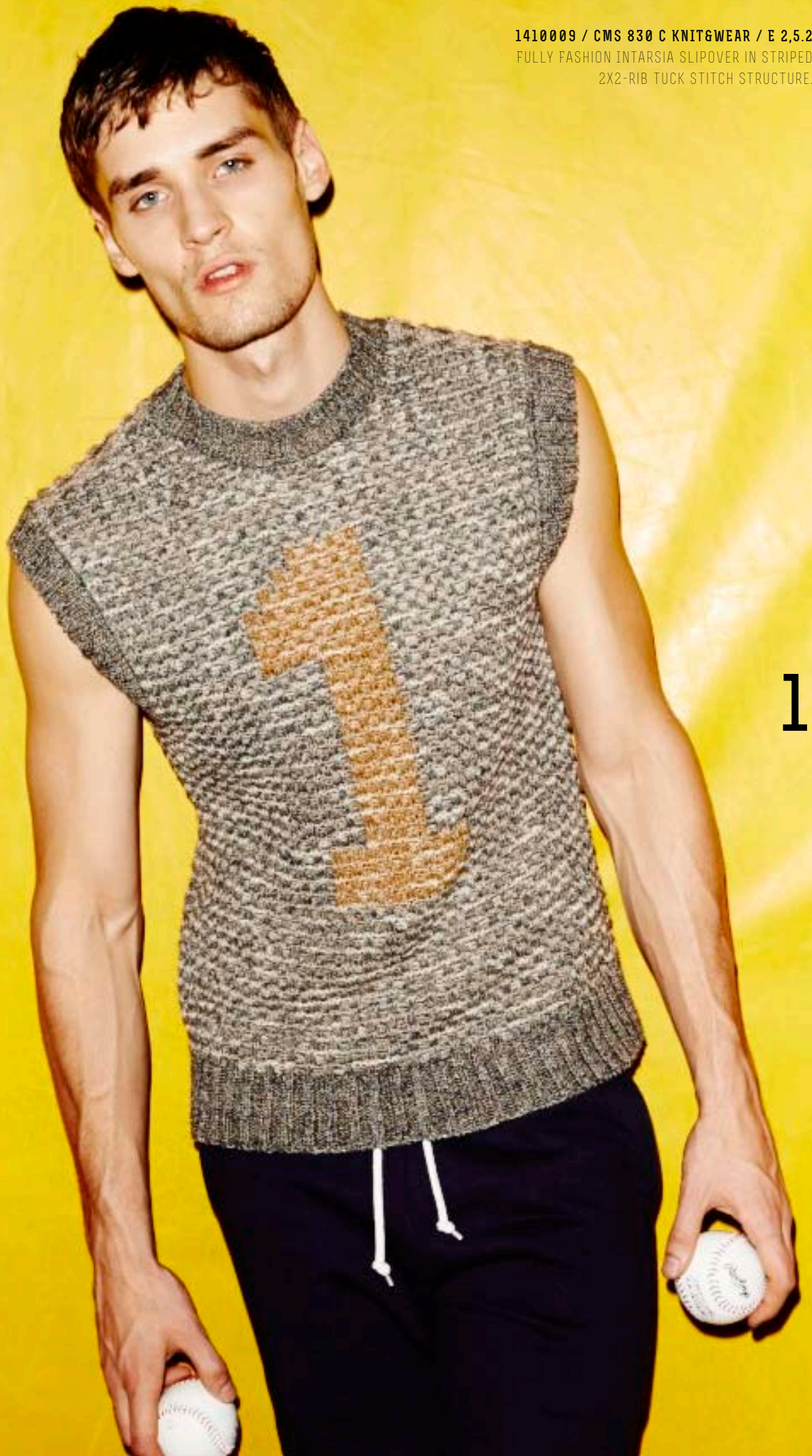
1310227 / CMS 502 HP MULTI GAUGE / E 3.5.2
FULLY FASHION JERSEY PULLOVER WITH
SET-IN SLEEVES AND POINTELLE DIAMOND MOTIF,
KNITTED WITHOUT EMPTY ROWS.

1310183 / CMS 530 HP MULTI GAUGE / E 7.2
UNISEX FULLY FASHION T-SHIRT IN TUCK-PIQUÉ
WITH DIFFERENT POINTELLE STRUCTURES AND
PLATED TUBULAR START.

10



1410009 / CMS 830 C KNIT&WEAR / E 2.5.2
FULLY FASHION INTARSIA SLIPOVER IN STRIPED
2X2-RIB TUCK STITCH STRUCTURE.



11

1410009 / CMS 830 C KNIT&WEAR / E 2,5.2
FULLY FASHION INTARSIA SLIPOVER IN STRIPED
2X2-RIB TUCK STITCH STRUCTURE.

12





13

1310215 / CMS 530 HP MULTI GAUGE / E 8.2
FULLY FASHION DRAWSTRING JOGGING TROUSERS,
KNITTED UPSIDE DOWN, IN LYCRA PLATED 1X1 ALTERNATE
JERSEY STRUCTURE WITH PATCH POCKETS AND FAIR ISLE
NARROWED TUBULAR LEG HEMS.

14



16



1310180 / CMS 530 HP MULTI GAUGE / E 7.2

STRIPED FULLY FASHION RAGLAN COLLEGE STYLE
PULLOVER IN RICE GRAIN TUCK STITCH STRUCTURE
WITH SLEEVE INTARSIA LOGO. STRIPES AND LOGO
IN 3-COLOUR JACQUARD TUBULAR-TUCK STITCH
STRUCTURE. CUFFS IN FULL CARDIGAN RACK STITCH.



1410043 / CMS 803 HP KNITWEAR / E 7.2
STOLL-KNIT AND WEAR®
FITTED JERSEY PULLOVER WITH FRENCH SHOULDER AND STRIPES.

18





1410053 / CMS 530 HP MULTI GAUGE / E 7.2
STRIPED INTARSIA LEG WARMERS IN PLATED,
COARSE 2X2 RIB WITH KNITTED-ON FOOTSTRAP.

20





21

1410015 / CMS 520 C / E 3

STOLL-FLEXIBLE GAUGE*

STRIPED FULLY FASHION BOLERO JACKET IN GRAIN
STRUCTURE WITH INTARSIA ZIPPER PANEL, INTARSIA
MOTIF ON THE REAR AND CURLED EDGES. INITIAL
ROW IN HAND-KNIT LOOK AND INTARSIA-KNOTS WITH
SPLIT STITCH.



22

1410034 / CMS 530 HP MULTI GAUGE / E 7.2
COLLEGE STYLE SHORTS IN RICE GRAIN STRUCTURE
WITH SEPARATE KNITTED WATCH AND BACK POCKET.
WORN-OUT EFFECT ACHIEVED BY WASHING
TREATMENTS AND PRINTING.



23

24





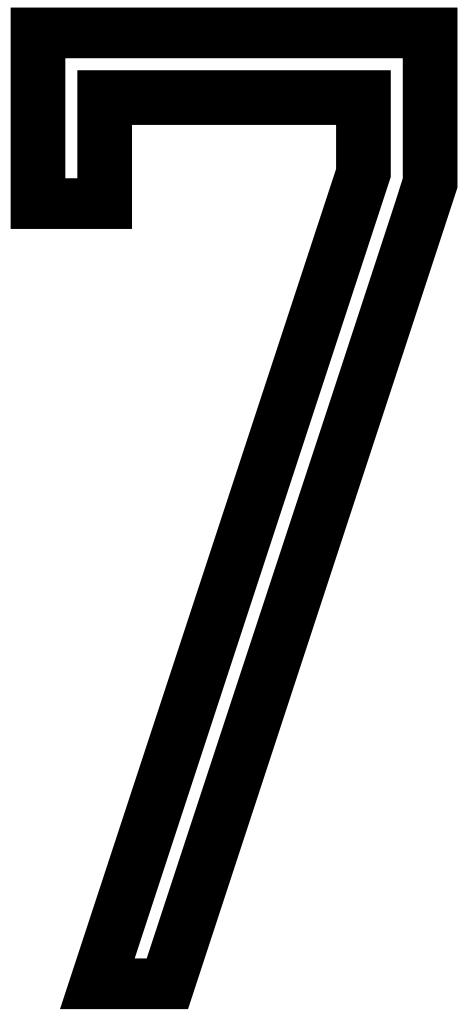
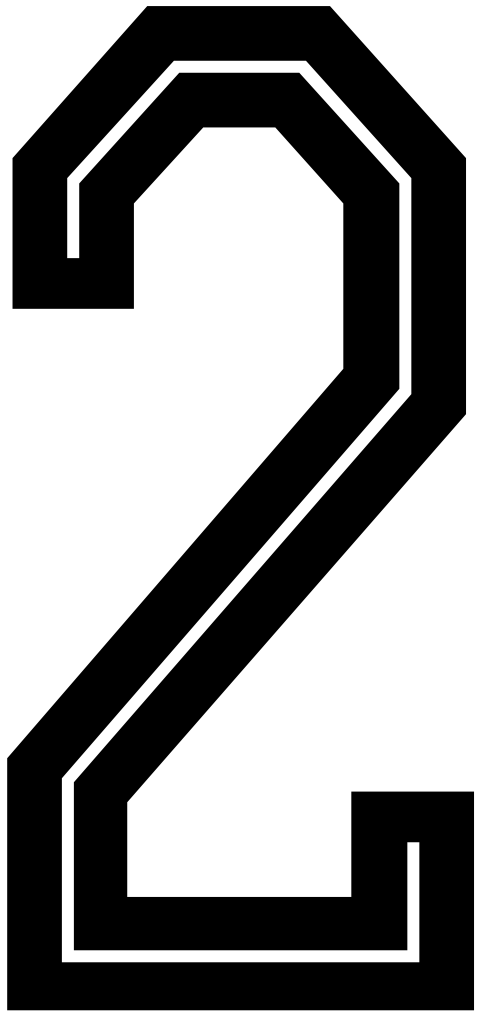
SHOE-UPPER KNITTED WITH ADF-3 TECHNIQUE

1410018 / CMS 502 HP MULTI GAUGE / E 2.5.2 M.4L

FULLY FASHION WAISTCOAT IN PLATED JERSEY WITH
KNITTED-ON BREAST POCKETS AND VERTICAL INTARSIA
STRIPES IN 2-COLOUR FLOAT JACQUARD.

26





28





29

1410003 / CMS 502 HP MULTI GAUGE / E 3,5.2

STOLL-MULTI GAUGES®

STOLL-FLEXIBLE GAUGE®

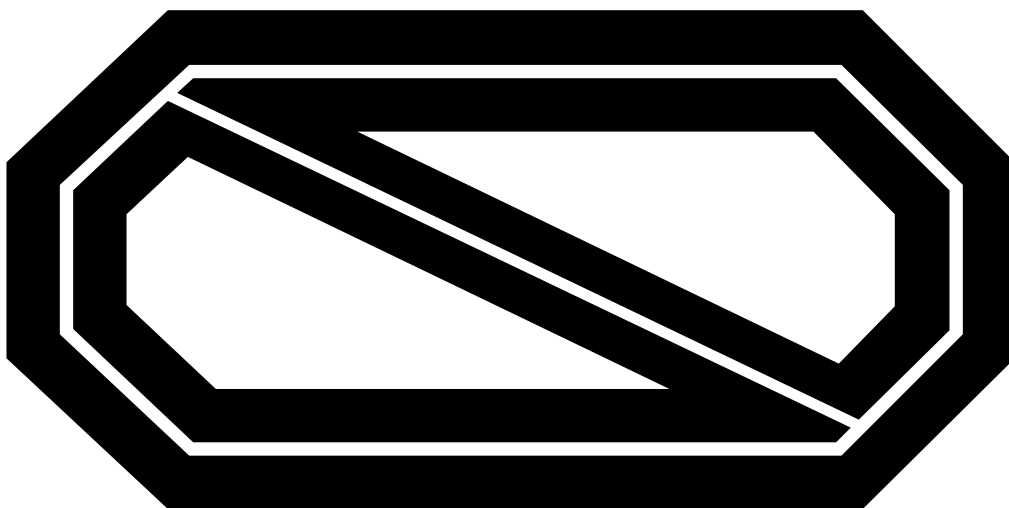
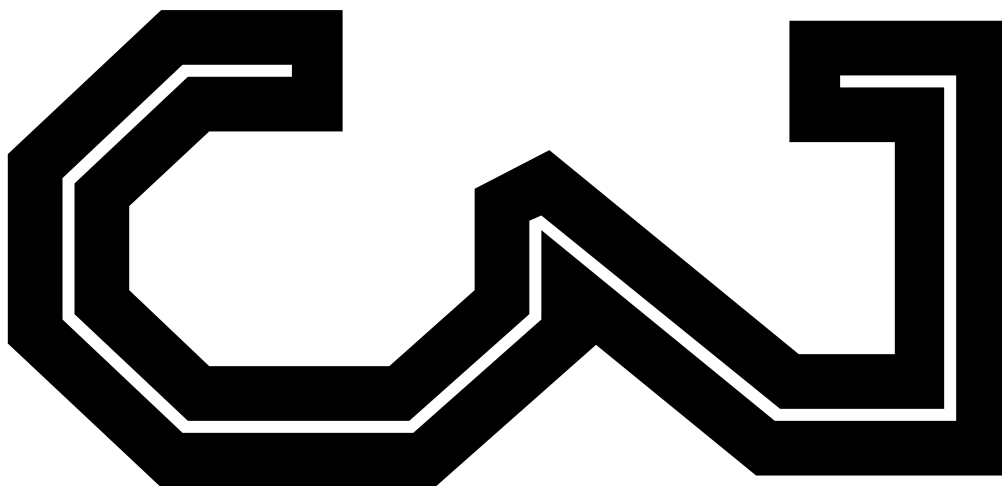
FULLY FASHION CARDIGAN IN PLATED 1X1 POINTELLE
STRUCTURE WITH ALL NEEDLE TUBULAR BUTTON
FACING. NECKLINE SHAPE CREATED BY POINTELLE
STITCH GROUP NARROWING.

1410012 / CMS 530 HP MULTI GAUGE / E 7.2

STOLL-MULTI GAUGES®

STOLL-FLEXIBLE GAUGE®

FULLY FASHION COLLEGE STYLE JACKET WITH RAGLAN CUT,
BREAST EMBLEM AND PATCH POCKETS. 3-COLOUR FLOAT
JACQUARD TARTAN PATTERN INSIDE WITH INTARSIA IN THE
BUTTON PANEL REGION, OUTSIDE IN 1X1 JERSEY, CONNECTED
BY NYLON-YARN INSERTION IN TUCK STITCH STRUCTURE. 1X1
RIB CUFFS KNITTED IN KNIT AND WEAR TECHNIQUE. SLEEVES
WITH 1X1 HALF CARDIGAN RIB AND TUCK STITCH STRUCTURE.





31

1310223 / CMS 530 HP MULTI GAUGE / E 8.2
FULLY FASHION UNDERWEAR CREW NECK T-SHIRT
IN 2X2 RIB TUCK STITCH STRUCTURE WITH MOCK
FLATLOCK SEAMS.

32



1310224 / CMS 502 HP MULTI GAUGE / E 3,5,2
FULLY FASHION PULLOVER WITH FRENCH SHOULDER IN
PLATED 1X1 POINTELLE MESH STRUCTURE, KNITTED
WITHOUT EMPTY ROWS.



33

34

1410021 / CMS ADF-3 / E 16
FULLY FASHION RUGBY POLO SHIRT WITH SELECTIVE
AND INTARSIA PLATED STRIPES, BREAST AND SLEEVE
PATCHES. PLATED BACK PIECE WITH SHOULDER YOKE IN
DIAMOND-MOTIF TUBULAR TRANSFER STRUCTURE.



35

36





37

1310216 / CMS 530 HP MULTI GAUGE / E 8.2
FULLY FASHION JERSEY DENIM DRESS WITH WING SLEEVES,
GORED SHOULDER YOKE WITH KNITTED-ON PIN-TUCKS
WITH PARALLEL RUNNING IMITATED SEAMS. READY-MADE
ACROSS THE KNITTING DIRECTION.

1410080 / CMS ADF-3 MULTI GAUGE / E 7.2
FULLY FASHION PULLOVER WITH FRONT AND SLEEVES
IN PLATED JERSEY, USING 2 YARN CARRIERS,
WITH STRIPED CENTRAL MILANO-RIB, USING THE
SAME YARN CARRIERS SEPARATELY. BACK PART
COMPLETELY IN STRIPED MILANO-RIB. CUFFS IN
DOUBLE JERSEY WITH WAVE PATTERNING.

CMS 530 T2 B / E 14
KNEE BRACE

38





CT
NAL
81
UPS

39

WHITE
EASTERN NO.
2
STATE C

40





41

1410081 / CMS ADF-3 MULTI GAUGE / E 7.2
STOLL-MULTI GAUGES®
FULLY FASHION PULLOVER WITH CUFFS IN
DIFFERENT LENGTH, INTARSIA AREAS CONNECTED
BY DECORATIVE STITCHES.

42

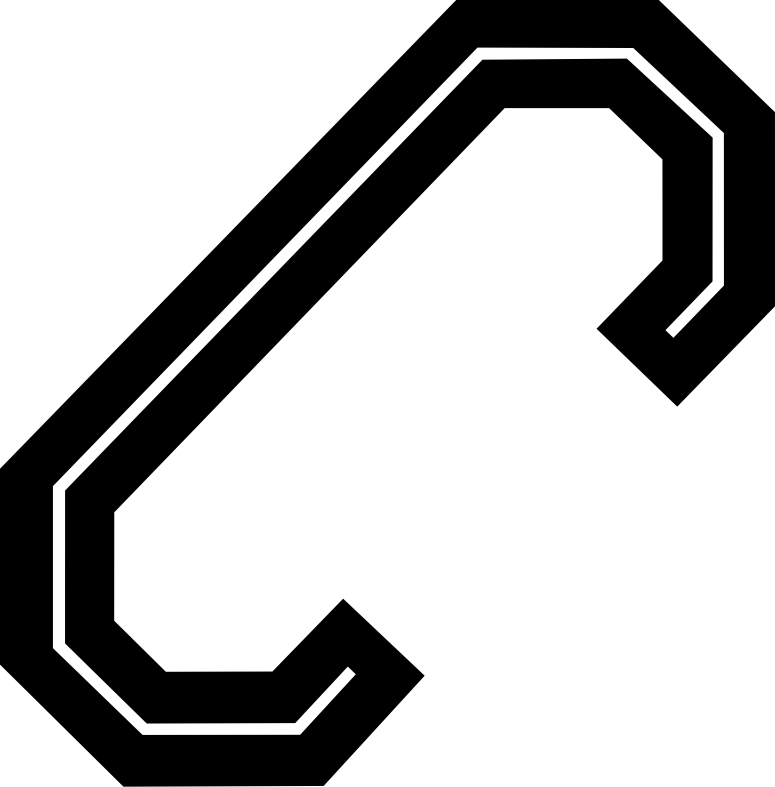


43

1	1310181	GEBRÜDER OTTO: KBA BAUMWOLLE, NM 50/3 (100% CO) ILARIA: ICARIA, NM 22 (65% CO, 35% PA) IGEA: ATHENA, NM 20 (100% VI)	32	1310223	SESIA: SOTTILE, NM 100/2 (100% CO) MARCHI&FILDI: VICTORIA, NM 50/2 (100% CO) GEBRÜDER OTTO: BW GAS. MERC., NM 34/2 (100% CO)
7	1410032	GEBRÜDER OTTO: BAUMWOLLE, NM 28/4 (100% CO) IGEA: ATHENA, NM 20 (100% VI) GEBRÜDER OTTO: KBA BAUMWOLLE, NM 50/3 (100% CO) SESIA: JUMP, NM 25 (68% VI, 32% PBT) LINEAPIÙ: GISELLE, NM 58 (63% VI, 37% PA)	33	1310224	EMILCOTONI: CABLÉ 40, NM 7 (100% CO) SESIA: SOTTILE, NM 100/2 (100% CO)
8	1410058	IGEA: ATHENA, NM 15 (100% VI) EMILCOTONI: YORK, NM 200/2 (100% CO)	35	1410021	IGEA: ATHENA, NM 20 (100% VI) SESIA: SOTTILE, NM 100/2 (100% CO) SESIA: JUMP, NM 25 (68% VI, 32% PBT) GEBRÜDER OTTO: KBA BAUMWOLLE, NM 50/3 (100% CO) C.T.F.: SKARIKATO/2, NM 28/2 (100% LI)
9	1310227	EMILCOTONI: CABLÉ 40, NM 7 (100% CO)	36-37	1310216	UNITIN: INDIGO YARN, NM 50/2 (100% CO) SESIA: JUMP, NM 25 (68% VI, 32% PBT)
10	1310183	SESIA: JUMP, NM 25 (68% VI, 32% PBT) LINEAPIÙ: SAND, NM 58 (87% VI, 13% PA)	39	1410080	GEBRÜDER OTTO: KBA BAUMWOLLE, NM 50/3 (100% CO) IGEA: ATHENA, NM 20 (100% VI) SESIA: JUMP, NM 25 (68% VI, 32% PBT)
11-13	1410009	C.T.F.: BIAKKA, NM 3,1 (90% LI, 10% VI) IGEA: FLUID, NM 6 (40% CO, 30% LI, 30% PC)	40-41	1410081	GEBRÜDER OTTO: BAUMWOLLE, NM 28/4 (100% CO) IGEA: ATHENA, NM 20 (100% VI) C.T.F.: SKARIKATO/2, NM 28/2 (100% LI)
15	1310215	GEBRÜDER OTTO: KBA BAUMWOLLE, NM 50/3 (100% CO) ZIMMERMANN: 8004LU, LYCRA 20 DTEX, PA 78 DTEX (90% PA, 10% EA)			
16-17	1310180	SESIA: JUMP, NM 25 (68% VI, 32% PBT) IGEA: LOTUS, NM 18 (90% CO, 10% LI)			
18	1410043	TVU: OCEAN, NM 34/2 (50% CO, 50% PC) GEBRÜDER OTTO: KBA BAUMWOLLE, NM 50/3 (100% CO)			
19	1410053	IGEA: ATHENA, NM 20 (100% VI) SESIA: JUMP, NM 25 (68% VI, 32% PBT)			
20-21	1410015	BE.MI.VA.: PARK, NM 2,3 (76% CO, 24% PA)			
22-23	1410034	C.T.F.: SKARIKATO/2, NM 28/2 (100% LI) MARCHI&FILDI: VICTORIA, NM 50/2 (100% CO)			
26	1410018	IMA FILATI: RANY 750, NM 13,5 (100% PA) FILMAR: PERLE MICRO, NM 7 (100% CO) NIKOL WEBER: KUNSTBAST SPLEISSGARN, NM 5,3 (100% PP) C.T.F.: SKARIKATO/2, NM 28/2 (100% LI)			
28-29	1410003	EMILCOTONI: CABLÉ 40, NM 7 (100% CO) SESIA: SOTTILE, NM 100/2 (100% CO)			
31	1410012	C.T.F.: SKARIKATO/2, NM 28/2 (100% LI) IGEA: ATHENA, NM 15 (100% VI) UNITIN: INDIGO YARN, NM 50/2 (100% CO) FILMAR: PERLE MICRO, NM 7 (100% CO) GEBRÜDER OTTO: KBA BAUMWOLLE, NM 50/3 (100% CO) NILIT: NYLON 6.6, DTEX 156/96 (100% PA)			



ARNS



REDITS

ACCESSORIES

A.M.F. S.P.A

VIA B. SACCHI 54/58 - 36061 BASSANO DEL GRAPPA (VI) - ITALY
TEL +39 04248808
INFO@AMFSNAPS.COM, WWW.AMFSNAPS.COM

BITZER+SINGLE GMBH

KOHLPLATTENSTRASSE 5 - 72459 ALBSTADT-LAUTLINGEN - GERMANY
TEL +49 (0)743195800, FAX +49 (0)7431958088
INFO@BITZER-SINGLE.DE, WWW.BITZER-SINGLE.DE

PRYM FASHION GMBH

ZWEIFALLER STRASSE 130 - 52224 STOLBERG - GERMANY
TEL +49 (0)24021405, FAX +49 (0)2402142901
INFO@PRYM-FASHION.DE, WWW.PRYM-FASHION.COM

YARNS

FILATI BE.MI.VA. S.P.A

VIA MUGGELLESE 115 - 50010 CAPALLE (FI) - ITALY
TEL +39 055898261, FAX +39 055898084
SALES@BEMIVA.IT, WWW.BEMIVA.IT

C.T.F. S.R.L

VIA LABRIOLA 260 - 59013 MONTEMURLO (PO) - ITALY
TEL +39 0574556280, FAX +39 0574720393
CTF@COMPAGNIATESSILE.IT

EMILCOTONI S.P.A.

VIALE DELL'INDUSTRIA 12 - 29100 PIACENZA (PC) - ITALY
TEL +39 0523606913, FAX +39 0523608054
INFO@EMILCOTONI.IT, WWW.EMILCOTONI.IT

FILMAR S.P.A.

VIA DE GASPERI 65 - 25030 ZOCCO D'ERBUSCO (BS) - ITALY
TEL +39 030776700, FAX +39 0307760123
FILMAR@FILMAR.IT, WWW.FILMAR.IT

GEBRÜDER OTTO

BAUMWOLLFEINZWIERNEREI GMBH & CO. KG
KÖNIGSTRASSE 34 - 89165 DIETENHEIM - GERMANY
TEL +49 (0)73479606231, FAX +49 (0)734796065231
INFO@OTTO-GARNE.COM, WWW.OTTO-GARNE.COM

IGEA S.P.A.

VIA POLLATIVE 119 - 59100 PRATO (FI) - ITALY
TEL +39 057451811, FAX +39 0574621749
IGEA@IGEAYARN.IT, WWW.IGEAYARN.IT

ILARIA MANIFATTURE LANE S.R.L.

VIA PAGANELLE - 50041 CALENZANO (FI) - ITALY
TEL +39 0558876693 - FAX +39 0558879354
INFO@ILARIA.IT, WWW.ILARIA.IT

IMA FILATI

VIA DELL'OLMO 26 - 21018 SESTO CALENDE (VA) - ITALY
TEL +39 0331914101, FAX +39 0331920318
INFO@IMAFILATI.IT, WWW.IMAFILATI.IT

LINEAPIÙ S.P.A.

VIA BRUNELLESCHI 6/F - 50010 CAPALLE (FI) - ITALY
TEL +39 05589561, FAX +39 0558956568
GRUPPOLINEAPIU@LINEAPIU.COM, WWW.LINEAPIUITALIA.COM

MANIFATTURA SESIA S.R.L.

VIA TOSALLI 67/69 - 28073 FARA NOVARESE (NO) - ITALY
TEL +39 0321819984, FAX +39 0321819985
SALES@MANSESIA.IT, WWW.MANSESIA.IT

MARCHI & FILDI S.P.A.

VIA MAESTRI DEL LAVORO 4/A - 13900 BIELLA (BI) - ITALY
TEL +39 0158486200, FAX +39 0158408319
INFO@MARCHIFILDI.COM, WWW.MARCHIFILDI.COM

NIKOL WEBER KG

MÜHLBERG 16 - 95152 SELBITZ - GERMANY
TEL +49 (0)9280 98000, FAX +49 (0)9280 980055
POBOX@NIKOL-WEBER.DE, WWW.NIKOL-WEBER.DE

TVU GARNVERTRIEB GMBH & CO. KG

FRIEDRICH-ENGELS-ALLEE 229 - 42285 WUPPERTAL - GERMANY
TEL +49 (0)20228210, FAX +49 (0)20228211010
GARNE@TVU.DE, WWW.TVU.DE

W. ZIMMERMANN GMBH & CO. KG

RIEDERSTRASSE 7 - 88171 WEILER-SIMMERBERG - GERMANY
TEL +49 (0)838792120, FAX +49 (0)8387921242
INFO@ZIMSI.COM, WWW.ZIMMERMANN-GARNE.DE

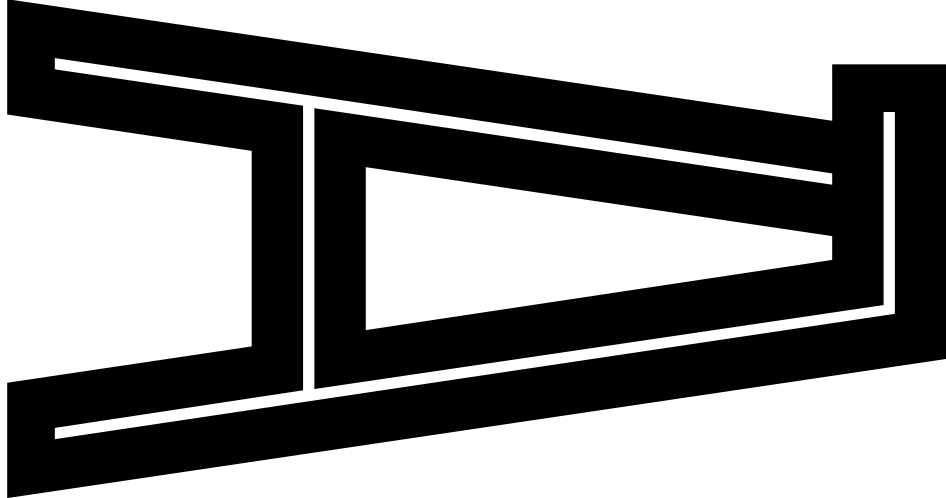
WE WOULD LIKE TO EXPRESS OUR SINCERE APPRECIATION TO UNITIN FOR THEIR OUTSTANDING SUPPORT!

UNITIN® INDUSTRIAS MORERA S.A.

CONSEJO DE CIENTOR 391 - 08009 BARCELONA - SPAIN
TEL +34 934881910, FAX +34 934874703
INFO@UNITIN.COM, WWW.UNITIN.COM

unitin®
INDUSTRIAS MORERA, S.A.

45



STOLL BRANCHES & AGENCIES

FRANCE

STOLL FRANCE
85-87 AVENUE HENRI BARBUSSE - 92140 CLAMART
TEL +33 141088383, FAX +33 141088500
STOLLFRANCE@WANADOO.FR

ITALY

STOLL ITALIA SRL.
VIA DEI MANISCALCHI 9/A - 41012 CARPI (MO)
TEL +39 059651899, FAX +39 059651870
STOLLITALIA@STOLL.IT

USA, CANADA

STOLL AMERICA KNITTING MACHINERY, INC.
250 WEST 39TH STREET (1ST FLOOR) - NEW YORK - NY 10018
TEL +1 2123983869, FAX +1 2129217639
INFO@STOLLAMERICA.COM

JAPAN

STOLL JAPAN CO. LTD.
MINATO-KU - SHIBAURA 4-16-23
AQUACITY SHIBAURA - JP-TOKYO 108-0023
TEL +81 337693690, FAX +81 337693694
INFO@STOLLJAPAN.JP

INDIA

STOLL INDIA PVT. LTD. - C-25, SECTOR 63
201 301 NOIDA - UTTAR PRADESH
TEL +91 1204690850/3298033, FAX +91 1204690851
CONTACT@STOLL-INDIA.COM

CHINA, HONG KONG, TAIWAN, THAILAND, VIETNAM

CHEMTAX (STOLL) COMPANY LIMITED - 6/FL. GOLDSLAND BUILDING
22-26 MINDEN AVENUE - TSIM SHA TSUI, KOWLOON - HONG KONG
TEL +852 23686269, FAX +852 23687500
STOLL@CHEMTAX.COM

ADDRESSES

STOLL HEADQUARTERS

GERMANY

H. STOLL GMBH & CO. KG - STOLLWEG 1 - 72760 REUTLINGEN
TEL +49 (0)71213130, FAX +49 (0)712131110
CONTACT@STOLL.COM, WWW.STOLL.COM

STOLL FASHION & TECHNOLOGY GERMANY

H. STOLL GMBH & CO. KG - STOLLWEG 1 - 72760 REUTLINGEN
TEL +49 (0)71213130, FAX +49 (0)7121313426
CONTACT@STOLL.COM, WWW.STOLL.COM

STOLL FASHION & TECHNOLOGY CENTER NEW YORK

250 WEST 39TH STREET (GROUND FLOOR) - NEW YORK - NY 10018
TEL +1 2123983869, FAX +1 2129217639
INFO@STOLLFTNY.COM, WWW.STOLLFTNY.COM

EDITORIAL DEPARTMENT: FASHION & TECHNOLOGY
ART DIRECTION & GRAPHIC DESIGN: SSAWSTUDIO.COM
PHOTOGRAPHY: ANDREW WOFFINDEN
STYLING: ANN-KATHRIN OBERMEYER
HAIR & MAKEUP: RAHEL TAÜBERT
MODELS: CHARLOTTE VERPLANCKE (MODELMANAGEMENT),
JAMIE KENDRICK (NEST MODELS)
LOCATION: PFULLINGER HALLEN
PRE-PRESS: TIMERAY.DE
PRINTING: SCHEUFELE.DE





STOLL.COM