

# Stripes

*Trend Collection  
Spring/Summer  
2010*

**STOLL**  
THE RIGHT WAY TO KNIT



**STOLL**  
THE RIGHT WAY TO KNIT



# Stripes

Trend Collection  
Spring/Summer  
2010

STOLL

THE RIGHT WAY TO KNIT



"THE STRIPE DOESN'T WAIT, DOESN'T STAND STILL. IT IS IN PERPETUAL MOTION, ANIMATES ALL IT TOUCHES, ENDLESSLY FORGES AHEAD, AS THOUGHT DRIVEN BY THE WIND." \*

WE FEEL ATTRACTED BY THE STRENGTH OF THE STRIPES, THIS ANCIENT DESIGN WHICH NEVER GREW OLDER AND WHICH WE ENCOUNTER DAILY: IN ARCHITECTURE, ARTS, DESIGN AND OBVIOUSLY IN FASHION. STRIPES APPEAR ESPECIALLY IN SUMMER COLLECTIONS OF NUMEROUS DESIGNERS AND BECOME A STYLE FORMATIVE ELEMENT.

PRECISELY THEREFORE THIS TREND COLLECTION IS DEDICATED TO THE "STRIPES" TOPIC.

KNITTING TECHNOLOGY OFFERS THE SIMPLEST WAY TO CREATE STRIPES BY CHANGING THE YARN COLOUR AT THE BEGINNING OF A NEW KNITTING ROW. MUCH MORE IS POSSIBLE THANKS TO MODERN, CUTTING-EDGE TECHNOLOGY: ENDLESS POSSIBILITIES DISCLOSE BY COMBINING COLOURS, STRUCTURES, INTARSIA, APPLICATIONS, DIFFERENT YARN TYPES AND THE VARIATION OF LENGTHS AND SEQUENCES.

THE MOST INTERESTING RESULTS ARE REFLECTED IN THIS TREND COLLECTION AND WE WOULD LIKE TO INVITE YOU TO FOLLOW US INTO THE WORLD OF STRIPED SAMPLES.

0810459

CMS 740

E 7.2

Knitted fabric in 1x1 technique with double and single layered hoops, in pointelle and tuck stitch  
structure









0810434

CMS 530 MULTI GAUGE

E 7.2

STOLL - Multi Gauges®

Knitting pattern with 12 one needle intarsia stripes on gathered interlock fabric, thread fixing with split technique (STOLL-Patent)









STOLL - Applications®  
Hoop pattern with pointelle structure on belt loops

0810450

CMS 330 TC-T

E 7.2



*Hooped pattern in jersey with cast off technique*

0810433

CMS 530 MULTI GAUGE

E 8.2



*Hooped pattern with structured bordure, gored jersey and tubular fabric*

0810454

CMS 740

E 7.2











*Intarsia pattern with slits and ornamental hoops with overlock effect*

0810425

CMS 530 MULTI GAUGE

E 8.2



*Striped intasia pattern with gore technique and pointelle structure*

0810448

CMS 530

E 18



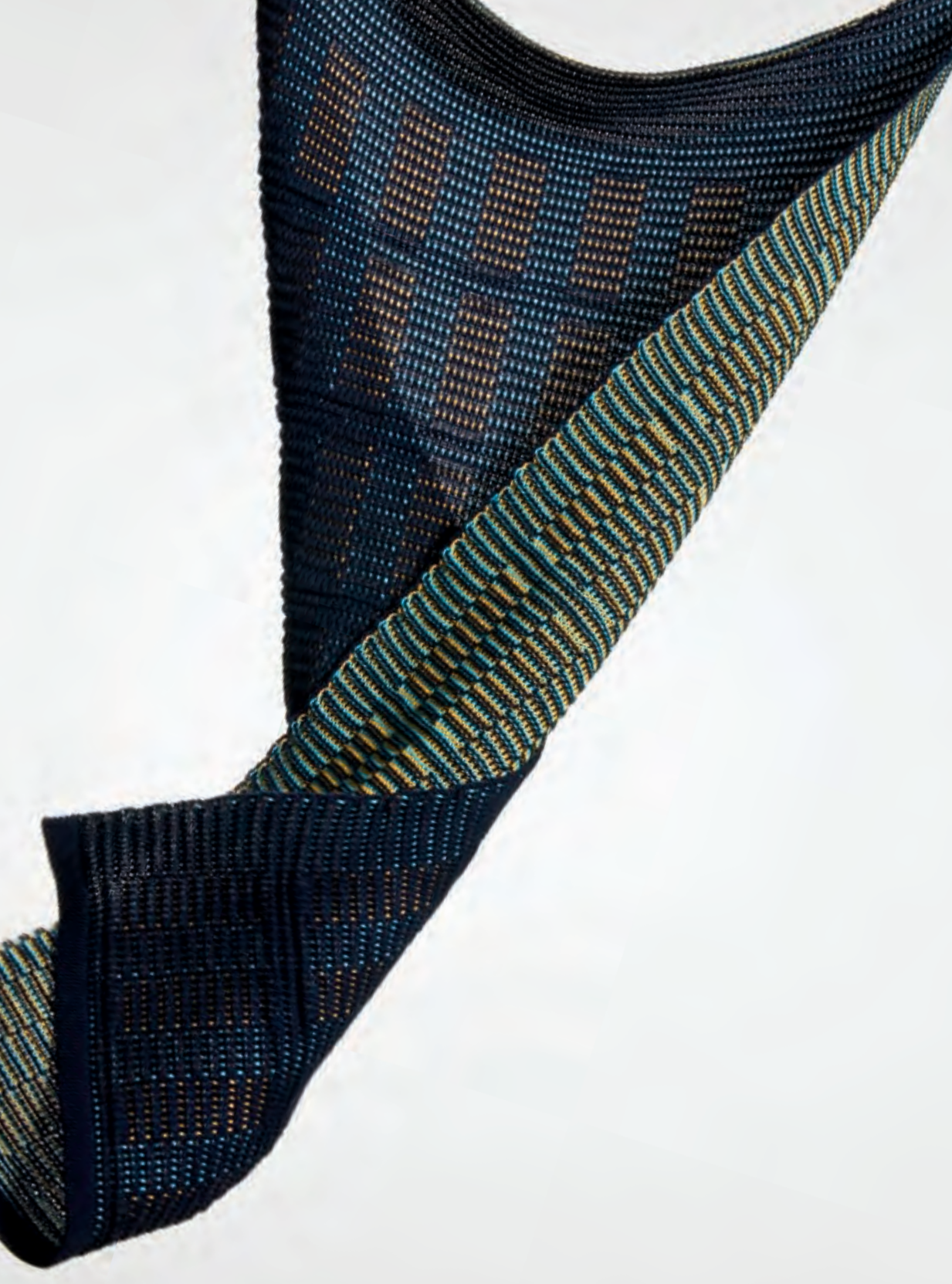
Knitted fabric with staggered wave structure and coloured hoops

0810415

CMS 740

E 6.2







0810451

CMS 822 MULTI GAUGE

E 8.2

*Crosswise knitted hooped pattern with intarsia waves and lateral tubular edge, shaped by gore technique*





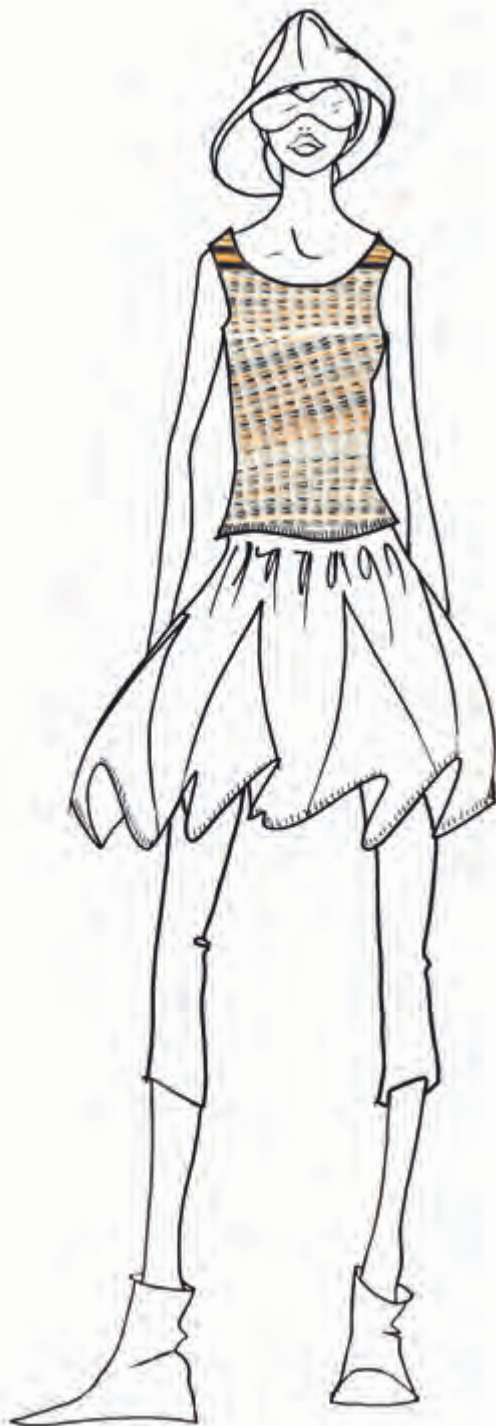


*Knitting pattern with jersey rib structure in front, hooped and gored back*

0810456

CMS 740

E 7.2





*Knitted fabric with gored wave bordure, different hoops in pointelle structure and tubular*

0810453

CMS 822 MULTI GAUGE

E 8.2





*Intarsia pattern with hoops and 3-colour jacquard motif*

0810452

CMS 530

E 18





STOLL - Applications®  
Hooped pattern with gored, bow-shaped wave application created by step transfer

0810409  
CMS 530 MULTI GAUGE  
E 8.2









0810394

**CMS 330 TC-T KNIT & WEAR**  
E 7.2

*STOLL - Knit and Wear®*

*Hooped skirt in layering-look with drop stitch structure*





0810408

CMS 322 TC-M

E 7.2

STOLL - Applications®

STOLL - Multi Gauges®

Pattern with colour and structure hoops in jersey with 2-layered knitting areas in 1x1 technique







STOLL - Applications®  
Fully Fashion front with gored meandering loops and hooped back

0810442

CMS 822

E 7.2



*Hooped pattern with intarsia motif and gore technique*

0810455 \_\_\_\_\_  
CMS 530 \_\_\_\_\_  
E 18 \_\_\_\_\_









*STOLL - Applications®  
Gored jersey pattern with multi-coloured wave applications with ornamental stitch*

0810457  
CMS 340 TC  
E 7.2

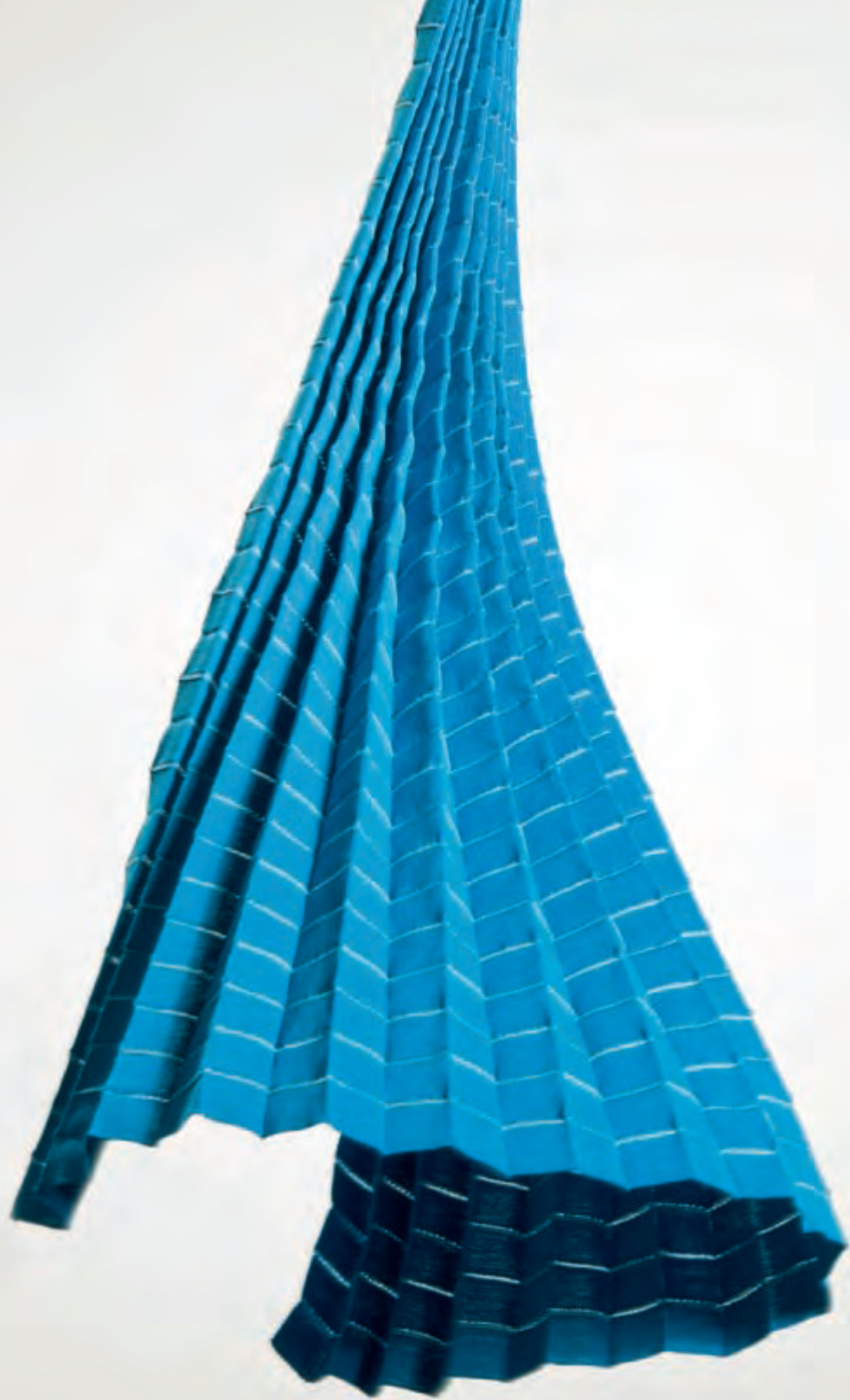
Knitted pleats with hoops in interlock structure

0810403

CMS 530

E 18







0810416

CMS 530 MULTI GAUGE

E 8.2

STOLL - Applications®

*Hooped pattern in 1x1 technique with bow-shaped wave applications, created by step transfer*





Hooped pattern with optically variable colour effect by horizontal and vertical change of the purl colour

0810411 \_\_\_\_\_  
CMS 740 \_\_\_\_\_  
E 7.2 \_\_\_\_\_









0810429

CMS 340 TC

E 5.2

STOLL - Applications®

STOLL - Multi Gauges®

Gored jersey fabric with integrated meandering tape



*Striped knitted fabric in weaving look with hoop effect by alternation of the additional colour stitches  
in front and behind the floats*

0810424

**CMS 530**

E 18









0810449

CMS 530

E 18

*STOLL - Applications®*

*Fully Fashion-intarsia knit with tape applications*





STOLL - Applications®

*Intarsia pattern with pleats, 2-colour float jacquard and twisted meandering tapes*

0810401

CMS 530 MULTI GAUGE

E 7.2







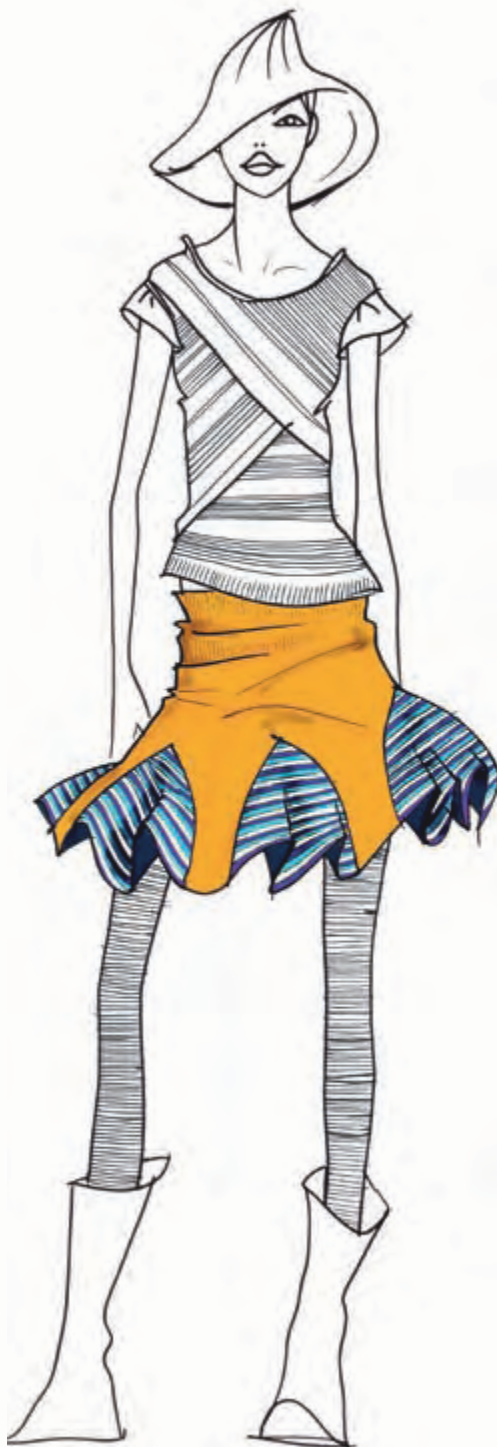
0810458

CMS 340 TC

E 9.2

STOLL - Multi Gauges®

*Crosswise knitted striped pattern, with lateral intarsia inserts in gore technique with 3-colour jacquard stripes*





*Hooped pattern with 2-colour cloqué-relief jacquard with interlock, twill and float back side*

0810427

CMS 530

E 18



STOLL - Applications®  
STOLL - Racking Effects®  
Intarsia pattern in 1x1 technique with overlying, diagonal intarsia tapes

0810414  
CMS 340 TC-M  
E 3,5,2







Gored, multi-coloured jersey pattern with structured waves

---

0810460

---

CMS 340 TC

---

E 2,5.2







*Crosswise knitted striped Fully Fashion jersey cardigan in 1x1 technique, with tubular button panel and button loops. Fair isle shaping by gore technique. Thread fixing with split technique (Stoll-Patent)*

0810405

CMS 822 KNIT & WEAR

E 7.2



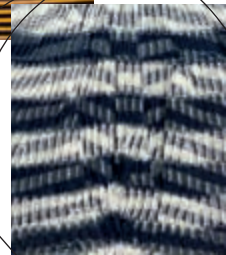
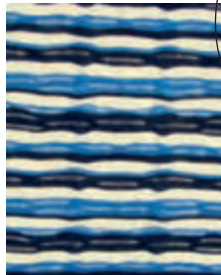
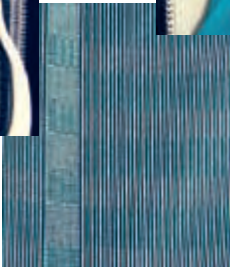
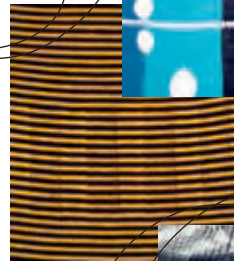
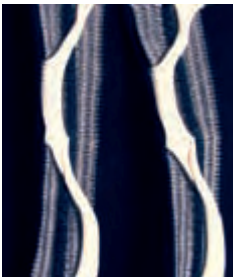
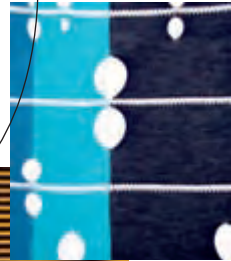
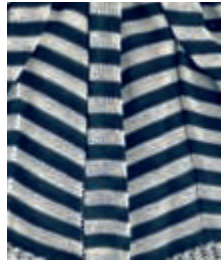


# Stoll Pattern Database

HOW TO WORK WITH THE STOLL PATTERN DATABASE:

## STEP 1

BROWSE THE ENTIRE  
PATTERN LIBRARY FOR  
INTERESTING SAMPLES.



**STEP 2**

DOWNLOAD THE PICTURE OF YOUR SELECTED SAMPLE. PICTURES OF SWATCHES ARE AVAILABLE IN HIGH RESOLUTION, ADDITIONALLY THERE ARE CLOSE-UPS OF ALL KNITS.

**STEP 3**

PLACE THE SAMPLE INTO YOUR GRAPHIC PROGRAM AND COVER YOUR SKETCHES WITH THE ORIGINAL STRUCTURE. NOW YOU CAN EVALUATE YOUR DESIGN PERFECTLY.

# Yarn Details

PAGE	NUMBER	YARN DETAILS
6	0810459	FILPUCCI: ESSENZA, NM 44 (76% VI, 24% PA) EMILCOTONI: SUVIN HT, NM 90/3 (100% CO)
8	0810434	DI.VÉ: CARVING, NM 5,7 (60% CO, 40% PC) FILPUCCI: ESSENZA, NM 44 (76% VI, 24% PA)
10	0810450	FILPUCCI: ESSENZA, NM 44 (76% VI, 24% PA)
12	0810433	EMILCOTONI: SUVIN HT, NM 90/3 (100% CO) FILPUCCI: ESSENZA, NM 44 (76% VI, 24% PA)
14	0810454	EMILCOTONI: SUVIN HT, NM 90/3 (100% CO) IGEA: FINISSIMO CREPE, NM 60/2 (85% VI, 15% PES) FILPUCCI: ESSENZA, NM 44 (76% VI, 24% PA)
16	0810425	EMILCOTONI: SUVIN HT, NM 90/3 (100% CO) SCHOELLER: VISTA, NM 60/4 (50% CO, 50% CMD)
18	0810448	IGEA: FINISSIMO CREPE, NM 60/2 (85% VI, 15% PES) FILPUCCI: ESSENZA, NM 44 (76% VI, 24% PA)
20	0810415	SCHOELLER: VISTA, NM 60/4 (50% CO, 50% CMD)
22	0810451	FILPUCCI: ESSENZA, NM 44 (76% VI, 24% PA)
24	0810456	FILPUCCI: ESSENZA, NM 44 (76% VI, 24% PA) LINEAPIÙ: NOIR, NM 70 (82% CO, 18% PA)
26	0810453	FILPUCCI: ESSENZA, NM 44 (76% VI, 24% PA) EMILCOTONI: SUVIN HT, NM 90/3 (100% CO) LINEAPIÙ: NOIR, NM 70 (82% CO, 18% PA)
28	0810452	FILPUCCI: ESSENZA, NM 44 (76% VI, 24% PA) IGEA: FINISSIMO CREPE, NM 60/2 (85% VI, 15% PES)
30	0810409	EMILCOTONI: SUVIN HT, NM 90/3 (100% CO) FILPUCCI: ESSENZA, NM 44 (76% VI, 24% PA)

32	0810394	IGEA: FINISSIMO CREPE, NM 60/2 (85% VI, 15% PES) FILPUCCI: ESSENZA, NM 44 (76% VI, 24% PA) LINEAPIÙ: NOIR, NM 70 (82% CO, 18% PA)
34	0810408	SCHOELLER: VISTA, NM 60/4 (50% CO, 50% CMD)
36	0810442	EMILCOTONI: SUVIN HT, NM 90/3 (100% CO) LINEAPIÙ: NOIR, NM 70 (82% CO, 18% PA)
38	0810455	IGEA: FINISSIMO CREPE, NM 60/2 (85% VI, 15% PES) FILPUCCI: ESSENZA, NM 44 (76% VI, 24% PA)
40	0810457	LINEAPIÙ: NOIR, NM 70 (82% CO, 18% PA) IGEA: FINISSIMO CREPE, NM 60/2 (85% VI, 15% PES)
42	0810403	EMILCOTONI: SUVIN HT, NM 90/3 (100% CO) IGEA: FINISSIMO CREPE, NM 60/2 (85% VI, 15% PES)
44	0810416	EMILCOTONI: SUVIN HT, NM 90/3 (100% CO)
46	0810411	SCHOELLER: VISTA, NM 60/4 (50% CO, 50% CMD)
48	0810429	DI.VÉ: CARVING, NM 5,7 (60% CO, 40% PC) SCHOELLER: VISTA, NM 60/4 (50% CO, 50% CMD)
50	0810424	EMILCOTONI: SUVIN HT, NM 90/3 (100% CO)
52	0810449	IGEA: FINISSIMO CREPE, NM 60/2 (85% VI, 15% PES)
54	0810401	EMILCOTONI: SUVIN HT, NM 90/3 (100% CO) SCHOELLER: VISTA, NM 60/4 (50% CO, 50% CMD)
56	0810458	IGEA: FINISSIMO CREPE, NM 60/2 (85% VI, 15% PES) LINEAPIÙ: NOIR, NM 70 (82% CO, 18% PA)
58	0810427	EMILCOTONI: SUVIN HT, NM 90/3 (100% CO) IGEA: FINISSIMO CREPE, NM 60/2 (85% VI, 15% PES)
60	0810414	LINEAPIÙ: JAZZ, NM 3,8 (96% CO, 4% PBT)
62	0810460	LINEAPIÙ: JAZZ, NM 3,8 (96% CO, 4% PBT)
64	0810405	SCHOELLER: VISTA, NM 60/4 (50% CO, 50% CMD)



# Addresses

## ADDRESSES

### DI.VÉ S.P.A.

VIA PAPA GIOVANNI XXIII, 94 – 13882 VERGNASCO – CERRIONE (BI) – ITALY  
TEL. +39 0152583057, FAX +39 0152583900  
DIVE@FILATIDIVE.IT

### EMILCOTONI S.P.A.

VIALE DELL'INDUSTRIA 12 – 29100 PIACENZA (PC) – ITALY  
TEL. +39 0523606913, FAX +39 0523608054  
INFO@EMILCOTONI.IT, WWW.EMILCOTONI.IT

### FILPUCCI S.P.A.

VIA DEI TIGLI 41 – 50010 CAPALLE (FI) – ITALY  
TEL. +39 05589871, FAX +39 055898465  
FILPUCCI@FILPUCCI.IT, WWW.FILPUCCI.IT

### IGEA S.P.A.

VIA POLLATIVE 119 – 50047 PRATO (FI) – ITALY  
TEL. +39 057451811, FAX +39 0574621749  
IGEA@IGEAYARN.IT, WWW.IGEAYARN.IT

### LINEAPIÙ S.P.A.

VIA GOBETTI 12 – 50010 CAPALLE (FI) – ITALY  
TEL. +39 05589561, FAX +39 0558956568  
GRUPPOLINEAPIU@LINEAPIU.COM, WWW.LINEAPIU.COM

### SCHOELLER GMBH & CO.KG

MARIAHILFSTRASSE 29 – 6900 BREGENZ – AUSTRIA  
TEL. +43 (0)5574609, FAX +43 (0)5574609 1304  
INFO@SCHOELLER-WOOL.COM, WWW.SCHOELLER.COM



# Locations

## HEADQUARTERS

### GERMANY

H. STOLL GMBH & CO. KG – STOLLWEG 1 – 72760 REUTLINGEN  
TEL. +49 71213130, FAX +49 7121313110  
CONTACT@STOLL.COM, WWW.STOLL.COM

## BRANCHES & AGENCIES

### FRANCE

STOLL FRANCE – 85-87 AVENUE HENRI BARBUSSE – 92140 CLAMART  
TEL. +33 141088383, FAX +33 141088500  
STOLLFRANCE@WANADOO.FR

### ITALY

STOLL ITALIA SRL. – VIA DEI MANISCALCHI 9/A – 41012 CARPI (MO)  
TEL. +39 059651899, FAX +39 059654923  
STOLLITALIA@STOLL.IT

### USA, CANADA

STOLL AMERICA KNITTING MACHINERY, INC. – 839 STEWART AVENUE, UNIT 3,  
GARDEN CITY – NEW YORK, NY 11503 – USA  
TEL. +1 5162272600, FAX +1 5162272607  
INFO@STOLLAMERICA.COM

### JAPAN

STOLL JAPAN CO. LTD. – MINATO-KU, SHIBAURA 4-16-23, AQUACITY  
SHIBAURA – TOKYO 108-0023  
TEL. +81 337693690, FAX +81 337693694  
INFO@STOLLJAPAN.JP

### INDIA

STOLL INDIA PVT. LTD. – A-18, SECTOR 58, NOIDA –  
DISTRICT GAUTAM BUDH NAGAR U.P. 201301  
TEL. +91 1203298033/2586454, FAX +91 1202586455  
SALES@STOLL-INDIA.COM

### CHINA, HONGKONG, TAIWAN, THAILAND

CHEMTAX (STOLL) COMPANY LIMITED – 6/F, GOLDSLAND BUILDING –  
22-26 MINDEN AVENUE, TSIM SHA TSUI, KOWLOON – HONG KONG  
TEL. +852 23686269, FAX +852 23687500  
STOLL@CHEMTAX.COM

**FASHION & TECHNOLOGY**

STOLL FASHION & TECHNOLOGY GERMANY – STOLLWEG 1 – 72760 REUTLINGEN  
TEL. +49 71213130, FAX +49 7121313426  
[WWW.STOLL.COM](http://WWW.STOLL.COM)

STOLL FASHION & TECHNOLOGY INTERNATIONAL CENTRE – BUILDING 2 –  
800 SHENFU RD. – XIN ZHUANG INDUSTRIAL PARK – SHANGHAI –  
CHINA 201108  
TEL. +86 2154428188222, FAX +86 2154427133  
[WWW.STOLL.COM.CN](http://WWW.STOLL.COM.CN)

STOLL FASHION & TECHNOLOGY NEW YORK – 39TH STREET FASHION CENTER –  
250 WEST 39TH STREET – NEW YORK, NY 10018 – USA  
TEL. +1 5162272600, FAX +1 5162272607  
[WWW.STOLLFTNY.COM](http://WWW.STOLLFTNY.COM)

**DETAILS**

EDITORIAL DEPARTMENT: FASHION & TECHNOLOGY

ART DIRECTION & GRAPHIC DESIGN: STUDIOOLYMPIA.DE

PHOTOGRAPHY: RAFAELKROETZ.DE

ILLUSTRATION: MAURIZIA CERESA, INFO@SUNFLOWERSTYLE.IT

©2008 STOLL GMBH & CO.KG



