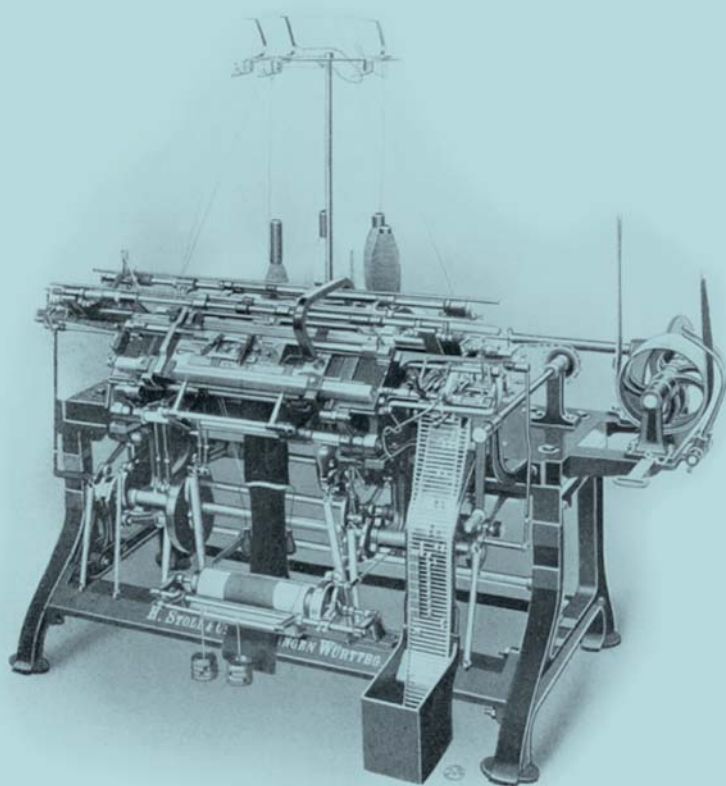


TREND COLLECTION

AUTUMN/WINTER
2011/12

VINTAGE



STOLL

A collection of vintage patterns and jacquards from the STOLL archive -
re-interpreted with modern technology for AW 2011/12

STOLL

Strickmaschinenfabrik - established 1873

OUR INSPIRATIONS

Industrial Heritage was the guiding theme of the present collection. Our own history provided us with ample inspiration. Stoll has been developing knitting machines for more than 135 years and has not only gained invaluable experience and fostered technical innovation in flat knitting, but has also built up a huge archive of its own pattern books, swatches and knitted garments.

The phenomenon Vintage has been revived, more so than ever before and present in almost every look. The outfits are time machines and associations can be found everywhere. Memories awake along with the nostalgia of past - apparently better times. People shop around again in cupboards and flea markets instead of expensive boutiques with the aim to show everyone that one does not yield to an existing trend and that one remains unimpressed about bulk production.

Historically, the basis of our new Trend Collection AW 2011/12 is from the years between the fifties and seventies. During this period, a technological leap happened leading us from mechanical to electronic knitting machines. At that time, the transfer onto empty needles was patented and the electronic single needle selection implemented. These developments considerably influenced knitting fashion, setting the standard for machine manufacturing since then. This collection is based on knitting patterns seen in pattern books and archive samples from the fifties. They were re-interpreted and innovated applying the above mentioned developments.

The single and combined application of these technologies enables us to design shaped knitted pieces with three-dimensional elements, given the possibility of sectional knitting.

Additionally, thanks to Stoll-multi gauges® technology, one can freely knit different gauges in one piece and select all preferred yarns. The Intarsia technique was applied as a graphical design tool with the ability to integrate blends, collars, bags and button holes.

It is the combination of artisanal tradition and modern industrial opportunities that makes our collection distinctive.

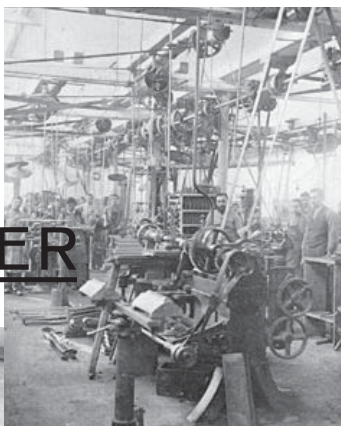
The collection's palette consists of sober, earthy tones mixed with deep blue and green. In contrast, bright beige loosens up the atmosphere and provides the collection with casualness.

Merino wools and carded yarns define the material of this collection. Tweed yarn underlines the vintage look and bouclé yarn supports the felting character of knitwear.

We found the perfect staging for the collection at a former leather factory in Schorndorf, a small town in southern Germany. The virtually untouched fabrication rooms of the facility set the mood of the collection.

Being aware of the importance of a sample archive, Stoll developed the Pattern Library. It is a compendium for designers and producers which is regularly widened by new editions referring to our collections and special subjects. With it you can access step by step our knitting experience of 135 years. We invite you to share this history with us!

AUTUMN/WINTER 2011/12

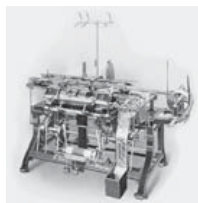


THE HISTORY OF STOLL

Let's go on a journey back in time and discover some milestones of our company's history. Among hundreds of patents and innovations and nearly 300 different machine types we have selected some interesting developments for you:

1919

First automatic all needle narrowing knitting machine with chain control



1926

First knitting machine with movement cards as information carriers to automatically control all machine functions



1873

Company agreement, July 27:
Foundation of a „Mechanical Workshop
for the Manufacture of Knitting
Machines“, Riedlingen



1878

Heinrich Stoll, founder of the company;
change of company's name to
„Strickmaschinenfabrik H. Stoll & Co.“
Reutlingen



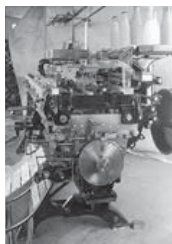
1936

First 2-system flat knitting machine
AJUM with jacquard device



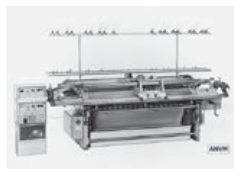
1936

LIFADO



1978

The dual-system NC-controlled ANVH



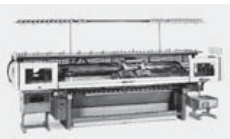
1979

Presentation of: world's first electronically controlled flat knitting machine, type CNCA-3; own programming language Sintral; world's first pattern preparation unit, type VDU



1982

Flat knitting machine with high-performance computer and Selan network connection, type CNCA-3



1987

CMS 400 machine generation:
world's first computer controlled flat
knitting machines which simultaneously
can do intarsia, gore-technique
and Fully Fashion



1997

Patent application for the Stoll-multi
gauges* technique: several gauges in one
knitted fabric, without gauge conversion



1999

All CMS machines are equipped with
the worldwide unique operation system
Stoll-touchcontrol*



2001

Presentation of pattern workstation M1,
nowadays sample software M1plus*



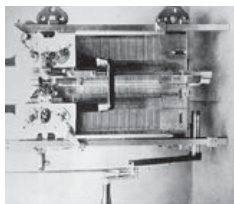
2003

Introduction of product family
CMS 322 TC-M, the machine with
the largest working width and with a
take-down comb and clamping/cutting
device



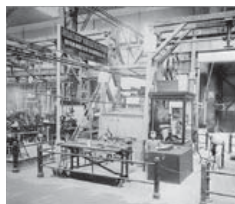
1892

The world's first functional purl stitch hand flat knitting machine



1893

Exhibitor's Award at World Exhibition in Chicago



1899

Delivery of the first purl stitch-petinet machine with weaving loom jacquard device



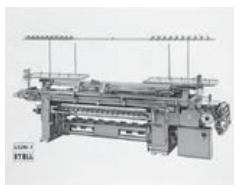
1906

Development of the first purl stitch machine with jacquard device



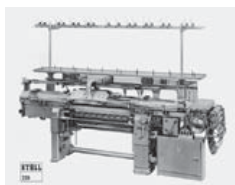
1958

World's first automatic purl stitch transfer flat knitting machine LIUM



1963

First automatic Fully Fashion all needle flat knitting machine, type 220



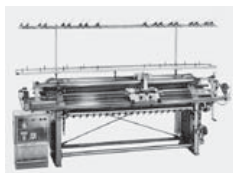
1966

Patent specification: Stitch transfer on empty needles



1975

Worldwide first NC-controlled (electronically controlled) all needle flat knitting machine ANV with real individual needle selection



1988

For the first time, technical textiles are produced on flat knitting machines



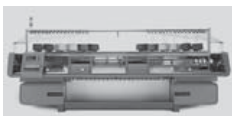
1991

Pattern preparation unit SIRIX



1994

Introduction of world's highest-performance flat knitting machine, type CMS 433.6, with a reduced system width of only 6"



1996

First patent application for a seamless Stoll-knit and wear garment and presentation of the CMS 340 knit and wear machine*



2005

Presentation of the new CMS-machine generation with higher productivity, also presentation of CMS 730 S knit&wear machine for the manufacture of finished products



2006

Presentation of the economy line machine CMS 420 E



2008

Opening of ITMA Asia / CITME in Shanghai on July 27th



2009

Introduction of new HP (high productivity) machine generation



THE COLLECTION



N° 1010215 / CMS 340 TC E2,5.2

cut and sew cardigan with multicolour and tubular jacquard and tuck stitch
rib structure, sleeves in Fully Fashion



N° 0910618 / CMS 830 C KNIT&WEAR E 2,5,2

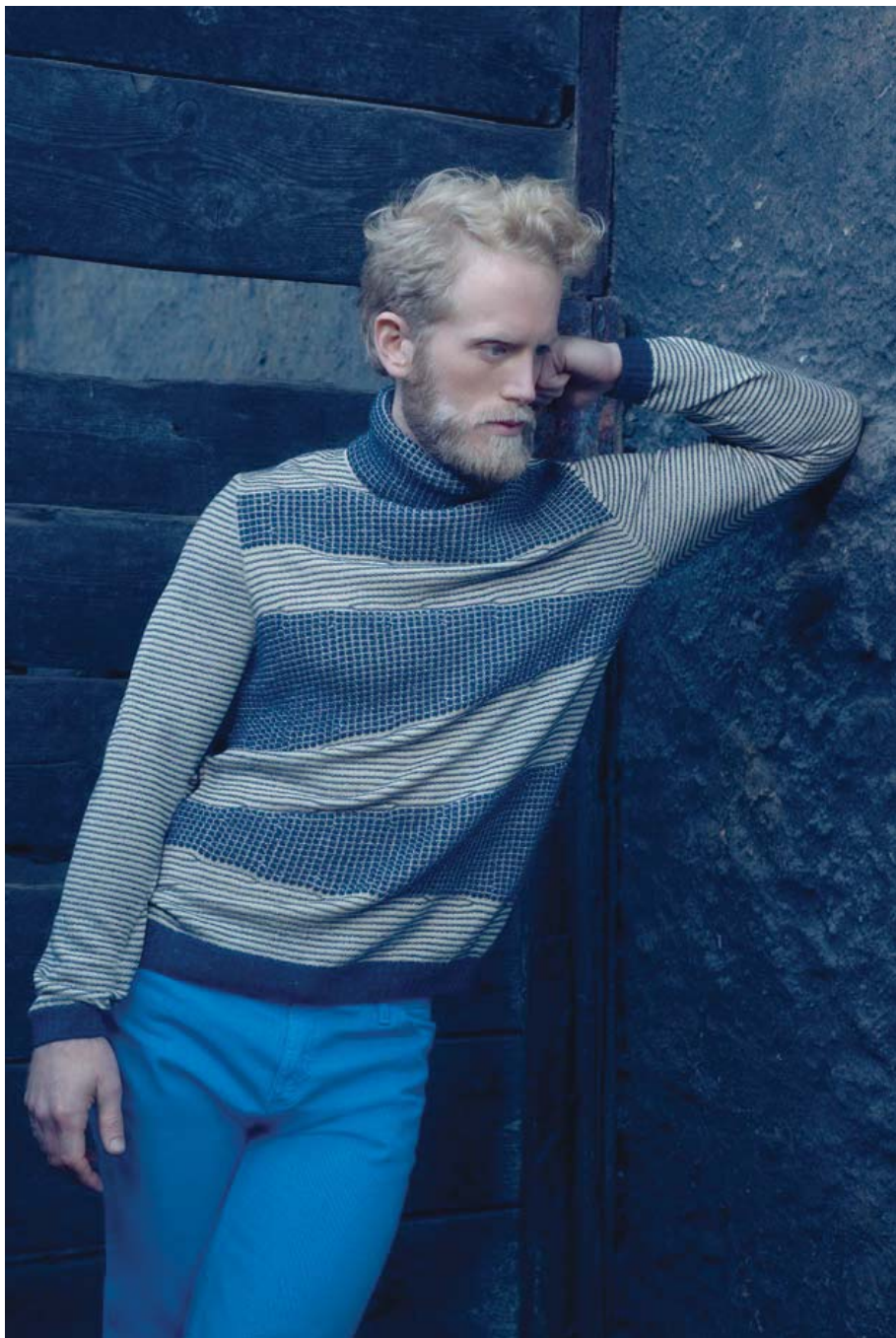
STOLL-KNIT AND WEAR®

jersey slipover with loop openings in dégradé

Nº 0910617 / CMS 530 MULTI GAUGE E 7.2

STOLL-MULTI GAUGES®

striped Fully Fashion pullover with naps pattern and gore technique





N° 0910607 / CMS 740 E 5.2

STOLL-MULTI GAUGES®

Fully Fashion pullover in 2-colour pointelle structure with overlapping
V-neck in 2x2 rib, neckline shaped by shoulder part narrowing

N° 1010198 / CMS 740 E 72

Fully Fashion intarsia pullover with different jacquards and structured stripes, chest part in jersey with holding stitches





N° 1010205 / CMS 822 MULTI GAUGE E 8.2

Fully Fashion skirt in different structured stripes with pointelle and tuck stitch



N° 1010199 / CMS 740 E 72

STOLL-APPLICATIONS®

oversized cut and sew patchwork pullover with different multicoloured
jacquard structures





Nº 1010157 / CMS 822 HP E 7.2

Fully Fashion pullover with 3-colour float jacquard transfer structure,
linked on folded 3-layer collar and 2-layer cuffs

Nº 1010134 / CMS 822 HP MULTI GAUGE E 7.2

STOLL-MULTI GAUGES®

pullover with different jacquard structures, chest part and sleeves
knitted in one piece in gored jersey float structure with 2-colour 1x1 rib
herringbone design, V-neck collar and waistband in 2-colour 1x1 rib full
cardigan with zig-zag rack effect



N° 1010148 / CMS 822 HP E S.2

STOLL - MULTI GAUGES®

STOLL - APPLICATIONS®

Fully Fashion jersey intarsia pullover with racked structured bordure, knitted on coarse gauge patch pocket, chest part and sleeves knitted in one piece with jersey float and jacquard structure



N° 1010197 / CMS 740 E 72

sleeveless Fully Fashion dress with different jacquard motifs, structured stripes with cables, pointelle and naps



Nº 1010132 / CMS 740 E 5.2

STOLL-MULTI GAUGES®

STOLL-APPLICATIONS®

2-layered Fully Fashion blouse with overlapping shoulder part in pointelle structure and buttoned placket, middle part in 1x1 jersey structure, bottom part in 3x1 needle lay-out

Nº 1010200 / CMS 330 TC-T E 7.2

horizontal and vertical striped Fully Fashion skirt in jacquard transfer structure

N° 1010122 / CMS 830 C E 2,5.2

STOLL-MULTI GAUGES®

Fully Fashion pullover in 1x1 technique with 2x3 cables, 2x1 Aran pattern, knitted on cable tapes, sleeves with intarsia





Nº 0910622 / CMS 530 HP MULTI GAUGE E 7.2

STOLL-MULTI GAUGES®

Fully Fashion intarsia short-sleeved pullover with 2-colour jacquard and 2x2 cables with cast-off technique

Nº 0910608 / CMS 740 E 7.2

STOLL-MULTI GAUGES®

Fully Fashion waistcoat with 2-colour jacquard in 1x1 rib, intarsia,
French shoulder and knitted on buttoned placket



Nº 1010010 / CMS 830 C E2,5.2

STOLL-MULTI GAUGES®

STOLL-APPLICATIONS®

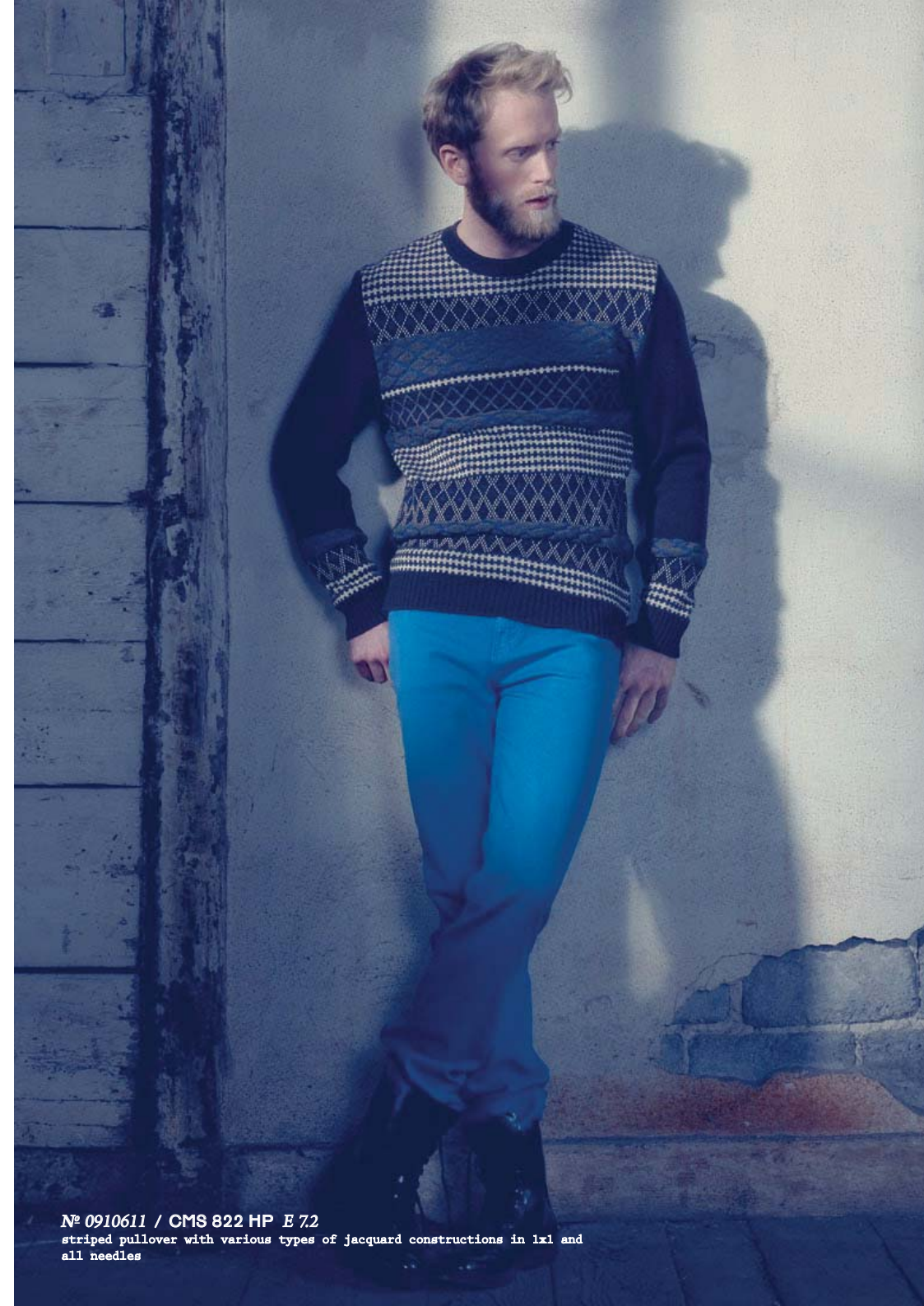
Fully Fashion waistcoat with coarse 2x3 cable, 2-colour 2x3 coarse-fine,
2x1 Aran pattern and 2-layered back part with loose shoulder yoke



N° 0910628 / CMS 822 HP E 7.2

Fully Fashion intarsia jacquard pullover with colour change, large inserted jersey V-neck collar in STOLL-KNIT AND WEAR® with Half Cardigan stitch





N° 0910611 / CMS 822 HP E 7.2

striped pullover with various types of jacquard constructions in 1x1 and all needles



N° 1010195 / CMS 822 MULTI GAUGE E 8.2

Fully Fashion jersey dress with 3-colour jacquard intarsia structure at skirt part, collar with intarsia cloqué jacquard



N° 0910612 / CMS 830 E2,5,2

STOLL - MULTI GAUGES®

Fully Fashion intarsia pullover with straight coarse 2x3 cable and diagonal cables, one in 2x3 coarse-fine and another one in 2x6 fine



N° 1010204 / CMS 740 E 72

vertical striped sleeveless dress in jacquard transfer structure



N° 1010164 / CMS 740 E 7.2

STOLL-MULTI GAUGES®

Fully Fashion empire dress with intarsia hound's-tooth float jacquard, opposed running pleats at the breast part created by stitch doubling and transfer structure



N° 1010209 / CMS 340 TC E 7.2

4-colour jacquard scarf in rhombic design with different jacquard structures at each end

cap shaped by gore technique with different multicoloured jacquards

STOLL-APPLICATIONS®

cut and sew wrap-around cardigan with shawl collar and different multicoloured jacquard structures, body knitted in one piece

STOLL-KNIT AND WEAR®

leggings with 2-colour jersey tuck stitch structure, 2x1 rib and linked-off elastic waist

№ 1010176 / CMS 330 TC-T E 6.2

Fully Fashion pullover in rhombic design with 3-colour float jacquard transfer structure







N° 1010212 / CMS 340 TC E2,5,2

Fully Fashion raglan pullover in 3-colour jacquard with transfer,
turning from front motif to 1x2 net back side, Fair Isle shaping by gore
technique, front and sleeves knitted in one piece



N° 1010169 / CMS 530 MULTI GAUGE E 2,5,2

Fully Fashion pullover in 1x1 technique and 2-colour rhombic design jacquard with transfer



N° 1010147 / CMS 822 HP E 6.2

STOLL-MULTI GAUGES®

Fully Fashion pullover in jersey structure with fancy stitch, intarsia stripes in the back and sleeves with 3x3 and 3x2 cables



N° 1010201 / CMS 340 TC E 72

striped Fully Fashion cardigan with cloqué cross tubular jacquard combined
with 2-colour float jacquard, waves and different structured stripes

cut and sew dress with goring and different jacquard motifs, structured stripes with intarsia, cables, waves and jersey structure



N° 1010143 / CMS 822 HP MULTI GAUGE E 7.2

STOLL-MULTI GAUGES®

STOLL-APPLICATIONS®

Fully Fashion casual pants with different jacquard structures, alternately shown from the front and the back side, inner leg intarsia, side pockets, linked on waistband with belt openings



N° 0910620 / CMS 530 MULTI GAUGE E 7.2

STOLL-APPLICATIONS®

vertical striped Fully Fashion jacket in 2-colour 1x1 rib Full Cardigan rack stitch with knitted on patch thrust-in-pockets, saddle shoulder, polo collar in Milano rib structure



Nº 1010185 / CMS 530 E 2,5.2

structured swatch in 4-colour float jacquard with 2x2 cables, stripes and PTS-technique



Nº 1010214 / CMS 340 TC E2,S2

coat with shawl collar in jersey float transfer structure, intarsia
borders and cuffs with tuck stitch rib structure





N° 0910615 / CMS 822 HP MULTI GAUGE E 5.2

STOLL-MULTI GAUGES®

Fully Fashion Cardigan with stripes in jersey float structure, 2-colour 1x1 rib Full Cardigan and herringbone design, body knitted in one piece and shaped by gore technique

N° 0910627 / CMS 822 HP E 7.2

Fully Fashion sleeves in cross-tubular jacquard with structured stripes, tubular trimming for zipper in STOLL-KNIT AND WEAR® technique



N° 0910624 / CMS 530 MULTI GAUGE E 8.2

Fully Fashion jersey cardigan with 3-colour 1x1 jacquard bordures, shaped by gore technique and multi-narrowing, pleat gathering at shoulder, Aran pattern in body and at sleeve cuffs

Nº 1010187 / CMS 530 E2,S.2

swatch in 4-colour jersey float structure with transfer





N° 1010124 / CMS 530 HP E 7.2

Fully Fashion cardigan in 2-colour jacquard, showing both, the front and the back of the pattern, knitted on patch thrust-in-pockets and 1xl rib trimming, cuffs with intarsia openings for the belts



N° 0910619 / CMS 530 MULTI GAUGE E 7.2

STOLL-MULTI GAUGES®

Fully Fashion jersey intarsia polo shirt with tuck pattern in the centre and knitted on buttoned placket



N° 0910626 / CMS 530 MULTI GAUGE E 72

Fully Fashion cardigan in jersey transfer structure with fancy zig-zag
stitch and knitted on tubular buttoned placket

FUNCTIONAL WEAR





Nº 1010178 / CMS 740 E 5.2

Fully Fashion cardigan with shawl collar, layer technique with transferred connection, 2-colour stripe inside



Nº 1010182 / CMS 740 E 7.2

STOLL-MULTI GAUGES®

Fully Fashion cardigan with 2-colour jacquard inside and 1x1 knitting outside



N° 1010180 / CMS 530 E 7

Fully Fashion pullover with stand-up collar, inlay yarn and body line in layer technique with tuck connection



N° 1010179 / CMS 530 E 7

Fully Fashion 2-colour jacquard pullover



Nº 1010181 / CMS 822 MULTI GAUGE E 7.2

Fully Fashion waistcoat with holding stitches and integrated pockets,
knitted in one piece

PATTERN LIBRARY

SPECIAL EDITION JACQUARD



*Pattern Library: Special Edition Jacquard
(dimensions: 37cm x 22cm x 25cm)*

KNIT-ABC

VOL. 2 JACQUARD

We understand the continual knowledge transfer in regard to knitting technology and its applications as one of the most important tasks of our Fashion & Technology department. For this purpose, we offer a wide range of services such as seminars, academy cooperations, publications and our Fashion & Technology tools. Among the latter are the Stoll Trend Collection and corresponding booklet, the Pattern Database, the Knit-ABC and the Pattern Library.

Together with the new Jacquard Knit-ABC, we have also published a special Jacquard Pattern Library. It gives deeper insight and shows more complex interrelation than the Knit-ABC. Therefore, special editions in general, are geared toward company trainings and academic education in knitting technique. By anticipating actual knitting trends, the Jacquard special edition has appeared just in time to assist designers and knitwear product developers.



Jacquard Pattern Library with 28 swatches and CD-Rom with the corresponding programs



Knitting sample and technical sheet with stitch notation

The special edition provides graphic and haptic Jacquard knitting knowledge and explains technical issues by means of samples. Hence, it improves communication between technical and design departments, showing both - designer's expectations and technical feasibility, and how final fabric properties are affected. As a result of a positive response, we will publish further special editions referring to interesting knitting applications.

Be prepared to keep learning!



Knit-ABC Vol.2 Jacquard with box
(dimensions: 23cm x 10cm x 5,5cm)



Technical card with stitch notation,
characteristics and knitting sample



Knit-ABC fan with 15 jacquard basic structures

YARN DETAILS

P.	No.	YARN DETAILS
9	<u>1010215</u>	Zegna Baruffa: Mousse, Nm 14 (70% WV, 30% PA) Knoll Yarns: Soft Donegal, Nm 3,8/1 (100% WV) Botto Poala: Breton, Nm 36/2 (100% WV)
10	<u>0910618</u>	Knoll Yarns: Soft Donegal, Nm 3,8/1 (100% WV) Filpucci: Point, Nm 15/1 (65% WV, 20% PA, 10% WA, 5% VI)
11	<u>0910617</u>	Botto Poala: Breton, Nm 36/2 (100% WV) Filpucci: Point, Nm 15/1 (65% WV, 20% PA, 10% WA, 5% VI)
12	<u>0910607</u>	Zegna Baruffa: Millennium SWE, Nm 60/2 (100% WV) Botto Poala: Breton, Nm 36/2 (100% WV) Knoll Yarns: Soft Donegal, Nm 3,8/1 (100% WV)
13	<u>1010198</u>	Filpucci: Point, Nm 15/1 (65% WV, 20% PA, 10% WA, 5% VI) Botto Poala: Breton, Nm 36/2 (100% WV) Zegna Baruffa: Mousse, Nm 14 (70% WV, 30% PA) Zegna Baruffa: Millennium SWE, Nm 60/2 (100% WV)
14	<u>1010205</u>	Botto Poala: Breton, Nm 36/2 (100% WV)
15	<u>1010199</u>	Zegna Baruffa: Mousse, Nm 14 (70% WV, 30% PA) Millefili (Bluring): Mastev, Nm 33 (57% PA, 30% WP, 13% WV) Botto Poala: Breton, Nm 36/2 (100% WV)
16	<u>1010134</u>	Botto Poala: Breton, Nm 36/2 (100% WV) Zegna Baruffa: Millennium SWE, Nm 60/2 (100% WV) Zegna Baruffa: Mousse, Nm 14 (70% WV, 30% PA) Filpucci: Point, Nm 15/1 (65% WV, 20% PA, 10% WA, 5% VI) Millefili (Bluring): Mastev, Nm 33 (57% PA, 30% WP, 13% WV)
17	<u>1010157</u>	Zegna Baruffa: Millennium SWE, Nm 60/2 (100% WV) Botto Poala: Breton, Nm 36/2 (100% WV) Zegna Baruffa: Mousse, Nm 14 (70% WV, 30% PA)
18	<u>1010148</u>	Filpucci: Point, Nm 15/1 (65% WV, 20% PA, 10% WA, 5% VI) Zegna Baruffa: Millennium SWE, Nm 60/2 (100% WV) Botto Poala: Breton, Nm 36/2 (100% WV) Knoll Yarns: Soft Donegal, Nm 3,8/1 (100% WV)
19	<u>1010197</u>	Zegna Baruffa: Mousse, Nm 14 (70% WV, 30% PA) Millefili (Bluring): Mastev, Nm 33 (57% PA, 30% WP, 13% WV) Botto Poala: Breton, Nm 36/2 (100% WV)
20	<u>1010132</u>	Zegna Baruffa: Mousse, Nm 14 (70% WV, 30% PA) Knoll Yarns: Soft Donegal, Nm 3,8/1 (100% WV) Millefili (Bluring): Mastev, Nm 33 (57% PA, 30% WP, 13% WV)
20	<u>1010200</u>	Zegna Baruffa: Mousse, Nm 14 (70% WV, 30% PA) Millefili (Bluring): Mastev, Nm 33 (57% PA, 30% WP, 13% WV) Botto Poala: Breton, Nm 36/2 (100% WV)
21	<u>1010122</u>	Knoll Yarns: Soft Donegal, Nm 3,8/1 (100% WV) Filpucci: Point, Nm 15/1 (65% WV, 20% PA, 10% WA, 5% VI)
22	<u>0910622</u>	Zegna Baruffa: Millennium SWE, Nm 60/2 (100% WV) Millefili (Bluring): Mastev, Nm 33 (57% PA, 30% WP, 13% WV) Filpucci: Point, Nm 15/1 (65% WV, 20% PA, 10% WA, 5% VI)
23	<u>0910608</u>	Filpucci: Point, Nm 15/1 (65% WV, 20% PA, 10% WA, 5% VI) Knoll Yarns: Soft Donegal, Nm 3,8/1 (100% WV)
24	<u>1010010</u>	Knoll Yarns: Soft Donegal, Nm 3,8/1 (100% WV) Filpucci: Point, Nm 15/1 (65% WV, 20% PA, 10% WA, 5% VI) Botto Poala: Breton, Nm 36/2 (100% WV)
25	<u>0910628</u>	Zegna Baruffa: Millennium SWE, Nm 60/2 (100% WV) Millefili (Bluring): Mastev, Nm 33 (57% PA, 30% WP, 13% WV)
26	<u>0910611</u>	Zegna Baruffa: Millennium SWE, Nm 60/2 (100% WV) Zegna Baruffa: Mousse, Nm 14 (70% WV, 30% PA) Botto Poala: Breton, Nm 36/2 (100% WV) Filpucci: Point, Nm 15/1 (65% WV, 20% PA, 10% WA, 5% VI)
27	<u>1010195</u>	Millefili (Bluring): Mastev, Nm 33 (57% PA, 30% WP, 13% WV) Botto Poala: Breton, Nm 36/2 (100% WV) Zegna Baruffa: Millennium SWE, Nm 60/2 (100% WV)
28	<u>0910612</u>	Knoll Yarns: Soft Donegal, Nm 3,8/1 (100% WV) Filpucci: Point, Nm 15/1 (65% WV, 20% PA, 10% WA, 5% VI)
29	<u>1010204</u>	Zegna Baruffa: Mousse, Nm 14 (70% WV, 30% PA) Botto Poala: Breton, Nm 36/2 (100% WV) Millefili (Bluring): Mastev, Nm 33 (57% PA, 30% WP, 13% WV)

P. No. YARN DETAILS

30	<u>1010164</u>	Millefili (Blurring): Mastev, Nm 33 (57% PA, 30% WP, 13% WV) Botto Poala: Breton, Nm 36/2 (100% WV)
31	<u>1010209</u>	Zegna Baruffa: Mousse, Nm 14 (70% WV, 30% PA) Millefili (Blurring): Mastev, Nm 33 (57% PA, 30% WP, 13% WV) Botto Poala: Breton, Nm 36/2 (100% WV)
32	<u>1010176</u>	Zegna Baruffa: Mousse, Nm 14 (70% WV, 30% PA) Zegna Baruffa: Millennium SWE, Nm 60/2 (100% WV) Botto Poala: Breton, Nm 36/2 (100% WV)
33	<u>1010210</u>	Zegna Baruffa: Mousse, Nm 14 (70% WV, 30% PA) Millefili (Blurring): Mastev, Nm 33 (57% PA, 30% WP, 13% WV) Botto Poala: Breton, Nm 36/2 (100% WV)
33	<u>1010211</u>	Zegna Baruffa: Mousse, Nm 14 (70% WV, 30% PA) Millefili (Blurring): Mastev, Nm 33 (57% PA, 30% WP, 13% WV) Botto Poala: Breton, Nm 36/2 (100% WV)
33	<u>1010194</u>	Zegna Baruffa: Mousse, Nm 14 (70% WV, 30% PA)
34	<u>1010212</u>	Zegna Baruffa: Mousse, Nm 14 (70% WV, 30% PA) Knoll Yarns: Soft Donegal, Nm 3,8/1 (100% WV)
35	<u>1010169</u>	Knoll Yarns: Soft Donegal, Nm 3,8/1 (100% WV) Millefili (Blurring): Mastev, Nm 33 (57% PA, 30% WP, 13% WV) Botto Poala: Breton, Nm 36/2 (100% WV)
36	<u>1010147</u>	Botto Poala: Breton, Nm 36/2 (100% WV) Knoll Yarns: Soft Donegal, Nm 3,8/1 (100% WV) Millefili (Blurring): Mastev, Nm 33 (57% PA, 30% WP, 13% WV) Zegna Baruffa: Millennium SWE, Nm 60/2 (100% WV)
37	<u>1010201</u>	Zegna Baruffa: Mousse, Nm 14 (70% WV, 30% PA) Filpucci: Point, Nm 15/1 (65% WV, 20% PA, 10% WA, 5% VI) Botto Poala: Breton, Nm 36/2 (100% WV) Millefili (Blurring): Mastev, Nm 33 (57% PA, 30% WP, 13% WV)
38	<u>1010206</u>	Botto Poala: Breton, Nm 36/2 (100% WV) Zegna Baruffa: Mousse, Nm 14 (70% WV, 30% PA) Zegna Baruffa: Millennium SWE, Nm 60/2 (100% WV) Millefili (Blurring): Mastev, Nm 33 (57% PA, 30% WP, 13% WV)
39	<u>1010143</u>	Zegna Baruffa: Millennium SWE, Nm 60/2 (100% WV) Botto Poala: Breton, Nm 36/2 (100% WV) Millefili (Blurring): Mastev, Nm 33 (57% PA, 30% WP, 13% WV) Filpucci: Point, Nm 15/1 (65% WV, 20% PA, 10% WA, 5% VI)
39	<u>0910620</u>	Botto Poala: Breton, Nm 36/2 (100% WV)
40	<u>1010185</u>	Knoll Yarns: Soft Donegal, Nm 3,8/1 (100% WV)
41	<u>1010214</u>	Knoll Yarns: Soft Donegal, Nm 3,8/1 (100% WV) Zegna Baruffa: Mousse, Nm 14 (70% WV, 30% PA) Botto Poala: Breton, Nm 36/2 (100% WV)
42	<u>0910615</u>	Botto Poala: Breton, Nm 36/2 (100% WV)
42	<u>0910627</u>	Botto Poala: Breton, Nm 36/2 (100% WV)
43	<u>0910624</u>	Zegna Baruffa: Millennium SWE, Nm 60/2 (100% WV) Millefili (Blurring): Mastev, Nm 33 (57% PA, 30% WP, 13% WV) Zegna Baruffa: Mousse, Nm 14 (70% WV, 30% PA)
44	<u>1010187</u>	Zegna Baruffa: Mousse, Nm 14 (70% WV, 30% PA) Botto Poala: Breton, Nm 36/2 (100% WV) Knoll Yarns: Soft Donegal, Nm 3,8/1 (100% WV) Filpucci: Point, Nm 15/1 (65% WV, 20% PA, 10% WA, 5% VI)
45	<u>1010124</u>	Filpucci: Point, Nm 15/1 (65% WV, 20% PA, 10% WA, 5% VI) Zegna Baruffa: Mousse, Nm 14 (70% WV, 30% PA)
46	<u>0910619</u>	Botto Poala: Breton, Nm 36/2 (100% WV) Millefili (Blurring): Mastev, Nm 33 (57% PA, 30% WP, 13% WV)
47	<u>0910626</u>	Zegna Baruffa: Millennium SWE, Nm 60/2 (100% WV)
49	<u>1010178</u>	Albany (A.F.T.): Endurance, Nm 30/2 (80% WV, 20% PA)
49	<u>1010182</u>	Albany (A.F.T.): Endurance, Nm 30/2 (80% WV, 20% PA) Albany (A.F.T.): Aer8, Nm 30/2 (50% PES, 50% PVA)
50	<u>1010180</u>	Albany (A.F.T.): Endurance, Nm 30/2 (80% WV, 20% PA) Albany (A.F.T.): Aer8, Nm 10/2 (100% PP)
50	<u>1010179</u>	Albany (A.F.T.): Endurance, Nm 30/2 (80% WV, 20% PA)
51	<u>1010181</u>	Albany (A.F.T.): Endurance, Nm 30/2 (80% WV, 20% PA)

ADDRESSES

YARN MANUFACTURER AW 2011 / 2012

BOTTO POALA S.P.A.

Via Cesone, 13 - 13853 Lessona (BI) - Italy

T +39 0159848411 / F +39 0159848481

bottopoala@bottopoala.com / www.bottopoala.it

FILPUCCI S.P.A.

Via Dei Tigli, 41 - 50010 Capalle (FI) - Italy

T +39 05589871 / F +39 0558969382

filpucci@filpucci.it / www.filpucci.it

KNOLL YARNS LIMITED

1 Wells Road, Ilkley - West Yorkshire LS29 9JB - UK

T +44 (0)1943602516 / F +44 (0)1943816371

info@knollyarns.com / www.knollyarns.com

MILLEFILI S.P.A.

Via Carlo Marx, 35-37 - 41012 Carpi (MO) - Italy

T +39 0596222711 / F +39 059640180

millefili@millefili.it / www.millefili.it

ZEGNA BARUFFA - LANE BORGOSIESA S.P.A.

Via Milano, 160 - 13856 Vigliano Biellese (BI) - Italy

T +39 0157001 / F +39 015700252

baruffa@baruffa.com / www.baruffa.com

W. ZIMMERMANN GMBH & CO. KG

Riederstraße 7 - 88171 Weiler-Simmerberg - Germany

T +49 (0)838792120 / F +49 (0)8387921242

info@zimsi.com / www.zimmermann-garne.de

BITZER+SINGLE GMBH

Kohlplattenstraße 5 - 72459 Albstadt-Lautlingen - Germany

T +49 (0)743195800 / F +49 (0)7431958088

info@bitzer-single.de / www.bitzer-single.de

LOMBARDI & GRÜNBAUER GMBH

Markwiesenstraße 3 - 72770 Reutlingen - Germany

T +49 (0)712191150 / F +49 (0)7121911550

STOLL HEADQUARTER

GERMANY

H. Stoll GmbH & Co. KG
Stollweg 1 - 72760 Reutlingen
T +49 (0)71213130 / F +49 (0)7121313110
contact@stoll.com / www.stoll.com

STOLL FASHION & TECHNOLOGY

STOLL FASHION & TECHNOLOGY GERMANY

H. Stoll GmbH & Co. KG
Stollweg 1 - 72760 Reutlingen
T +49 (0)71213130 / F +49 (0)7121313426
contact@stoll.com / www.stoll.com

STOLL FASHION & TECHNOLOGY INTERNATIONAL CENTER

Building 2, No. 800, Shenfu Road
Xin Zhuang Industrial Park
Shanghai - China 201108
T +86 2154428188 / F +86 2154427117
stollshanghai@stoll.com.cn / www.stoll.com.cn

STOLL FASHION & TECHNOLOGY CENTER NEW YORK

250 West 39th Street (Ground Floor)
New York - NY 10018
T +1 2123983869 / F +1 2129217639
info@stollftny.com / www.stollftny.com

STOLL BRANCHES & AGENCIES

FRANCE

Stoll France
85-87, Avenue Henri Barbusse - 92140 Clamart
T +33 141088383 / F +33 141088500
stollfrance@wanadoo.fr

ITALY

Stoll Italia srl
Via Dei Maniscalchi 9/A - 41012 Carpi (MO)
T +39 059651899 / F +39 059651870
stollitalia@stoll.it

USA - CANADA

Stoll America Knitting Machinery, Inc.
250 West 39th Street (Ground Floor)
New York - NY 10018
T +1 2123983869 / F +1 2129217639
info@stollftny.com

JAPAN

Stoll Japan Co. Ltd.
Aquacity Shibaura - 4-16-23 Shibaura
Minato-Ku - Tokyo 108-0023 - Japan
T +81 337693690 / F +81 337693694
info@stolljapan.jp

INDIA

Stoll India Pvt. Ltd.
C-25 - Sector 63
201301 Noida - Uttar Pradesh
T +91 1204690850 / F +91 1204690851
contact@stoll-india.com

CHINA - HONGKONG

TAIWAN - THAILAND - VIETNAM
Chemtax (Stoll) Company Limited
6/F., Goldsland Building
22-26 Minden Avenue - Tsim Sha Tsui - Kowloon
Hong Kong
T +852 23686269 / F +852 23687500
stoll@chemtax.com



Historical view of the STOLL factory in Reutlingen, around the year 1900

STOLL

www.stoll.com