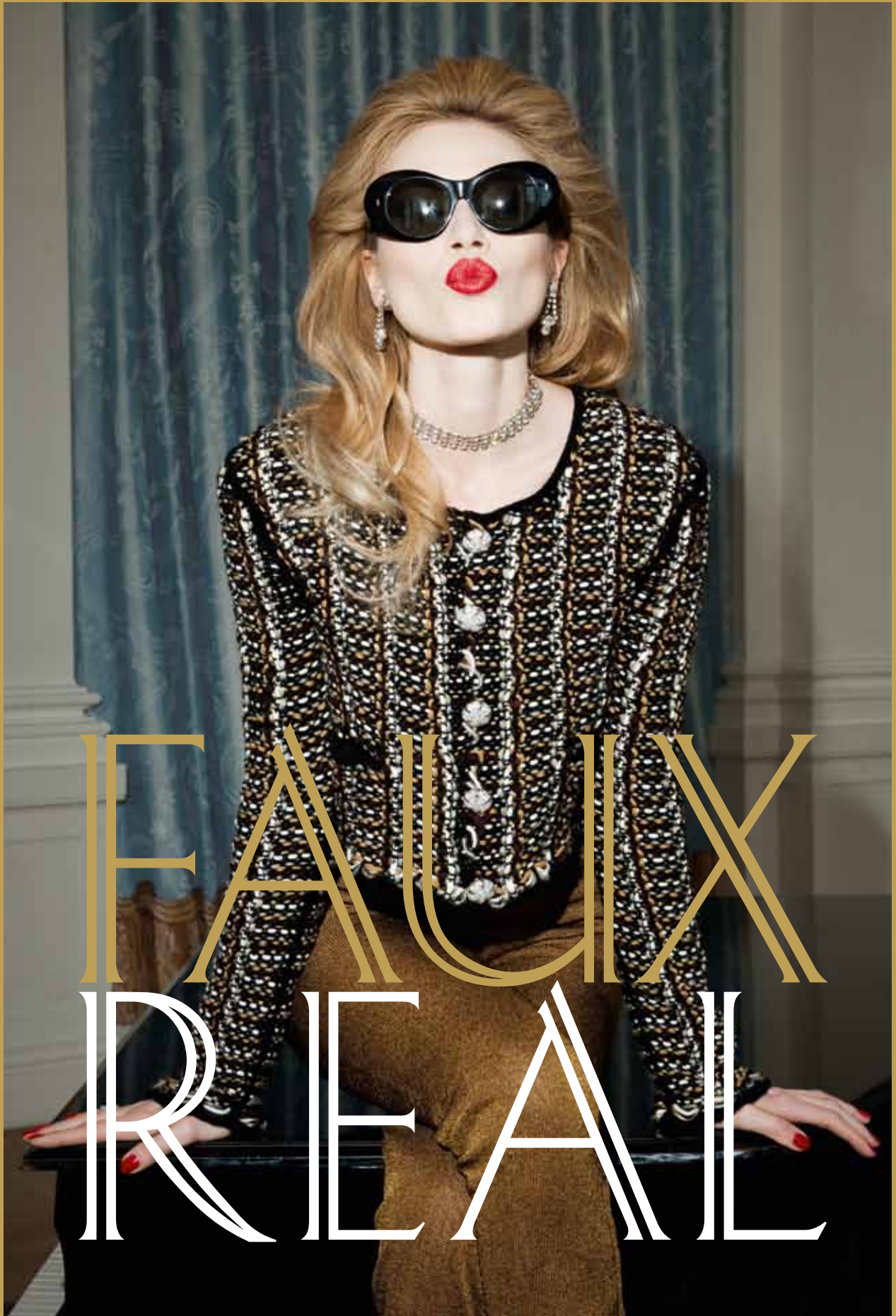


TREND COLLECTION  
A/W 2012/13



FAUX  
REAL

STOLL



TREND COLLECTION  
A/W 2012/13

STOLL

# INSPIRATION

# “ILLUSION IS THE FIRST OF ALL PLEASURES”

(OSCAR WILDE)



We took much pleasure in creating this illusion: using traditional weaving patterns morphed into knitwear by means of versatile knitting machine technology.

## *What’s Faux, What’s Real?*

We have recently identified a myriad of optical replications in fashion as a trend for the coming season:

printed coarse gauge stitch optics on fine gauge jerseys, Fair Isle and jacquard-knit optics on woven textiles. While this trend manifests itself in imitating knitted optics through printing on woven fabrics, Stoll Fashion & Technology department has done the opposite by simulating traditional weaving structures with knitting technology such as: velvet, cord velvet, herringbone fabric, pinstripes, gabardine (twill), bouclé, tweed, hounds tooth check, glen check, jacquard, honeycomb pique and voile, to name just a few.

As a result, we created a tailored collection with slim fitted silhouettes whilst maintaining the comfort which knits have to offer: shaping attributes by Fully Fashion knitting and comfortable fit by inherent elasticity. The collection deliberately implies a touch of glamour and haute couture – a field that is traditionally dominated by woven fabric.

On the technical side, we have achieved this effect using float structures, inserted weft threads, jacquards and racking patterns. The combination of chenille yarns, tapes, flammé and mohair yarns, shiny yarns and silk results in an intriguing illusion of woven fabrics.

The collection was photographed in a late 18th century palace with luxurious restored Trompe-l’œil architecture and decoration with faux curtains painted on the walls: the perfect location for a noble yet surreal collection.

We have enjoyed exploring the capabilities of our technology when it comes to immitate weaving with knitting machines.

We hope you will share our fascination with these amazing results!

# REBEL

EDITORIAL DEPARTMENT – STOLL FASHION & TECHNOLOGY  
ART DIRECTION – SSAW STUDIO  
PHOTOGRAPHY – RAFAEL KROETZ  
HAIR & MAKE UP – RAHEL TAEUBERT, VIKTORIA HOF  
MODELS – MARGARITA LAZO (MUNICH MODELS)  
MARC M. (BRODY BOOKINGS)

1110098  
CMS 830 C · E 2,5.2

short Fully Fashion tweed look jacket in 7-colour  
float jacquard transfer structure with holding  
stitches and integrated pocket





1110140

CMS 822 HP MULTI GAUGE · E 7.2

asymmetrical cut & sew dress in float jacquard  
transfer structure, hem and cuffs in 2-colour  
transfer structure





**1110152**

CMS 740 · E 7.2 body part  
CMS 530 HP · E 18 insert

—  
cut & sew cardigan, body part made up across the knitting direction in 2-colour jacquard structure with birdseye back, body shaped by goring and knitted tucks, shawl collar insert in 3-colour cross-tubular transfer structure with cloqué effect

**1110147**

CMS 822 HP MULTI GAUGE · E 8.2

—  
cut & sew skirt in 2-colour jacquard structure with birdseye back and linked on double tubular waistband

**1110150**

CMS 822 HP MULTI GAUGE · E 8.2

—  
Fully Fashion leggings in pointelle structure



0710533  
CMS 530 · E 18

Fully Fashion bow tie in cross tubular jacquard



**1110090** · CMS 530 HP · E 8.2

Fully Fashion blazer in herringbone design made by 3-colour double jersey tubular float transfer structure with knitted on lapel collar

**1110085** · CMS 822 · E 7.2

Fully Fashion trousers made up across the knitting direction with pinstripes in twill structure with knitted on side pockets



**1110145** — CMS 740 KNIT&WEAR · E 7.2  
Stoll-knit and wear<sup>®</sup> dress, gathering made by goring and PTS (Power Tension Setting)

**1110150** — CMS 822 HP MULTI GAUGE · E 8.2  
Fully Fashion leggings in pointelle structure

**110047**

CMS 530 HP MULTI GAUGE · E 3,5.2

—  
double-breasted tweed look jacket in 3-colour float  
jacquard transfer structure, lapel faced up with  
velvet






**1110047** — CMS 530 HP MULTI GAUGE · E 3.5.2  
double-breasted tweed look jacket in 3-colour float jacquard transfer structure, lapel faced up with velvet

**1110158** — CMS 740 KNIT&WEAR · E 9.2  
Stoll-knit and wear® turtleneck top in striped jersey interlock structure in piqué optic

**1110065** — CMS 822 HP MULTI GAUGE · E 8.2  
Fully Fashion trousers in 2-colour jacquard structure with birdseye back and linked on waistband







**1110048**  
CMS 822 HP · E 7.2

Fully Fashion blazer in cord optic with hounds  
tooth check pattern in 2-colour float jacquard  
transfer structure

**1110158**  
CMS 740 KNIT&WEAR · E 9.2

Stoll-knit and wear®  
turtleneck top in striped jersey interlock structure  
in piqué optic

**1110159**  
CMS 740 KNIT&WEAR · E 9.2

Stoll-knit and wear®  
leggings in striped jersey interlock structure with  
rib structure insert





**1110087**

CMS 822 HP KNIT&WEAR · E 7.2

Tartan poncho in 3-colour jacquard transfer structure

**1110066**

CMS 502 HP MULTI GAUGE · E 3,5.2

short Fully Fashion jersey turtleneck pullover with French shoulder

**1110065**

CMS 822 HP MULTI GAUGE · E 8.2

Fully Fashion trousers in 2-colour jacquard structure with birdseye back and linked on waistband

**1110153**  
CMS 740 · E 7.2

Fully Fashion dress in 2-colour jersey mesh structure with cascading neckline, skirt part in 2-colour jacquard structure with birdseye back and by gore technique shaped asymmetrical hem

**1110150**  
CMS 822 HP MULTI GAUGE · E 8.2

Fully Fashion leggings in pointelle structure







1110103  
CMS 530 HP · E 18

—  
cut & sew blazer in 2-colour relief jacquard



1110141 — CMS 730 T · E 7.2  
cut & sew coat with float transfer structure in chevron optic





1110154

CMS 822 HP MULTI GAUGE · E 2,5,2

Fully Fashion cardigan in 4-colour float jacquard with goring and linked on 2-colour fringe trimming, back with knitted on fringes

1110159

CMS 740 KNIT&WEAR · E 9,2

Stoll-knit and wear® leggings in striped jersey interlock structure with rib structure insert





1110141 · CMS 730 T · E 7.2

—  
cut & sew coat with float transfer structure in  
chevron optic

**1110146**

CMS 822 HP MULTI GAUGE

E 7.2 body part

CMS 822 HP MULTI GAUGE

E 8.2 inserts

---

cut and sew cardigan in float jacquard transfer structure with linked on yoke and cuffs in 2-colour jacquard structure with birdseye back

**1110148**

CMS 822 HP MULTI GAUGE

E 7.2 body part

CMS 822 HP MULTI GAUGE

E 8.2 inserts

---

cut and sew top in float jacquard transfer structure with patched on 2-colour jacquard structure inserts





**1110147**

CMS 822 HP MULTI GAUGE · E 8.2

—  
cut & sew skirt in 2-colour jacquard structure with  
birdseye back

**1110150**

CMS 822 HP MULTI GAUGE · E 8.2

—  
Fully Fashion leggings in pointelle structure

**1110157** — CMS 822 HP MULTI GAUGE · E 2,5.2

cape made up across the knitting direction in float structure with intarsia stripes and knitted on button loops, shaped by goring

**1110138** — CMS 740 KNIT&WEAR · E 9.2

asymmetrical Stoll-knit and wear<sup>®</sup> pullover made up across the knitting direction in striped jersey interlock structure and linked on turtleneck collar, hem in purl structure

**1110159** — CMS 740 KNIT&WEAR · E 9.2

Stoll-knit and wear<sup>®</sup> leggings in striped jersey interlock structure with rib structure insert





**1010454**

CMS 530 HP MULTI GAUGE · E 3,5.2

Stoll-applications®

Fully Fashion blazer in 1x1 technique with saddle shoulder, 2-colour float jacquard in woven optic, knitted on lapel collar, tubular button panel with fancy stitch edges and patch pocket

**1110158**

CMS 740 KNIT&WEAR · E 9.2

Stoll-knit and wear®

turtleneck top in striped jersey interlock structure in piqué optic

**1110065**

CMS 822 HP MULTI GAUGE · E 8.2

Fully Fashion trousers in 2-colour jacquard structure with birdseye back and linked on waistband





**1110097** — CMS 822 HP · E 8.2

Fully Fashion waistcoat in cross tubular structure with float inlay and structured stripe bordure

**1110085** — CMS 822 · E 7.2

Fully Fashion trousers made up across the knitting direction with pinstripes in twill structure with knitted on side pockets



**1110155**

CMS 822 HP MULTI GAUGE · E 5.2

coat in bouclé optic made by 4-colour float  
jacquard transfer structure with Fully Fashion  
sleeves, body in cut & sew with knitted on  
holded fringes and jersey insert





**110034** — CMS 822 HP KNIT&WEAR · E 7.2

Fully Fashion dress in cord velvet optic in 3-colour float jacquard transfer structure with lateral intarsia edges, top part and sleeves made up in real velvet



**1110155**

CMS 822 HP MULTI GAUGE · E 5.2

coat in bouclé optic made by 4-colour float jacquard transfer structure with Fully Fashion sleeves, body in cut & sew with knitted on holded fringes and jersey insert

**1110147**

CMS 822 HP MULTI GAUGE · E 8.2

cut & sew skirt in 2-colour jacquard structure with birdseye back



**1110105** — CMS 530 HP MULTI GAUGE · E 7.2  
cut & sew blazer in 2-colour float structure in cord velvet optic with patched on real velvet pockets and collar

**1110085** — CMS 822 · E 7.2  
Fully Fashion trousers made up across the knitting direction with pinstripes in twill structure with knitted on side pockets

**0810038** — CMS 530 · E 7.2  
Stoll-knit and wear<sup>®</sup> tie with horizontal stripes and goring on the tip







**1110149**

CMS 822 HP MULTI GAUGE · E 8.2

—  
cut & sew dress in 2-colour jacquard structure with birdseye back, wave structure bordure with racking and needle set out, intarsia insert and Fully Fashion sleeves in pointelle structure, skirt part with asymmetrical shaping

**1110143** — CMS 822 HP MULTI GAUGE · E 2,5.2  
coat with Fully Fashion fringe sleeves, body knitted in one panel with intarsia and float transition, fringes in the front are knitted on,  
body part made up across the knitting direction, sleeve holes are cut out

**1110159** — CMS 740 KNIT&WEAR · E 9.2  
Stoll-knit and wear® leggings in striped jersey interlock structure with rib structure insert





**1110143** — CMS 822 HP MULTI GAUGE · E 2,5.2  
coat with Fully Fashion fringe sleeves, body knitted in one panel with intarsia and float transition, fringes in the front are knitted on,  
body part made up across the knitting direction, sleeve holes are cut out



1110144

CMS 822 HP MULTI GAUGE · E 5.2

Fully Fashion cardigan in wave structure with needle set out and racking, button loops are knitted on, collar in float structure with open waves



**1110142** — CMS 822 HP MULTI GAUGE · E 2,5.2

Fully Fashion cardigan in 2-colour birdseye jacquard, knitted on fringes and button holes, linked on patch pockets, sleeves in course knit with 2x8 cables

**1110159** — CMS 740 KNIT&WEAR · E 9.2

Stoll-knit and wear® leggings in striped jersey interlock structure with rib structure insert

**1110142**  
CMS 822 HP MULTI GAUGE · E 2,5,2

Fully Fashion cardigan in 2-colour birdseye jacquard, knitted on fringes and button holes, linked on patch pockets, sleeves in course knit with 2x8 cables









**1110060**

CMS 530 HP MULTI GAUGE · E 7.2

Fully Fashion V-neck slipover with French shoulder  
and 2-colour jersey transfer structure with floats

**0710533**

CMS 530 · E 18

Fully Fashion bow tie in cross tubular jacquard



**1110058** · CMS 830 C · E 2,5.2

Fully Fashion coat in 2-colour float jacquard with knitted on loops and linked on 2-colour fake plush trimming, body knitted in one piece

**1110065** · CMS 822 HP MULTI GAUGE · E 8.2

Fully Fashion trousers in 2-colour jacquard structure with birdseye back and linked on waistband

**1110156** — CMS 822 HP MULTI GAUGE · E 5.2  
Fully Fashion tweed look cardigan in 4-colour float jacquard transfer structure with knitted on intarsia fringes

**1110145** — CMS 740 KNIT&WEAR · E 7.2  
Stoll-knit and wear<sup>®</sup> dress, gathering made by goring and PTS (Power Tension Setting)

**1110150** — CMS 822 HP MULTI GAUGE · E 8.2  
Fully Fashion leggings in pointelle structure



# PREVIEW

---

SHANGHAITEX & ITMA BARCELONA 2011



**CMS 502 HP MULTI GAUGE**  
E 3,5.2 · E 6.2



**CMS 530 HP**  
E 16 · E 18



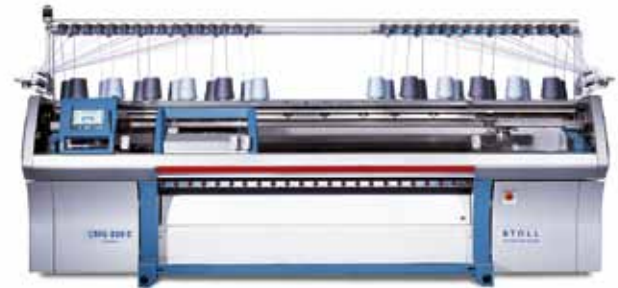
**CMS 520 C**  
E 3



**CMS 530 HP MULTI GAUGE**  
E 2,5.2 · E 7.2 · E 3,5.2



**CMS 822 HP MULTI GAUGE**  
E 7.2



**CMS 830 C KNIT&WEAR**  
E 2,5.2



**1110046** · CMS 822 HP MULTI GAUGE · E 7.2  
 Stoll-multi gauges®  
 Tartan intarsia dress with 18 (20) intarsia yarn carriers and transfer structure on jersey, knitted in one piece with three different gauge optics  
*Knitting Time: 1 piece: 32:00 min – 0,8 m/s*



**1110093** · CMS 530 HP MULTI GAUGE · E 7.2  
 Stoll-multi gauges®  
 Fully Fashion halter-neck top with rhombic design in fine and coarse gauge with relief structure in Ajour optic, top part shaped by pleats  
*Knitting Time: 1 front piece: 8:44 min – 1,0 m/s*  
*1 back piece: 6:06 min – 1,0 m/s*



**1110078 (VARIATION 1)**  
 CMS 530 HP MULTI GAUGE · E 2,5.2 · M.4L  
 Stoll-multi gauges®  
 Fully Fashion skirt with initial row in manual work look, 2-colour float jacquard and cable structure with cast-off technique, narrowed waistband by stitch doubling,  
 with 4L needle, 4x Nm 30/2 Cashwool, 1x Nm 1,2 Ulisse  
*Knitting Time: 1 front piece: 7:50 min – 0,8 m/s*

**1110095 (VARIATION 2)**  
 CMS 530 HP MULTI GAUGE · E 2,5.2 · M.4L  
 Stoll-multi gauges®  
 with 4L needle, 4x Nm 30/2 Cashwool, 2x Nm 2,9 Airsoft  
*Knitting Time: 1 front piece: 6:30 min – 1,0 m/s*



**1110071 · CMS 530 HP · E 16**  
 Fully Fashion top with shoulder straps, intarsia jersey structure, shaped by plating with lycra  
*Knitting Time: 1 front piece: 20:48 min – 1,0 m/s*

**1110050 · CMS 530 HP · E 18**  
 skirt made up inside out in intarsia stripes with jersey interlock structure and racked and tucked pattern with 27 intarsia yarn carriers  
*Knitting Time: 1 front piece: 41:46 min – 0,8 m/s*





**1110043** · CMS 530 HP · E 16

Stoll-applications®

Fully Fashion dress with shoulder straps, frill applications at hem and hips, intarsia jersey structure, shaped by plating with lycra

*Knitting Time: 1 front piece: 30:20 min – 1,0 m/s*

*1 back piece: 35:11 min – 1,0 m/s*



**1110056** (VARIATION 1)

CMS 530 HP MULTI GAUGE · E 3,5.2 · M.4L

Stoll-multi gauges®

Fully Fashion skirt with initial row in manual work look, 2-colour float jacquard and cable structure with cast-off technique, narrowed waistband by stitch doubling,

with 4L needle, 3x Nm 30/2 Cashwool, 2x Nm 2,9 Airsoft

*Knitting Time: 1 front piece: 7:30 min – 0,8 m/s*

**1110096** (VARIATION 2)

CMS 530 HP MULTI GAUGE · E 3,5.2 · M.4L

Stoll-multi gauges®

with 4L needle, 3x Nm 30/2 Cashwool, 2x Nm 5 Soffstar

*Knitting Time: 1 front piece: 7:30 min – 1,0 m/s*



**1110089** · CMS 520C · E 3

Stoll-multi gauges®  
sleeveless Fully Fashion dress with Carmen neckline, skirt part in cast-off technique with pleats and bordure in float and pointelle structure

*Knitting Time: 1 front piece: 7:08 min – 0,8 m/s  
1 back piece: 6:50 min – 0,8 m/s*



**1110038** · CMS 502 HP MULTI GAUGE · E 3,5,2

Fully Fashion jersey pullover with French shoulder and 1x1 rib cuffs with stripes in float structure

*Knitting Time: 1 front piece: 4:11 min – 1,0 m/s  
1 back piece: 4:02 min – 1,0 m/s  
1 sleeve: 3:25 min – 1,0 m/s  
1 collar: 1:29 min – 1,0 m/s*



**1110044** · CMS 502 HP MULTI GAUGE · E 6.2  
 Stoll-applications®  
 Fully Fashion cardigan in chevron design with racked and tucked pattern, yarn and structure stripes in 1x1 rib and all needles like multi gauge  
*Knitting Time: 1 front piece: 5:00 min – 1,0 m/s*  
*1 back piece: 6:32 min – 1,0 m/s*  
*1 sleeve: 6:15 min – 1,0 m/s*



**1110036** · CMS 830 C KNIT&WEAR · E 2,5.2  
 Stoll-knit and wear®  
 jersey cap with border in float structure, turned inside out  
*Knitting Time for 2 pieces: 7:14 min – 1,0 m/s*

**1110037** · CMS 830 C KNIT&WEAR · E 2,5.2  
 striped scarf in jersey structure with cross stitches  
*Knitting Time for 2 pieces: 20:26 min – 1,0 m/s*

**1110035** · CMS 830 C KNIT&WEAR · E 2,5.2  
 Stoll-knit and wear®  
 leg warmers with stripes, alternating between 2-colour float jacquard and single-colour float structure, turned inside out  
*Knitting Time for 4 pieces: 18:43 min – 1,0 m/s*

# DETAILS

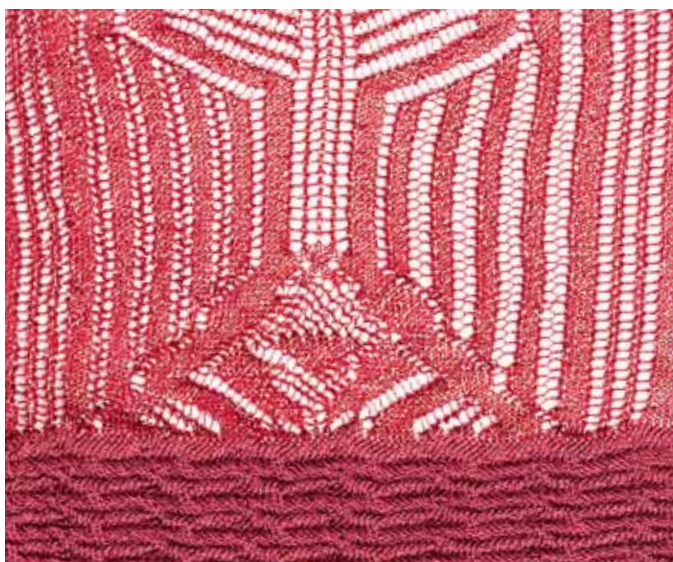
---



1110098 — P. 7



1110152 — P. 9



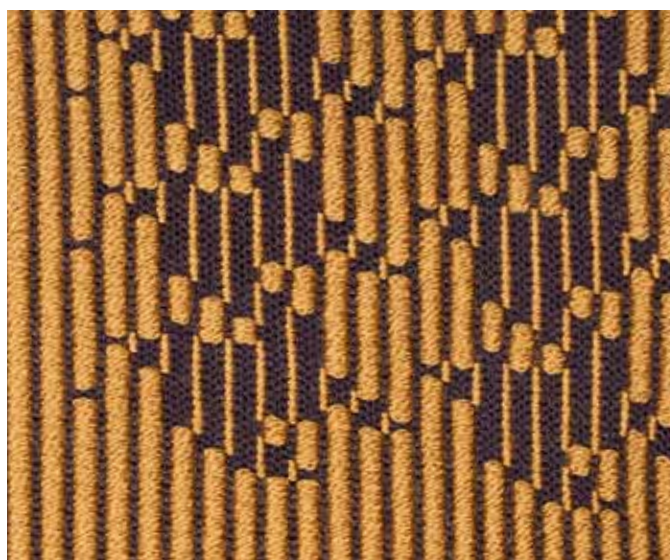
1110150 — P. 9, 12, 21, 28, 53



1110090 — P. 11



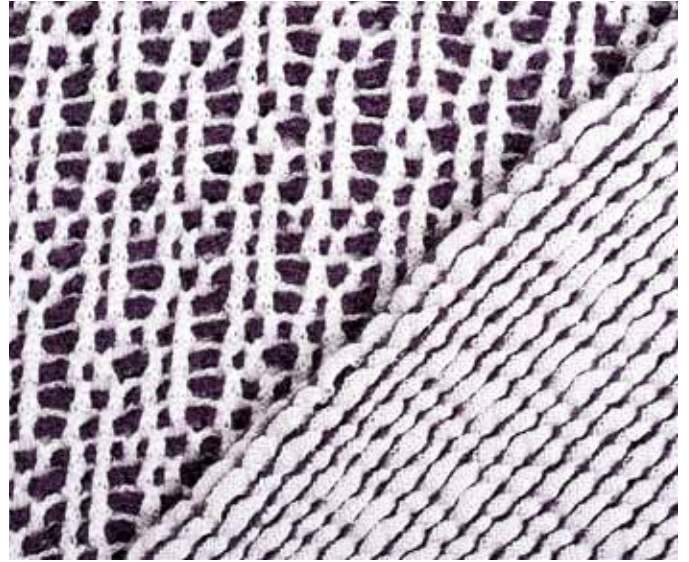
1110085 — P. 11, 33, 38



1110048 — P. 18



1110087 — P. 20



1110153 — P. 21



1110103 — P. 22



1110154 — P. 25



1110146 — P. 28

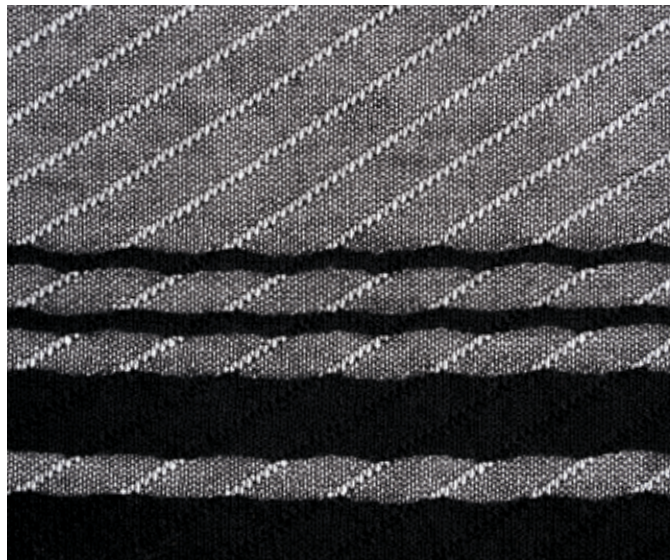


1110157 — P. 31

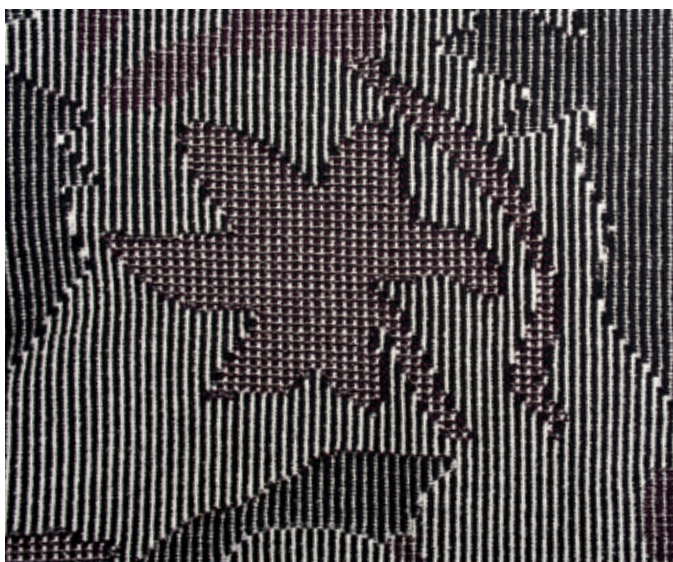
# DETAILS



1010454 — P. 32



1110097 — P. 33



1110034 — P. 36



1110105 — P. 38



1110144 — P. 46



1110142 — P. 47, 48



1110060 — P. 50



1110050 — P. 56



1110056 — P. 57



1110044 — P. 59



1110036 — P. 59



1110037 — P. 59

# DESIGN & DEVELOPMENT

---

## DESIGN BRIEF

### SCOPE

As Tartan patterns and glen checks became very popular recently our objective was to find a way to turn glen checks which are traditionally made of woven fabric into knits.

### REFLECTION ON APPROPRIATE KNITTING TECHNOLOGY

Focusing only on the optical/graphical aspect of the glen check we could have simply taken a jacquard technique.

But in this case we would have been forced to compromise on the structure, elasticity and certain shaping attributes. Jacquard knits tend to have a flat/even surface and they are tight and thus less stretchy and drapy. Applying shaping attributes in jacquard technique has tight limitations.

As a result we went to look at a combination of structure and intarsia. After researching and crossing over Stoll-multi gauges® techniques with intarsia features we identified novelty applications where MG plays a dominant role in respect of shape giving and stitch construction.

### DESIGN INNOVATION

After researching and trying different techniques the final decision was to knit 3 sections in different gauges (1+3+6) adjacent to each other (2) which determine the shape of a A-Line silhouette. We only knit one panel and link it on the back which saves on make-up costs, knitting and yarn wastage.

As MG applications are naturally also intarsia technique (4) we colored the checks with intarsia and structure fields. The base structure which consists of two colors was an ideal stitch construction to play with in respect of tonality and shades – changing structure implies here to also change shades (5).

### MATERIAL SELECTION

To enhance the woven aspect of the fabric and to meet the trend of knitting with metal glazed yarn, we decided to work with mohair and merino for a slight felting after washing. In order to contribute to the desired luxury look trend we plied up metal glazed filaments with other yarns on the same feeder.

**1110046** · CMS 822 HP MULTI GAUGE · E 7.2  
Stoll-multi gauges®

intarsia dress with 18 (20) intarsia yarn carriers OIFF and transfer structure on jersey, knitted in one piece with three different gauge optics

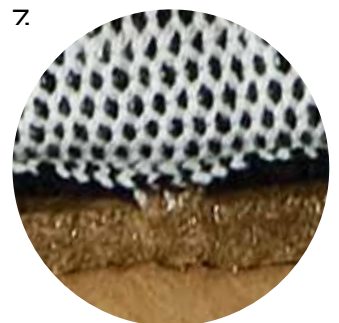
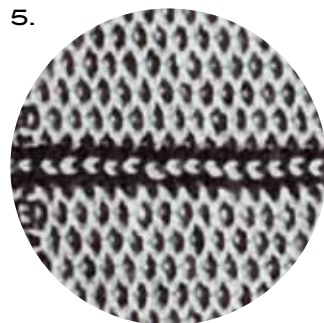
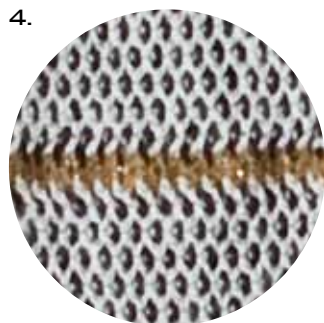
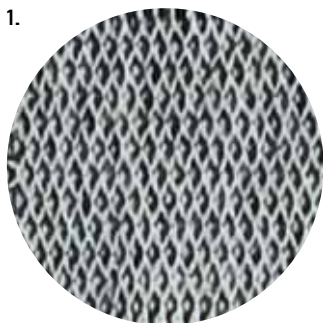
CMS 822 FULL PRODUCTION:

all yarn carriers are working within one stroke in three systems, the fourth system is transferring

*Knitting Time: 32:00 min – 0,8 m/s*



# TECHNICAL FEATURES



# YARN DETAILS

P.	N°	YARN DETAILS
7	1110098	Lineapiù: Giselle, Nm 24 (63% VI, 37% PA) Igea: Airsoft, Nm 2,9 (45% WV, 45% PES, 10% PC) Lanificio dell'Olivo: Medusa, Nm 1,4 (100% PES) BE.MI.VA.: Park, Nm 1,1 (76% CO, 24% PA) Sesia: Ulisse, Nm 1,2 (100% WV) Igea: Airsilver, Nm 6,2 (67% VI, 33% WV) BE.MI.VA.: Satin, Nm 2,4 (100% SE)
8	1110140	Lineapiù: Image, Nm 46 (80% VI, 20% PES) Lineapiù: Giselle, Nm 24 (63% VI, 37% PA)
9	1110152	Lineapiù: Giselle, Nm 24 (63% VI, 37% PA) Lineapiù: Image, Nm 46 (80% VI, 20% PES) Zegna Baruffa: Millennium, Nm 60/2 (100% WV)
	1110147	Sesia: Angel, Nm 120/2 x2 (100% SE) Lineapiù: Image, Nm 46 (80% VI, 20% PES)
	1110150	Lineapiù: Image, Nm 46 (80% VI, 20% PES)
11	1110090	Zegna Baruffa: Cashwool, Nm 30/2 (100% WV) Lineapiù: Noir, Nm 70 (82% CO, 18% PA)
	1110085	Zegna Baruffa: Cashwool, Nm 30/2 (100% WV) Sesia: Angel, Nm 120/2 x2 (100% SE) Lineapiù: Noir, Nm 70 (82% CO, 18% PA)
12	1110145	Lineapiù: Camelot, Nm 15 (58% WM, 32% PA, 10% WV)
	1110150	Lineapiù: Image, Nm 46 (80% VI, 20% PES)
17	1110047	Igea: Airsoft, Nm 2,9 (45% WV, 45% PES, 10% PC) Zegna Baruffa: Cashwool, Nm 30/2 (100% WV) Lanificio dell'Olivo: Medusa, Nm 1,4 (100% PES) Lineapiù: Image, Nm 46 (80% VI, 20% PES)
	1110158	Lineapiù: Giselle, Nm 24 (63% VI, 37% PA) Lineapiù: Image, Nm 46 (80% VI, 20% PES)
	1110065	Zegna Baruffa: Millennium, Nm 60/2 (100% WV) Lineapiù: Image, Nm 46 (80% VI, 20% PES)
18	1110048	Zegna Baruffa: Cashwool, Nm 30/2 (100% WV) Zegna Baruffa: Millennium, Nm 60/2 (100% WV)
	1110158	Lineapiù: Giselle, Nm 24 (63% VI, 37% PA) Lineapiù: Image, Nm 46 (80% VI, 20% PES)
	1110159	Lineapiù: Giselle, Nm 24 (63% VI, 37% PA) Lineapiù: Image, Nm 46 (80% VI, 20% PES)
20	1110087	Zegna Baruffa: Cashwool, Nm 30/2 (100% WV) Lineapiù: Image, Nm 46 (80% VI, 20% PES)
	1110066	Igea: Airsilver, Nm 6,2 (67% VI, 33% WV)
	1110065	Zegna Baruffa: Millennium, Nm 60/2 (100% WV) Lineapiù: Image, Nm 46 (80% VI, 20% PES)
21	1110153	Lineapiù: Giselle, Nm 24 (63% VI, 37% PA) Zegna Baruffa: Millennium, Nm 60/2 (100% WV)
	1110150	Lineapiù: Image, Nm 46 (80% VI, 20% PES)
22	1110103	Zegna Baruffa: Millennium, Nm 60/2 (100% WV) Lineapiù: Image, Nm 46 (80% VI, 20% PES)
24	1110141	Zegna Baruffa: Millennium, Nm 60/2 (100% WV)
25	1110154	Sesia: Ulisse, Nm 1,2 (100% WV) Igea: Airsoft, Nm 2,9 (45% WV, 45% PES, 10% PC) BE.MI.VA.: Park, Nm 2,3 (76% CO, 24% PA)
	1110159	Lineapiù: Giselle, Nm 24 (63% VI, 37% PA) Lineapiù: Image, Nm 46 (80% VI, 20% PES)
28	1110146	Sesia: Angel, Nm 120/2 x2 (100% SE) Lineapiù: Image, Nm 46 (80% VI, 20% PES)
	1110148	Sesia: Angel, Nm 120/2 x2 (100% SE) Lineapiù: Image, Nm 46 (80% VI, 20% PES)
	1110147	Sesia: Angel, Nm 120/2 x2 (100% SE) Lineapiù: Image, Nm 46 (80% VI, 20% PES)
	1110150	Lineapiù: Image, Nm 46 (80% VI, 20% PES)
31	1110157	Lineapiù: Camelot, Nm 15 (58% WM, 32% PA, 10% WV) Lineapiù: Giselle, Nm 24 (63% VI, 37% PA)
	1110138	Lineapiù: Giselle, Nm 24 (63% VI, 37% PA) Lineapiù: Image, Nm 46 (80% VI, 20% PES)
	1110159	Lineapiù: Noir, Nm 70 (82% CO, 18% PA) Lineapiù: Giselle, Nm 24 (63% VI, 37% PA) Lineapiù: Image, Nm 46 (80% VI, 20% PES)
32	1010454	Zegna Baruffa: Cashwool, Nm 30/2 (100% WV) Igea: Airsoft, Nm 2,9 (45% WV, 45% PES, 10% PC) Lanificio dell'Olivo: Medusa, Nm 1,4 (100% PES)
	1110158	Lineapiù: Giselle, Nm 24 (63% VI, 37% PA) Lineapiù: Image, Nm 46 (80% VI, 20% PES)
	1110065	Zegna Baruffa: Millennium, Nm 60/2 (100% WV) Lineapiù: Image, Nm 46 (80% VI, 20% PES)
33	1110097	Lineapiù: Noir, Nm 70 (82% CO, 18% PA) Zegna Baruffa: Cashwool, Nm 30/2 (100% WV)
	1110085	Zegna Baruffa: Cashwool, Nm 30/2 (100% WV) Sesia: Angel, Nm 120/2 x2 (100% SE) Lineapiù: Noir, Nm 70 (82% CO, 18% PA)
36	1110034	Zegna Baruffa: Cashwool, Nm 30/2 (100% WV) Lineapiù: Giselle, Nm 24 (63% VI, 37% PA) Lineapiù: Image, Nm 46 (80% VI, 20% PES) Zegna Baruffa: Millennium, Nm 60/2 (100% WV)

37	1110155	Zegna Baruffa: Millennium, Nm 60/2 (100% WV) Igea: Airsoft, Nm 2,9 (45% WV, 45% PES, 10% PC) Sesia: Ulisse, Nm 1,2 (100% WV) BE.MI.VA.: Park, Nm 2,3 (76% CO, 24% PA) Lineapiù: Giselle, Nm 24 (63% VI, 37% PA)	55	1110046	Zegna Baruffa: Cashwool, Nm 30/2 (100% WV) Lineapiù: Camelot, Nm 15 (58% WM, 32% PA, 10% WV) Lineapiù: Giselle, Nm 24 (63% VI, 37% PA) Lineapiù: Image, Nm 46 (80% VI, 20% PES) Zegna Baruffa: Millennium, Nm 60/2 (100% WV)
	1110147	Sesia: Angel, Nm 120/2 x2 (100% SE) Lineapiù: Image, Nm 46 (80% VI, 20% PES)	55	1110093	Zegna Baruffa: Cashwool, Nm 30/2 (100% WV)
38	1110105	Lineapiù: Giselle, Nm 24 (63% VI, 37% PA) Lineapiù: Noir, Nm 70 (82% CO, 18% PA)	56	1110078	Zegna Baruffa: Cashwool, Nm 30/2 (100% WV) Sesia: Ulisse, Nm 1,2 (100% WV)
	1110085	Zegna Baruffa: Cashwool, Nm 30/2 (100% WV) Sesia: Angel, Nm 120/2 x2 (100% SE) Lineapiù: Noir, Nm 70 (82% CO, 18% PA)		1110095	Zegna Baruffa: Cashwool, Nm 30/2 (100% WV) Igea: Airsoft, Nm 2,9 (45% WV, 45% PES, 10% PC)
40	1110149	Sesia: Angel, Nm 120/2 x2 (100% SE) Lineapiù: Image, Nm 46 (80% VI, 20% PES)	56	1110071	Lineapiù: Noir, Nm 70 (82% CO, 18% PA) Sesia: Angel, Nm 120/2 x2 (100% SE)
43	1110143	Sesia: Ulisse, Nm 1,2 (100% WV) Igea: Airsilver, Nm 6,2 (67% VI, 33% WV)		1110050	Lineapiù: Noir, Nm 70 (82% CO, 18% PA) Sesia: Angel, Nm 120/2 x2 (100% SE)
	1110159	Lineapiù: Giselle, Nm 24 (63% VI, 37% PA) Lineapiù: Image, Nm 46 (80% VI, 20% PES)	57	1110043	Lineapiù: Noir, Nm 70 (82% CO, 18% PA) Sesia: Angel, Nm 120/2 x2 (100% SE)
46	1110144	Lineapiù: Camelot, Nm 15 (58% WM, 32% PA, 10% WV) BE.MI.VA.: Satin, Nm 2,4 (100% SE) Lineapiù: Giselle, Nm 24 (63% VI, 37% PA)	57	1110056	Zegna Baruffa: Cashwool, Nm 30/2 (100% WV) Igea: Airsoft, Nm 2,9 (45% WV, 45% PES, 10% PC)
47	1110142	Lineapiù: Giselle, Nm 24 (63% VI, 37% PA) Igea: Airsoft, Nm 2,9 (45% WV, 45% PES, 10% PC)		1110096	Zegna Baruffa: Cashwool, Nm 30/2 (100% WV) Filpucci: Soffstar, Nm 5 (50 % WV, 50 % PA)
	1110159	Lineapiù: Giselle, Nm 24 (63% VI, 37% PA) Lineapiù: Image, Nm 46 (80% VI, 20% PES)	58	1110089	Igea: Airsoft, Nm 2,9 (45% WV, 45% PES, 10% PC)
50	1110060	Zegna Baruffa: Cashwool, Nm 30/2 (100% WV) Lineapiù: Noir, Nm 70 (82% CO, 18% PA) Zegna Baruffa: Millennium, Nm 60/2 (100% WV)	58	1110038	Igea: Airsilver, Nm 6,2 (67% VI, 33% WV) Igea: Airsoft, Nm 2,9 (45% WV, 45% PES, 10% PC)
51	1110058	Igea: Airsoft, Nm 2,9 (45% WV, 45% PES, 10% PC) BE.MI.VA.: Park, Nm 1,1 (76% CO, 24% PA) Lineapiù: Camelot, Nm 15 (58% WM, 32% PA, 10% WV) Lineapiù: Image, Nm 46 (80% VI, 20% PES)	59	1110044	Zegna Baruffa: Cashwool, Nm 30/2 (100% WV) Lineapiù: Camelot, Nm 15 (58% WM, 32% PA, 10% WV) Lineapiù: Image, Nm 46 (80% VI, 20% PES)
	1110065	Zegna Baruffa: Millennium, Nm 60/2 (100% WV) Lineapiù: Image, Nm 46 (80% VI, 20% PES)	59	1110035	BE.MI.VA.: Park, Nm 2,3 (76% CO, 24% PA) Igea: Airsoft, Nm 2,9 (45% WV, 45% PES, 10% PC)
53	1110156	Igea: Airsoft, Nm 2,9 (45% WV, 45% PES, 10% PC) Sesia: Ulisse, Nm 1,2 (100% WV) BE.MI.VA.: Park, Nm 2,3 (76% CO, 24% PA) Lineapiù: Giselle, Nm 24 (63% VI, 37% PA)		1110036	Igea: Airsoft, Nm 2,9 (45% WV, 45% PES, 10% PC)
	1110145	Lineapiù: Camelot, Nm 15 (58% WM, 32% PA, 10% WV)		1110037	BE.MI.VA.: Park, Nm 2,3 (76% CO, 24% PA) Igea: Airsoft, Nm 2,9 (45% WV, 45% PES, 10% PC)
	1110150	Lineapiù: Image, Nm 46 (80% VI, 20% PES)			

# ADDRESSES

---

## YARN MANUFACTURERS

### FILATI BE.MI.VA. S.P.A.

Via Mugellese 115 – 50010 Capalle (FI) – Italy  
T +39 055898261 / F +39 055898084  
bemiva@bemiva.it, www.bemiva.it

### IGEA S.P.A.

Via Pollative 119 – 59100 Prato (FI) – Italy  
T +39 05745181 / F +39 0574621749  
igea@igeayarn.it, www.igeayarn.it

### LANIFICIO DELL'OLIVO S.P.A.

Via F.Lli Cervi 84 – 50013 Capalle (FI) – Italy  
Tel. +39 055898641 / Fax +39 0558985814  
sales@lanificiodellolivo.it, www.lanificiodellolivo.it

### LINEAPIÙ ITALIA S.P.A.

Via Brunelleschi 6/F – 50013 Capalle (FI) – Italy  
Tel. +39 05589561 / Fax +39 0558956568  
gruppolineapiu@lineapiu.com, www.lineapiu.com

### MANIFATTURA SESIA S.R.L.

Via Tosalli 67/69 – 28073 Fara Novarese (NO) – Italy  
Tel. +39 0321819984 / Fax +39 0321819985  
sales@mansesia.it, www.mansesia.it

### W. ZIMMERMANN GMBH & CO. KG

Riederstraße 7 – 88171 Weiler-Simmerberg – Germany  
Tel. +49 (0)838792120 / Fax +49 (0)8387921242  
info@zimsi.com, www.zimmermann-garne.de

### ZEGNA BARUFFA – LANE BORGOSIESIA S.P.A.

Via Milano 160 – 13856 Vigliano Biellese (BI) – Italy  
Tel. +39 0157001 / Fax +39 015700252  
baruffa@baruffa.com, www.baruffa.com

### AMF S.P.A.

Via B. Sacchi 54-58 – 36061 Bassano del Grappa (VI) – Italy  
Tel. +39 04248808  
info@amfsnaps.com, www.amfsnaps.com

### BITZER+SINGLE GMBH

Kohlplattenstraße 5 – 72459 Albstadt-Lautlingen – Germany  
Tel. +49 (0)743195800 / Fax +49 (0)7431958088  
info@bitzer-single.de, www.bitzer-single.de

### GEWAND

Elisabeth Oechsle – Vogelsangstr. 31 – 70176 Stuttgart – Germany  
Tel. / Fax +49 (0)7116157842  
info@gewand-stuttgart.de, www.gewand-stuttgart.de

## STOLL HEADQUARTER

### GERMANY

H. Stoll GmbH & Co. KG  
Stollweg 1 – 72760 Reutlingen  
T +49 (0)71213130 / F +49 (0)7121313110  
contact@stoll.com, www.stoll.com

## STOLL FASHION & TECHNOLOGY

### STOLL FASHION & TECHNOLOGY GERMANY

H. Stoll GmbH & Co. KG  
Stollweg 1 – 72760 Reutlingen  
T +49 (0)71213130 / F +49 (0)7121313426  
contact@stoll.com, www.stoll.com

### STOLL FASHION & TECHNOLOGY INTERNATIONAL CENTER

Building 2, No. 800, Shenfu Road  
Xin Zhuang Industrial Park  
Shanghai – China 201108  
T +86 2154428188 / F +86 2154427117  
stollshanghai@stoll.com.cn, www.stoll.com.cn

### STOLL FASHION & TECHNOLOGY CENTER NEW YORK

250 West 39th Street (Ground Floor)  
New York – NY 10018  
T +1 2123983869 / F +1 2129217639  
info@stollfny.com, www.stollfny.com

## STOLL BRANCHES & AGENCIES

### FRANCE

Stoll France  
85-87, Avenue Henri Barbusse – 92140 Clamart  
T +33 141088383 / F +33 141088500  
stollfrance@wanadoo.fr

### ITALY

Stoll Italia srl  
Via Dei Maniscalchi 9/A – 41012 Carpi (MO)  
T +39 059651899 / F +39 059651870  
stollitalia@stoll.it

### USA – CANADA

Stoll America Knitting Machinery, Inc.  
250 West 39th Street (Ground Floor)  
New York – NY 10018  
T +1 2123983869 / F +1 2129217639  
info@stollfny.com

### JAPAN

Stoll Japan Co. Ltd.  
Aquacity Shibaura – 4-16-23 Shibaura  
Minato-Ku – Tokyo 108-0023 – Japan  
T +81 337693690 / F +81 337693694  
info@stolljapan.jp

### INDIA

Stoll India Pvt. Ltd.  
C-25 – Sector 63  
201301 Noida – Uttar Pradesh  
T +91 1204690850 / F +91 1204690851  
contact@stoll-india.com

### CHINA – HONGKONG

TAIWAN – THAILAND – VIETNAM  
Chemtax (Stoll) Company Limited  
6/F., Goldsland Building  
22-26 Minden Avenue – Tsim Sha Tsui – Kowloon  
Hong Kong  
T +852 23686269 / F +852 23687500  
stoll@chemtax.com







**STOLL**

[www.stoll.com](http://www.stoll.com)